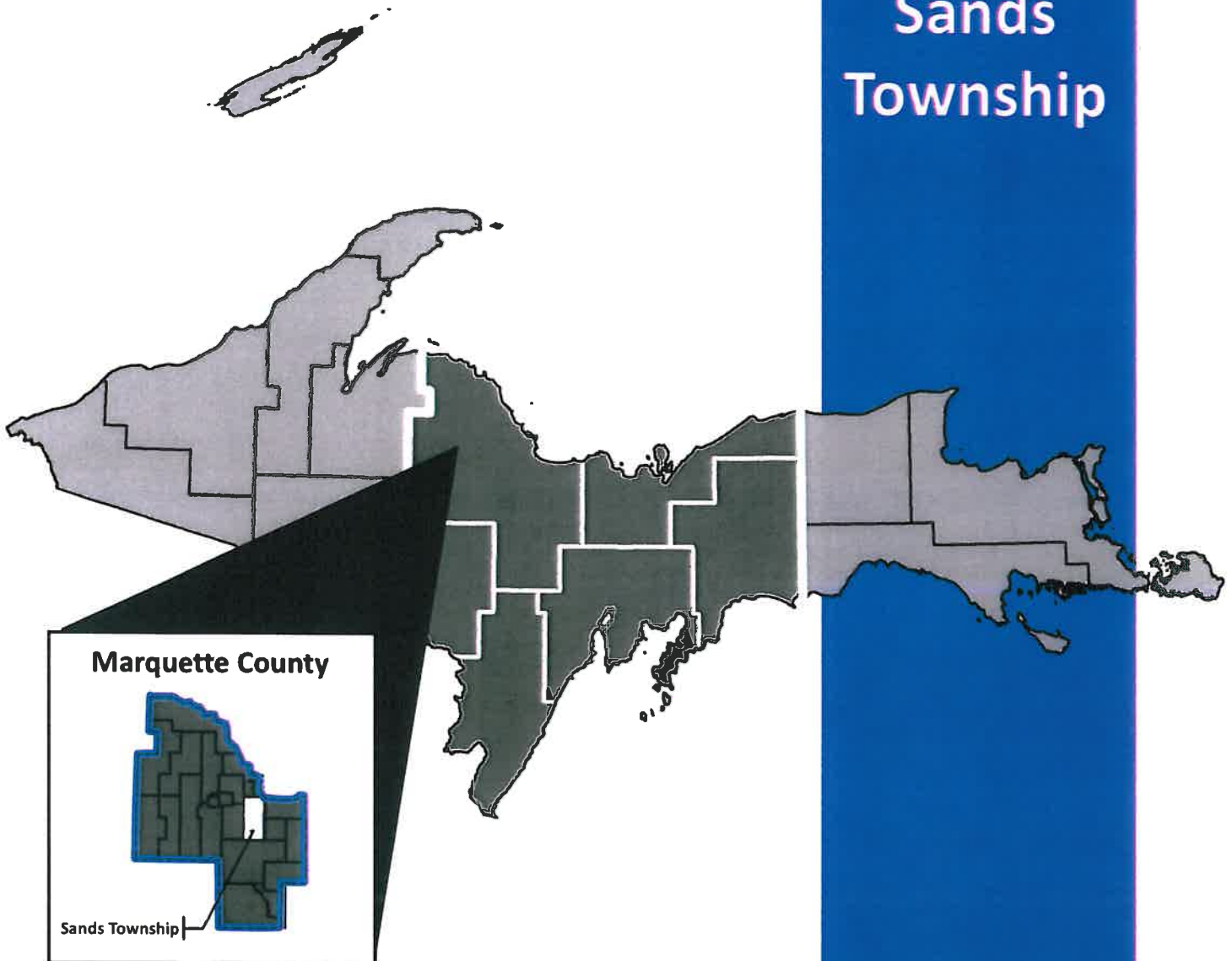


Sands Township



Marquette County



Sands Township

Recreation Plan

2011-2015

Adopted: July 12, 2011





RICK SNYDER
GOVERNOR

STATE OF MICHIGAN
DEPARTMENT OF NATURAL RESOURCES
LANSING



RODNEY A. STOKES
DIRECTOR

October 4, 2011

Mr. Peter Van Steen
Transportation Planner
CUPPAD
2415 14th Avenue South
Escanaba, MI 49829

Dear Mr. Van Steen:

SUBJECT: Sands Township Recreation Plan

Please find attached your copy of the recreation plan checklist recently submitted to our office for approval. Your recreation plan has been approved.

Your recreation plan will expire December 31, 2016.

If you have any questions, please feel free to contact me. Our address is: **Grants Management, Department of Natural Resources, P.O. Box 30425, Lansing, MI 48909-7925.**

Sincerely,

Christie Bayus, Grant Coordinator
Grants Management
517-335-2253
bayusc@michigan.gov

CB:lh
Attachment
cc: Mr. Lee Yelle, Sands Township

**COMMUNITY PARK, RECREATION, OPEN SPACE, AND
GREENWAY PLAN CERTIFICATION CHECKLIST**

By Authority of Parts 19, 703 and 716 of Act 451, P.A. 1994, as amended, submission of this
information is required for eligibility to apply for grants

INSTRUCTIONS: Complete, obtain certification signatures and submit this checklist with a locally adopted recreation plan.

All recreation plans are required to meet the content and local approval standards listed in this checklist and as outlined in the *Guidelines for the Development of Community Park, Recreation, Open Space and Greenway Plans* provided by the Michigan Department of Natural Resources (DNR). To be eligible for grant consideration, plans must be submitted to the DNR prior to the grant application deadline with a completed checklist that has been signed by an authorized official(s) of the local unit of government(s) submitting the plan.

PLAN INFORMATION		
Name of Plan: Sands Township Recreation Plan 2011 - 2015		
List the community names (including school districts) covered by the plan:	County	Month and year plan adopted by the community's governing body
Sands Township	Marquette	July 12, 2011

PLAN CONTENT
INSTRUCTIONS: Please check <u>each</u> box to certify that the listed information is included in the <u>final</u> plan.
<input checked="" type="checkbox"/> 1. COMMUNITY DESCRIPTION
<input checked="" type="checkbox"/> 2. ADMINISTRATIVE STRUCTURE
<input checked="" type="checkbox"/> Roles of Commission(s) or Advisory Board(s)
<input checked="" type="checkbox"/> Department, Authority and/or Staff Description and Organizational Chart
Annual and Projected Budgets for Operations, Maintenance, Capital Improvements and Recreation
<input checked="" type="checkbox"/> Programming
<input checked="" type="checkbox"/> Current Funding Sources
<input checked="" type="checkbox"/> Role of Volunteers
<input checked="" type="checkbox"/> Relationship(s) with School Districts, Other Public Agencies or Private Organizations
Regional Authorities or Trailway Commissions Only
Description of the Relationship between the Authority or Commission and the Recreation Departments of
<input type="checkbox"/> Participating Communities
<input type="checkbox"/> Articles of Incorporation
<input checked="" type="checkbox"/> 3. RECREATION INVENTORY
<input checked="" type="checkbox"/> Description of Methods Used to Conduct the Inventory
<input checked="" type="checkbox"/> Inventory of all Community Owned Parks and Recreation Facilities
<input checked="" type="checkbox"/> Location Maps (site development plans recommended but not required)
<input checked="" type="checkbox"/> Accessibility Assessment
<input type="checkbox"/> Status Report for all Grant-Assisted Parks and Recreation Facilities
<input checked="" type="checkbox"/> 4. RESOURCE INVENTORY (OPTIONAL)
<input checked="" type="checkbox"/> 5. DESCRIPTION OF THE PLANNING PROCESS

**TOWNSHIP OF SANDS
MARQUETTE COUNTY, MICHIGAN**

RESOLUTION TO ADOPT UPDATED RECREATION PLAN FOR 2011-2015

WHEREAS, the Sands Township Board deems it appropriate to update the current recreation plan for Sands Township, and has reviewed the Sands Township Recreation Plan 2011-2015, which recognizes various Township recreation needs, and;

WHEREAS, the required publication notice for a public hearing was published on May 9, 2011 and the hearing held on June 14, 2011 to accept public comment regarding the Sands Township Recreation Plan 2011-2015;

WHEREAS, after the public hearing several changes were made to the plan, and the changes were incorporated into another draft, which was subsequently reviewed by the Sands Township Board;

NOW, THEREFORE, BE IT RESOLVED, that the Sands Township Board does hereby adopt the Sands Township Recreation Plan for 2011-2015 as its official recreation planning document.

The foregoing resolution offered by board member, *Darlene Walch* and supported by board member *Lee Yelle*.

Upon roll call vote the following voted:

David Kallio - *Yes*
Joe Wixtrom - *Yes*

Lee Yelle - *Yes*
Darlene Walch - *Yes*

Cheryl Schram - *Yes*

The Supervisor declared the Resolution adopted.

Lee Yelle
Clerk

July 12, 2011
Date

CERTIFICATE:

I, Lee Yelle, the duly elected and acting Clerk of Sands Township, hereby certify that the foregoing resolution was adopted by the township board of said township at the regular meeting of said Board held on July 12, 2011 at which meeting a quorum was present, by a roll call vote of said members hereinbefore set forth; that said resolution was ordered to take immediate effect.

Lee Yelle
Lee Yelle, Sands Township Clerk

Table of Contents

	<u>Page</u>
1.0 Community Description	1
2.0 Planning/Administrative Structure	1
2.1 Planning	1
2.2 Administrative Structure	2
2.3 Budget	3
2.4 Community Volunteer Groups/ Relationship with Other Organizations	4
3.0 Description of the Community	4
3.1 Population	4
3.2 Economic Characteristics	7
3.3 Physical Characteristics	9
4.0 Recreation Inventory and Recreation Standards	14
4.1 Township Recreation Facilities	14
4.2 Area Parks and Recreation Facilities	16
4.3 Recreation Standards	17
5.0 Goals and Policies	19
6.0 Recreation Development Schedule	21
6.1 Identified Needs	21
6.2 Development Schedule	22
 Appendix A: Maps	
Appendix B: National Park & Recreation Association Suggested Facility Development Standards	
Appendix C: National Park & Recreation Association Recommended Classification System for Local & Regional Recreation Open Space and Trails	
Appendix D: National Park & Recreation Association Standards for Park Acreage	
Appendix E: Barrier Free Accessibility Requirements for Parks	
Appendix F: Public Input	

1.0 Community Description

The Township of Sands is located in east central Marquette County abutting the City of Marquette. The Township occupies more than 46,000 acres or 71.9 square miles (Map 1). The township lies within the Marquette Urban area.

2.0 Planning/Administrative Structure

2.1 Planning

This recreation plan is designed to provide a long-range plan for development of recreational activities, programs and facilities for Sands Township. This Recreation Plan serves several useful purposes. It should serve as (1) a source of information, (2) a guide for correcting deficiencies including those involving accessibility, (3) an indicator of goals and policies, (4) a framework for making decisions, and (5) a means of stimulating public interest and participation in local community recreation progress.

The Sands Township Board has longed strived to obtain a consensus of Township residents' feelings when developing recreational programs and facilities for the residents. Recognizing the importance of recreational programs within Sands Township, the Township has appointed a Citizens Advisory Committee to assist the Township with preparing a Township Recreation Plan. In 2004, the Sands Township Board established a 5-member Sands Township Recreation Committee for Parks and Recreation with representation from the Northern, Southern, Eastern, and Western portions of Sands Township. One Sands Township Board member has been appointed to serve as a liaison to the Committee. The goals of the Recreation Committee are:

1. Study existing services and indicate needs for eliminating facilities or programs
2. Educate the public on the value of parks and recreational services
3. Raise funds for specific recreational projects
4. Formulate a township recreation plan for adoption by the township board
5. Sponsor cooperative special programs
6. Serve as a clearinghouse for citizen's suggestions, reactions and opinions and present to the township board

The Township Board and Recreation Committee have approached township residents. Groups and individuals have expressed to the township board what they feel are improvements needed at facilities.

Initial discussion on the need for revisions to the township recreation plan was held during the February 8, 2011 regular township board meeting. The posted meeting agenda and minutes of the meeting are included in Appendix F. At that meeting, the Township Board indicated their desire that improvements be made to the existing plan.

The Recreation Committee conducted a public meeting on March 25, 2011 to gather input from the public concerning suggestions for improvements to recreation and for development of the

recreation plan. A copy of the advertisement, written input received and minutes of the meeting are found in Appendix F.

The Township Recreation Plan was drafted by staff of the CUPPAD Regional Commission utilizing previous plan information, review of previous meeting minutes, discussion with the Township Board and Chair of the Township Recreation Committee and public input received at the March 25, 2011 public meetings. The draft plan was made available to public residents for review at the township hall; a notice was in the local newspaper informing the citizenry. The Township Board held a public hearing to discuss and review the recreation plan at its June 14, 2011 meeting. At the meeting several comments and suggestions were made concerning the plan, which have been incorporated into another draft of the plan. A copy of the advertisement and minutes of the meeting are included in Appendix F.

The Sands Township Board discussed and reviewed the revised draft at their July 12, 2011 meeting. The Township Board adopted the Plan at the regularly scheduled meeting on July 12, 2011.

A copy of this plan is on file with the Marquette County Planning Commission and the CUPPAD Regional Commission.

The Plan outlines the facilities and programs to be developed in Sands Township during the next five years, as listed in Section 6.0 RECREATION DEVELOPMENT SCHEDULE. The Township Board and the Sands Township Recreation Committee will continually examine the recreational needs of the community, and amend the plan as needed.

2.2 Administrative Structure

The Township has significantly improved and expanded recreational facilities and programs. Recreation administration, management, program development, and planning are the responsibilities of the Sands Township Board. This five-member, elected governing body is responsible for the implementation of the recreation capital improvement program to assure limited funds available are spent on projects that produce maximum benefits to the entire community. The Township Board continues to look to the recreation committee for input and guidance.

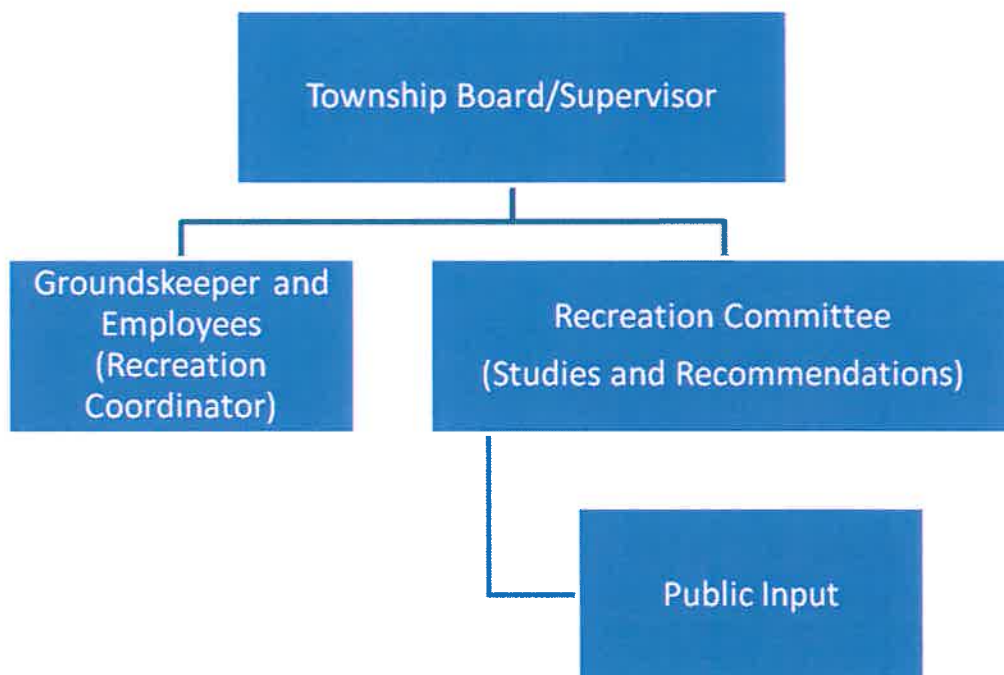
Maintenance of the facilities is performed by Township employees, donated labor. The Township has part-time groundskeepers who are responsible for maintenance at the various township-owned facilities. During the summer, the Township Board uses seasonally hired workers to perform needed work at township properties.

The Township Board is ultimately responsible for the maintenance of the recreation facilities. The Township Supervisor plans and directs the work. Any needed expenses for supplies come from the Township's Recreational Facilities Fund, as well as the General Fund.

Sands Township operates the Strawberry Lake Recreation Area on a seasonal basis. The park is maintained by the groundskeeper. An on-site, live-in caretaker is again contemplated for Strawberry Lake. An organizational chart is depicted below.

Figure 2-1 shows the Township's Parks and Recreation organizational chart.

Figure 2-1
RECREATION ORGANIZATIONAL CHART



The township has had very limited problems associated with vandalism at its facilities. Through the efforts of township officials and local law enforcement agencies, the problem is minimal.

2.3 Budget

The recreation budget is the responsibility of the Sands Township Board, who maintains fiscal control through approval of expenditures. During the past five years, the Township Board has spent in excess of \$518,000 for recreational purposes. During this time, the Township Board has made improvements to a number of recreational facilities in the township.

One considerable expenditure of funds was the development of the Sands Township Recreation Area in 2006. In excess of \$85,500 of township funds was used to match \$95,500 of state funds to develop the new Sands Township Recreation Area. The new facility has bathrooms, basketball and tennis courts, playground equipment. Since that time a pavilion has been added.

The Township has allocated approximately \$276,000 of general fund monies for recreation for years 2006-2010. The annual totals presented below include all recreation expenses including wages, programming and capital improvements paid with Township funds:

2010	\$ 18,000
2009	\$ 56,000
2008	\$ 12,000
2007	\$ 22,000
2006	\$421,000

2.4 Community Volunteer Groups/Relationship with Other Organizations

The Township Board does not have formal relationships with public or private organizations or school districts at this time. There have been informal discussions with the Citizens for the Betterment of Blueberry regarding improvements at the MDNR Blueberry Ridge Cross Country ski trail.

3.0 Description of the Community

3.1 Population

For any planning endeavor, careful attention must be given to the analysis of population trends and projections. Such an analysis is necessary to determine existing or future needs based on the characteristics of the area's population. Population analysis also assists in determining the direction of local capital improvements and related expenditures. For recreation planning, population data is also useful when applying recreation standards to a community.

The population of Sands Township took a dramatic increase during the 1950's with the establishment of K.I. Sawyer Air Force Base in 1955. There was a steady population increase as a result of the Base's influence. While the Township population increased 10% in the 1980's, the County as a whole dropped 4%.

TABLE 3-1 POPULATION TRENDS: 1940-2010								
	1940	1950	1960	1970	1980	1990	2000	2010
Sands Twp.	172	179	1,657	2,164	2,437	2,696	2,127	2,285
Marquette Co.	47,114	47,654	56,154	64,686	74,101	70,887	64,634	67,077

Source: U.S. Census.

The K.I. Sawyer Air Force base officially closed on September 30, 1995, but staff reductions were under way beginning in 1993. The closure of the air force base negatively affected the township and the surrounding area. Between 1990 and 2000, the township experienced a loss of 569 persons, representing a 21 percent drop in population. Population decrease was also registered in the adjoining communities as well. However, in the recent decade the population has begun to rebound with a 2010 Census figure of 2,285; the current population is more than the 1970 census figure. During the same time-period, the population for Marquette County increased as well from 64,634 persons to 67,077 persons.

The 2010 census data for the township reveals there are 871 households in the township, an increase of 13.4% above the figure of 768 for the 2000 Census.

TABLE 3-2 HOUSEHOLDS: 2000 and 2010		
Jurisdiction	2000 Census	2010 Census
Sands Township	768	871
Marquette County	25,767	27,530

Source: US Census, 2000 and 2010

Sands Township is predominately White. The second largest racial category is American Indian representing almost three percent of the population. No significant change in racial diversity seems likely in the near future. There are 32 persons (1.4 percent) in the Township with Hispanic or Latino descent.

TABLE 3-3 RACIAL COMPOSITION SANDS TOWNSHIP, 2010		
Race Category	Number	Percent
One Race	2,245	98.64
White	2,176	94.84
Black or African American	12	0.53
American Indian	67	2.93
Asian or Pacific Islander	8	0.35
Two or More Races	31	1.36

Source: U.S. Census, 2010

As reported in the 2010 Census, the age cohorts of Sands Township and Marquette County are depicted in the following table. The township has a slightly higher percentage of residents in the 19 age and under category than compared with Marquette County, at 26.0 percent and 23.0 percent, respectively. Forty-four percent of the township population are between the ages of 25 and 54. The most marked difference in the age distribution is found in the 65 years of age and older category, with 7.7 percent in the township and 14.7 percent for Marquette

County as a whole. The age of the residents of an area may indicate emerging needs for recreational facilities. The median age of Sands Township residents in 2010 was 42.0, significantly higher than the median age of Marquette County residents at 39.4.

TABLE 3-4 AGE COMPOSITION: 2010 SANDS TOWNSHIP AND MARQUETTE COUNTY				
Age Cohorts	Sands Township		Marquette County	
	Number	Percent	Number	Percent
Under 5 years	121	5.3	3,491	5.2
5 to 9	130	5.7	3,293	4.9
10 to 14	188	8.2	3,472	5.2
15 to 19	155	6.8	5,140	7.7
20 to 24	91	4.0	7,026	10.5
25 to 34	232	10.2	8,117	12.1
35 to 44	330	14.4	7,291	10.9
45 to 54	450	19.7	9,831	14.7
55 to 59	236	10.3	5,333	8.0
60 to 64	176	7.7	4,256	6.3
65 to 74	136	6.0	5,162	7.7
75 to 84	33	1.4	3,206	4.8
85 and over	7	.3	1,459	2.2

Source: U.S. Census, 2010

As reported in the 2000 Census, there are 229 non-institutionalized persons with a reported disability residing in the township.

TABLE 3-5 NUMBER OF DISABLED PERSONS, SANDS TOWNSHIP AND MARQUETTE COUNTY, 2000		
Age Category	Sands Township	Marquette County
Person 5 to 20:	28	1,014
Persons 21 to 64:	158	5,141
Person 65 years and over:	43	3,116

Source: U.S. Bureau of the Census, 2000, Table DP-1

As reported in the 2010 Census, there were 1,158 males and 1,127 females residing in the township. Gender by age category is presented below.

TABLE 3-6				
GENDER, SANDS TOWNSHIP, 2010				
	Males	Percent of Population	Females	Percent of Population
Total	1,158	50.7	1,127	49.3
18 years & over	876	38.3	872	38.2
65 years & over	87	3.8	89	3.9

Source: U.S. Bureau of the Census, 2010

In 1999, the per capita income for Sands Township was \$21,943 which was higher than the per capital income levels for the County, but lower than the State (Table 3-7). The median household income for the township is higher than both Marquette County and the state. The median family income is higher than the county and the state level. There are 90 individual with incomes below the established poverty level, as reported in Census 2000 figures.

TABLE 3-7			
INCOME LEVELS FOR SELECTED AREAS, 1999			
	Per Capita	Median Household	Median Family
Sands Township	\$21,943	\$51,948	\$54,643
Marquette County	\$18,070	\$35,548	\$46,281
Michigan	\$22,168	\$44,667	\$53,457

Source: U.S. Bureau of the Census, 2000, Table DP-3

3.2 Economic Characteristics

The economic history of Sands Township, like that of the region, is closely related to natural resources and features. With approximately 87 percent of the Township's land area classified as forested, logging and lumbering maintain their historical importance in the local economy. The proximity and abundance of forest products provide much of the raw material utilized in commercial enterprises.

The economic well-being of the Township is closely related to the activities associated with the Marquette-Negaunee-Ishpeming urban center. Many township residents are employed in or nearby the City of Marquette. The mean travel time to work for township residents is 19.0 minutes. Major economic activities within the township are manufacturing, retail trade, agricultural and forestry.

The northern part of Sands Township is a bedroom residential community for the nearby City of Marquette, whose economy is principally based on the service industry. The majority of the Township's commercial activities occur along M-553 and CR 480. Countywide, the Marquette-Negaunee-Ishpeming urban corridor is the primary trade and employment center, and statistics on a county level reflects trends in this area more than in the rural areas of the county. Many residents in the outlying areas of the county, including Sands Township, are employed in the urban corridor and purchase goods and services there, while choosing to live in a more rural setting. The local economy is heavily dependent on the service sector and retail trade.

Manufacturing is even less important on a countywide basis, while public administration employs a higher percentage of people than at the county level.

TABLE 3-8 EMPLOYMENT BY INDUSTRY SANDS TOWNSHIP AND MARQUETTE COUNTY				
Industry	Sands Township		Marquette County	
	Number	Percent	Number	Percent
Agriculture and Mining	52	4.5	1,612	5.3
Construction	108	9.4	1,737	5.7
Manufacturing	58	5.1	1,908	6.2
Wholesale Trade	27	2.4	678	2.2
Retail trade	144	12.5	4,164	13.6
Transportation, warehousing, utilities	48	4.2	1,585	5.2
Information	11	1.0	697	2.3
Finance, insurance real estate	51	4.4	1,448	4.7
Professional and management	86	7.5	1,523	5.0
Education, health and social services	368	32.1	8,486	27.7
Arts, entertainment, accommodation, food services	87	7.6	3,274	10.7
Other services	33	2.9	1,647	5.4
Public administration	75	6.5	1,880	6.1

Source: Table DP-3 Profile of Selected Economic Characteristics: 2000, US Bureau of the Census, Census 2000

Recreational opportunities attract nonresidents who pursue activities such as fishing, hunting, camping and snowmobiling. Local businesses depend on nonresident spending for much of their revenue. The economic impact, though somewhat seasonal, is significant throughout the year.

The median household income, as reported in the 2000 Census was \$51,948. There are 90 individuals with incomes below the established poverty level, as reported in Census 2000. About 20 percent of the households in the township have incomes attributed to retirement income. The mean retirement income is \$14,968.

TABLE 3-9 SANDS TOWNSHIP, INCOME IN 1999 BY HOUSEHOLDS		
Income Range	Number of Households	Percent
Less than \$10,000	25	3.2
\$10,000 to \$14,999	30	3.8
\$15,000 to \$24,999	82	10.4
\$25,000 to \$34,999	83	10.5
\$35,000 to \$49,999	141	17.9
\$50,000 to \$74,999	265	33.8
\$75,000 to \$99,000	79	10.0
\$100,000 or more	84	10.7

Source: Table DP-3 Profile of Selected Economic Characteristics: 2000, US Bureau of the Census, Census 2000

The unemployment rate for Marquette County has been lower than the Upper Peninsula, but compares unfavorably with the United States.

TABLE 3-10 MARQUETTE COUNTY LABOR FORCE AND UNEMPLOYMENT, 2006- 2010							
Year	County Civilian Labor Force			Unemployment Rate			
	Employed	Unemployed	Total	Marquette	U.P.	Michigan	U.S.
2006	33,887	21,38	36,025	5.9	7.1	6.9	4.6
2007	34,004	2,201	36,205	6.1	7.3	7.1	4.6
2008	33,849	2,514	36,363	6.9	8.2	8.3	5.8
2009	32,483	3,723	36,206	10.3	12.2	13.6	9.3
2010	32,034	3,677	35,711	10.3	12.6	13.1	9.6

Source: Labor Market Information, DeLEG

3.3 PHYSICAL CHARACTERISTICS

3.3.1 Land Use

The predominant forest cover types in Sands Township are pine and northern hardwood. According to the Current Use Inventory, the majority of Sands Township's 45,518 acres are forested. Forested areas account for 39,892.6 acres, or 87.6 percent of the Township. Most of this area is second growth forest, since much of the Township was logged off during the late 1800s and the early part of the 20th century.

Of the area classified as urban and built up, about 495 acres is residential development. This category includes single-family homes (including mobile homes), seasonal dwellings, and multi-family housing. In Sands Township, most of the residential areas are made up of single-family homes on relatively large lots, which are located primarily along major roads and in subdivisions in the northern portion of the Township. Forty-seven acres are classified as primarily occupied by mobile homes. The most concentrated residential development occurs in the portion of the Township that borders the City of Marquette and the Township of Chocolay.

More than 394 acres of the Township is classified as extractive, specifically sand and gravel pits. A. Lindberg and Sons, Inc. operate a large sand and gravel extraction operation in the northwestern portion of the Township. Most of the commercial land use in the township is located along CR 480 and M-553.

Nonforested lands make up about 1,408.4 acres of the Township.

Agricultural areas broadly defined as lands that are used for the production of food and fiber consume a total of 618 acres. The agricultural areas in Sands Township are mostly located in the east-central portion of the Township, and are generally located on soils with few or no limitations for agriculture uses. Most of the agricultural land in the Township is cropland.

Sands Township's 578.3 acres in wetlands puts constraints on the types of development which can occur in these areas. The largest concentrations of wetlands are located in the southwestern portion of the Township, with scattered areas occurring throughout the rest of the Township.

There are roughly 161 acres within Sands Township classified as water. This includes the nine lakes that are scattered throughout the Township. Water bodies are a significant determinant of land use in many areas, by supplying sites for water-dependent industry, water-based recreational sites, and residential or commercial development. Where such water bodies are completely or partially surrounded by public land, they are generally available for public recreational use.

TABLE 3-11 SANDS TOWNSHIP LAND USE PATTERN		
Land Use	Acres	Percent
Urban and Built Up	2,742.6	6.0
Residential	494.7	1.1
Commercial	387.0	0.9
Industrial	6.3	0.0
Transportation, Communications, & Utilities	1,221.0	2.7
Extractive Uses	394.1	0.9
Open Land, Other	239.5	0.5
Agriculture	618.0	1.4
Nonforested	1,408.4	3.1
Forested	39,892.6	87.6
Northern Hardwood	12,318.8	27.1
Aspen/White Birch Association	9,262.0	20.3
Lowland Hardwoods	133.8	0.3
Pine	17,240.0	37.9
Other Upland Conifers	156.5	0.3
Lowland Conifers	781.5	1.7
Water	160.9	0.4
Wetlands	578.3	1.3
Barren	117.3	0.3
Total	45,518.1	100.0

Source: MDNR, Michigan Resource Information System.

A portion of the former air force base has been developed as Marquette County's Sawyer International Airport. Canadian National Railroad runs throughout the area, connecting the Marquette Iron Range with Escanaba where the ore is transferred to ships for destinations on the southern Great Lakes.

3.3.2 Natural Features and Water

There is a handful of smaller lakes scattered throughout the Township, most of which are surrounded by corporate lands. Strawberry Lake, centrally located in the township, is owned by the Township. Lake Pelissier, in the northern part of the Township, is the largest lake. The East Branch of the Escanaba and Carp are the major rivers running through the Township.

Sands Township is home to the Sands Plains Aquifer considered to be one of the highest quality water sources in Michigan. This aquifer provides groundwater to thousands of individuals in Sands Township and surrounding townships. The Sands Aquifer is a major source of the water supply in the Chocolay Watershed and streams in the local area.

An abundance of a natural habitat allows for thriving wildlife population including mammals, such as white-tail deer, black bear, moose, fox, grey wolf, coyote, beaver, muskrat, mink and

raccoon. The lakes and streams provide good fishing opportunities for various species of trout, perch, pike and panfish.

The general topography of the Township offers a variety of landscape. The eastern and northern portions have the greatest topographic changes. From a soil standpoint the area is dominated by sandy soils, there is also a small amount of silt loam soil in the northern portion. Sands Township terrain is typical of Marquette County in that it is varied and contains flat, gently rolling hilly areas. The eastern and northern portions of the township are the most rugged topography. The remainder of the township is generally level to rolling hills.

The highest point in the Township is situated in the north-central portion of the Township, just west of Pelissier Lake, with an elevation of approximately 1,440 feet above sea level, or 838 feet above Lake Superior. The lowest elevation in the Township is about 700 feet above sea level, or 98 feet above the level of Lake Superior, which is located in the northeastern portion of the Township, near Silver Creek.

3.3.3 Transportation

The major roads in the Township are M-553 and CR- 480. The former runs north-south and connects K.I. Sawyer and the communities of Gwinn and Little Lake to the south with Marquette. State highway M-553 in combination with M-35 provides a major link from the Escanaba/Gladstone area into the Marquette/Ishpeming/Negaunee urban center. County Road 480 runs east-west and connects with Negaunee on the west and Highway 41 on the east. Sawyer International Airport provides passenger service to Chicago, Detroit, Minneapolis, and other Midwest cities.

3.3.4 Soils

The movement of glaciers over the bedrock originated the soils of today. There are six soil associations found in the township. The following is an inventory of soil associations found in the township and their major characteristics. A broad interpretation of the suitability for recreational use is given, according to the soil survey prepared by the U.S. Department of Agriculture Soil Conservation.

Four soil associations found in Sands Township are located on bedrock controlled moraines:

Keewaydin-Michigamme-Rock outcrop Association consists of very deep and moderately deep, nearly level to very hilly, well-drained soils and rock outcrop.

Schweitzer-Michigamme-rock outcrop Association consists of very deep and moderately deep, gently to very hilly, well drained loamy soils and rock outcrops.

Pits-Dump Mine-Slickens Association consists primarily of former pits and dump mines.

Kalkaska-Ishpeming-rock outcrop Association consists of very deep to moderately deep, gently rolling to very hilly, somewhat excessively drained sandy soils and rock outcrops.

There are three soil associations found on till floored lake plains and dissected moraines:

Munising-Yalmer Association consists of very deep, nearly level to gently sloping, moderately well drained loamy and sandy soils.

Keweenaw-Kalkaska-Waiska Association consists of very deep, moderately sloping to very steep, well-drained, somewhat excessively drained and excessively drained, sandy soils.

Garlic-Alcona-Voelker Association consists of very deep, moderately sloping to very steep, well-drained, sandy and loamy soils.

There is one soil association found on outwash plains, outwash terraces and beach ridges:

Grayling Association consists of very deep, nearly level to very hilly, excessively drained sandy soils.

There is one soil association found on disintegration moraines:

Rubicon-Keweenaw Association consists of very deep, gently undulating to very hilly, excessively drained and well drained sandy soils.

3.3.5 Climate

Sands Township has a humid continental climate that is heavily influenced by Lake Superior, with cold winters and humid cool summers. The lake helps keep temperatures cool in summer and generally moderate in winter. The temperature in the Township ranges from the nineties to the negative teens, with a mean annual temperature of about 42 degrees Fahrenheit. Total precipitation averages approximately 34 inches per year, with the wettest month in September and the driest month in February. The winter snowfall in the Township averages between 90 and 110 inches annually.

3.3.6 Zoning

Zoning has been in effect in Sands Township since the 1960's. The majority of the Township is zoned Forestry and Recreation (F-2), with the intent of allowing continued forestry and recreational uses of rural wooded areas in the Township, and maintenance of these areas for the future use and enjoyment of Township residents and visitors.

4.0 Recreation Inventory and Recreation Standards

4.1 Township Recreation Facilities

Recreational facilities used by both residents and non-residents are listed in Table 4-1 below and shown on Map 2. The recreation advisory committee compiled the inventory.

Township owned facilities have been given an accessibility assessment rating. The Township makes provisions to assure its recreational programs are accessible to those with disabilities. Future development at recreational areas will comply with provisions of the Americans with Disabilities Act and other appropriate federal and state regulations. The barrier free accessibility requirements for parks are provided in Appendix E.

**TABLE 4-1
RECREATION FACILITIES WITHIN SANDS TOWNSHIP**

1. Strawberry Lake Recreation Area	Size: Approximately 120 acres	Accessibility Assessment Rating: 1
The Recreation area is located about 1 mile west of M-553 near the Marquette County Fairgrounds. The park is used primarily during the summer months by Township residents for picnics, fishing, swimming, and small gatherings. Camping and open fires are prohibited in the park. Gas powered boats are not allowed on Strawberry Lake. The facilities at the site includes: shore area for fishing, two picnic tables, primitive swimming beach, undeveloped boating area, small concrete picnic area, portable toilet, small earth surfaced parking area, trash can, large trash container, small gate at the entrance of park, and large undeveloped forest area surrounding lake. Trails in the area have been designated for horseback riding.		
2. Township Forest Area	Size: 109 acres	Accessibility Assessment Rating: 1
The forest is located adjacent to the Strawberry Lake Recreation area and the Marquette County Fairgrounds. The area is an undeveloped site with an active tree planting program.		
3. Blueberry Ridge Pathway	Size: 15 mile trail	Accessibility Assessment Rating: 2
The MDNR owned and managed ski/hiking trail is located at the intersection of M-553 and CR-480 within the Escanaba river State Forest. During the winter the pathway has 1.7 miles of lighted trail available for night skiing.		
4. Marquette County Fairgrounds	Size: 196.5 acres	Accessibility Assessment Rating: 3
The fairground facility is located along M-553 adjacent to the Township Forest Area. This parcel of land is the site of the county fair that is held yearly in August. Facilities at the site include: exhibition building, American Legion building, 4-H building (with kitchen and restroom), horse show arena, two cattle show rings, horse barn, poultry and small animal building, large livestock building, office building (with a kitchen and restrooms), barrier-free restroom/utility building, two storage structures, power outlets, two wells, large lighted parking area, outside speaker system, dirt race track, mud drag strip, paved go-cart track, large carnival area, outside horse stalls, two outdoor pavilions, and portable bleachers. All the buildings at the site are used for storage during the winter months. The property/facility is privately owned.		

**TABLE 4-1
RECREATION FACILITIES WITHIN SANDS TOWNSHIP**

5. Escanaba River State Forest	Size: 7,000 acres	Accessibility Assessment Rating: 2
The MDNR maintains more than 7,000 acres of forested lands in the township that is available for a variety of outdoor recreation pursuits, including an established equestrian trail system.		
6. Sands/Gwinn Trail	Size: 10 miles	Accessibility Assessment Rating: 2
A portion of the trail runs from Nordeen Park to the Blueberry Ridge pathway.		
7. Sands Township Recreation Area	Size: 10 acres	Accessibility Assessment Rating: 4
The Recreation Area is located adjacent to the Sands Township Office Complex at 987 M-553 at the Cross Roads. Amenities at the park include: <ul style="list-style-type: none"> ➤ Tennis court ➤ Basketball court ➤ Playground ➤ Parking area ➤ Vault toilets ➤ Pavilion 		
8. Township Gym/Office Complex	Size: acres	Accessibility Assessment Rating: 4
An indoor recreational facility located at the township municipal offices. Amenities include: <ul style="list-style-type: none"> ➤ Gym area for playing pickleball, volleyball, dodgeball, banquet area for receptions, etc. 		

4.1.1. Township Recreation Grant History

Sands Township has received one MDNR grant to assist with development of the Sands Township Recreation Area. Previously, the township was awarded a grant for development at the Strawberry Lake property site, but the grant was withdrawn. The township recreation facilities are well maintained, currently in good condition and used by township residents and residents of the surrounding area.

- Sands Township Recreation Area #TF1061
 - Project Year: 1985
 - Grant Amount: \$90,000
 - MDNR Grant Project Status: Withdrawn
- Sands Township Recreation Area #26-01644
 - Project Year: 2005
 - Grant Amount: \$95,500
 - MDNR Grant Project Status: Closed
 - Funds used for development of basketball and tennis courts, playground, parking lot and vault toilets at new Sands Township Recreation Area.

4.2 Area Parks and Recreation Facilities

A listing of selected recreational facilities located in the immediate area is identified on Table 4-2.

TABLE 4-2 RECREATIONAL SITES IN NEARBY AREAS	
Site	Description
West Branch Township	
West Branch Recreation Area	Picnic area and fishing site on the West Branch of Silver Lead Creek
Chocolay River Access Site	Fishing
Engman Lake Access Site	Fishing, boating, hard-surfaced ramp, toilets, parking
Sporley Lake Access Site	Fishing, boating, hard-surfaced ramp, parking
Private Sportsman Club	
Skandia Township	
Maple Lane Sports	Cross-country ski area
Skandia-West Branch Recreation Area	Pavilion, playground, ball fields, tennis/basket court, ice rink
City of Marquette	
Presque Isle Park	Picnic area, cross-country ski trail, playground, tennis courts, band shell, fishing, shuffleboard, horseshoes
Presque Isle Marina	Boat launching and docking facilities on Lake Superior
Tourist Park	Ballfield, playground, picnic area
Marquette Mountain	Downhill skiing, lodge, luge run, picnic area, horse shoes, volleyball
Ellwood Mattson Lower Harbor Park	Picnic area, playground, boat launch, waterfront access to Lake Superior
Shiras Park	Sand beach, picnic area, shoreline bike path
Lakeview Arena	Recreation and convention facility used for hockey, skating, concerts, shows, exhibits, etc.
South Beach Park	Open space, picnic tables, boat slips
Superior Dome	Indoor football field, also used for trade shows, concerts, etc.
Marquette Township	
Lions Field	Ballfield, shelter, tennis courts
Turtle Lakes	Undeveloped area
Sugar Loaf Mountain	Nature trail, scenic overlook
NMU Forest	Nature trail, cross-country ski trail, physical fitness trail
Forestville Dead River Public Access	Boat launch on Dead River

TABLE 4-2 RECREATIONAL SITES IN NEARBY AREAS	
Site	Description
Little Garlic River Public Access	Fishing access site
Forsyth Township	
Nordeen Park	Ballfield, shelter, tennis courts
Gwinn Baseball Fields	Lighted ballfields
Little Lake Baseball Field and Playground	Fenced, lighted ballfield and bleachers, play lot, concession stand, toilets, lighted ice rink
Red Fox Run	18 hole public golf course
Forsyth Township Recreation Area	Archery and rifle range, also used for sledding and other activities
Gwinn Tourist Park	Camping, swimming beach, basketball court, playground, cross-country ski trail
K.I. Sawyer	Ski hill, cross-country ski trail, ballfields, tennis courts, soccer field, picnic area, playground, golf, etc.
Esanaba River State Forest	Public land available for a variety of outdoor recreational opportunities
Commercial Forest Reserve (CFR) Lands	Privately-owned forestlands which are open to the public for fishing and hunting
Little Trout Lake	Picnicking, fishing, swimming, volleyball/basketball, playground area

4.3 Recreation Standards

4.3.1 National Recreation and Park Association (NRPA) Development Standards

One method to assess community recreation needs is the standard system developed by the National Recreation and Park Association (NRPA). This system provides a scale against which an existing recreation system can be measured so the guidelines for future needs can be created. Standards link the number of acres to the community's population.

TABLE 4-3
COMPARISON OF EXISTING RECREATIONAL FACILITIES TO SUGGESTED NRPA STANDARDS
EXISTING FACILITIES IN SANDS TOWNSHIP

Activity/Facility	No. of units per population	Standard required for area	No. of Existing Facilities	Deficiency per Standards
Badminton	1 per 5000	0.45	0	.45
Basketball	3 per 5000	0.45	3	-
Handball (3-4 wall)	1 per 20,000	0.11	0	.11
Ice Hockey	Indoor- 1 per 100,000 Outdoor- Depends on climate	0.02	0	.02
Tennis	1 court per 2000	1.0	2	-
Volleyball	1 court per 5000	0.45	1	-
Baseball	1 per 5000	0.45	0	.45
1. Official				
2. Little League	Lighted- 1 per 30,000	0.07	0	.07
Field Hockey	1 per 20,000	0.11	0	.11
Football	1 per 20,000	0.11	0	.11
Soccer	1 per 10,000	0.11	0	.11
Golf-driving range	1 per 50,000	0.05	0	.05
¼ - Mile Running Track	1 per 20,000	0.11	0	.11
Softball	1 per 5,000 (if also used for youth baseball)	0.45	0	.45
Multiple Recreation Court (Basketball, Volleyball, Tennis)	1 per 10,000	0.22	1	.22
Trails	1 system per region	1	2	-
Archery Range	1 per 50,000	0.05	0	.05
Combination Skeet and Trap Field (8 station)	1 per 50,000	0.05	0	.05
Golf				
1. Par 3 (18-hole)	• --	• -	0	-
2. 9-hole standard	• 1/25,000	• 0.09	0	.09
3. 18-hole standard	• 1/50,000	• 0.05	0	.05
Swimming Pools	1 per 20,000 (Pools should accommodate 3% to 5% of the total population at a time.)	0.11	0	.11
Beach Areas	NA	NA	NA	NA

4.3.2 Recommended Classification System for Local and Regional Recreation Open Space and Trails

The Michigan Department of Natural Resources, Grants Management Division "Guidelines for the Development of Community Park, Recreation, Open Space and Greenway Plans" includes a table of a recommended classification system for local and regional recreation open space and trails which can be found in Appendix D.

**TABLE 4-4
COMPARISON OF SANDS TOWNSHIP FACILITIES
TO COMMUNITY PARK AND OPEN SPACE GUIDELINES**

➤ Community Park

Facility Name	Acreage	Standard Acreage
Sands Township Recreation Area	10	
Township Gym	.5	
<i>Total Community Park Acreage</i>	10.5	30 to 50

➤ Regional Parks

Facility Name	Acreage	Standard Acreage
Strawberry Lake Recreation Area	120	
Marquette County Fairgrounds	196.5	
<i>Total Regional Park Acreage</i>	316.5 acres	60 to 80

➤ Natural Resource Areas

Facility name	Acreage	Standard Acreage
Township Forest Area	109	
Escanaba River State Forest	7,000	
<i>Total Natural Resource Areas</i>	7,109	variable

➤ Trails

Facility Name	Acreage	Standard Acreage
Blueberry Ridge Pathway	15 miles	
Sands/Gwinn Trail	10 miles	
<i>Total Trails Mileage</i>	25 miles	Variable

5.0 GOALS AND POLICIES

The goals that follow are guides for recreation related decision making. Consideration and observance of recreation policies should ultimately lead a community toward the attainment of its short and long-term goals.

Specific development projects and programs should initially be evaluated with respect to the recreation goals and then in terms of the proposal's contribution to the recreation system of Sands Township. The following goals should serve as general recreational guidelines toward final development strategies.

GOAL I: Provide a variety of recreational opportunities to all residents and visitors to Sands Township area.

Policies

- Develop a recreational site in Sands Township for multiple uses.
- Projects should be within easy access to all residents and visitors.
- Whenever and wherever possible, facilities should be for multiple and/or year-round use.
- Proposed projects should eliminate identified recreation deficiencies as set forth in this plan.
- Programs should be developed for use of recreational facilities.
- Provide for varied activities and programs for the entire township population

GOAL II: Make maximum use of recreation opportunities offered in our natural environment.

Policies:

- Facilities should be designed to compliment and preserve the surrounding natural qualities.
- Whenever possible, the Township, neighboring municipalities, private interests, and service clubs should coordinate the development of recreational facilities and programs.
- Existing facilities should be upgraded before new ones are built.
- Proper maintenance should be assured for all facilities.
- The Township, concerned organizations, and individual citizens should develop programs and designs to reduce the vandalism.
- The Township and public agencies should coordinate the development of local recreation facilities to eliminate duplication of effort.

- The Township should partner with other governmental agencies, local community groups and non-profit agencies in providing recreational facilities for the enjoyment of township residents and visitors to the area.

6.0 RECREATION DEVELOPMENT SCHEDULE

6.1 Identified Needs

An overall goal of the Township is to provide for varied activities and programs for the entire township population. Through community input sessions and public meetings, the community has identified the following recreational needs within Sands Township:

Township Recreation Area/Office Complex

- Develop multi-use outdoor ball fields, court, and a children's playground.
- Reinstate open gym times at the township gym.
- Develop fitness/walking trails.
- Continue with establishing picnic areas.
- Develop additional parking.
- Work with the MDNR and others with the proper placement of ORV and snowmobile trails at the site and throughout the township.
- Install lighting at the park. (This is a low priority issue as seasonal daylight hours seem sufficient.)

Strawberry Lake Recreation Area

- Improve the road into the lake area.
- Upgrade the lake area to create a swimming beach (possibly dredge the lake and bring in sand).
- Develop a picnic area with a pavilion.
- Develop a dock or boardwalk to accommodate those with a disability, especially children.
- Consider having an on-site caretaker and make upgrades to the existing caretaker cottage.
- Continue sponsorship of annual fishing day to teach fishing to children.
- Continue to uphold all MDNR specifications set on Strawberry Lake.

Escanaba River State Forest

- Continue to work with the MDNR to improve accessibility to several locations and improve signage.

Sands Plains

- Continue to work with the MDNR and others to establish hiking, biking, sled dog, ORV and snowmobile trails
- Continue to work with interested organizations to enhance the local interest in

blueberry picking.

Blueberry Ridge Trail

- Help implement and support the concept of construction of a warming shelter/lodge; the lodge would be available for both summer and winter activities. Work with local organizations and governmental entities to secure funding.
- Investigate the use of Blueberry Ridge as a location for a fitness trail.

Other Issues/Recommendations

- Have a township block party to promote the recreational facilities offered by the township.
- Have a directed tennis lesson/day camp for children.

6.2 Development Schedule

With policies and objectives identified, the task of implementation should be established. The development schedule indicates the relative priority of recreation activities and facilities according to the Township Board. This schedule is dependent upon funding availability and other priorities of the Township elected officials. The locations of these projects are depicted on Map 2.

TABLE 6-1 RECREATION DEVELOPMENT SCHEDULE			
YEAR	PROJECT	COST	FUNDING SOURCES
#1	Improve public access into and around Strawberry Lake; construct adequate parking at Strawberry Lake; improve picnic facilities and swimming area at Strawberry Lake	\$50,000	MDNR/Local
#2	Help implement the construction of a warming shelter/lodge at or near the Blueberry Ridge Trail.	\$80,000	MDNR/Local/Private
#3	Establish walking trails in and around Strawberry Lake. The walking trails will not conflict with the existing horseback riding trails.	\$10,000	Local
#4	Establish walking trail/fitness strip on township property or on state owned properties, such as the existing Blueberry Ridge Trail.	\$50,000	MDNR/Local
#5	Upgrade lighting at recreation facility	\$10,000	Local

APPENDIX A

MAPS

Map 1: Location Map

Map 2: Location of Township Recreational Facilities

**Sands Township
Location Map**



Sands Township Recreation Facilities

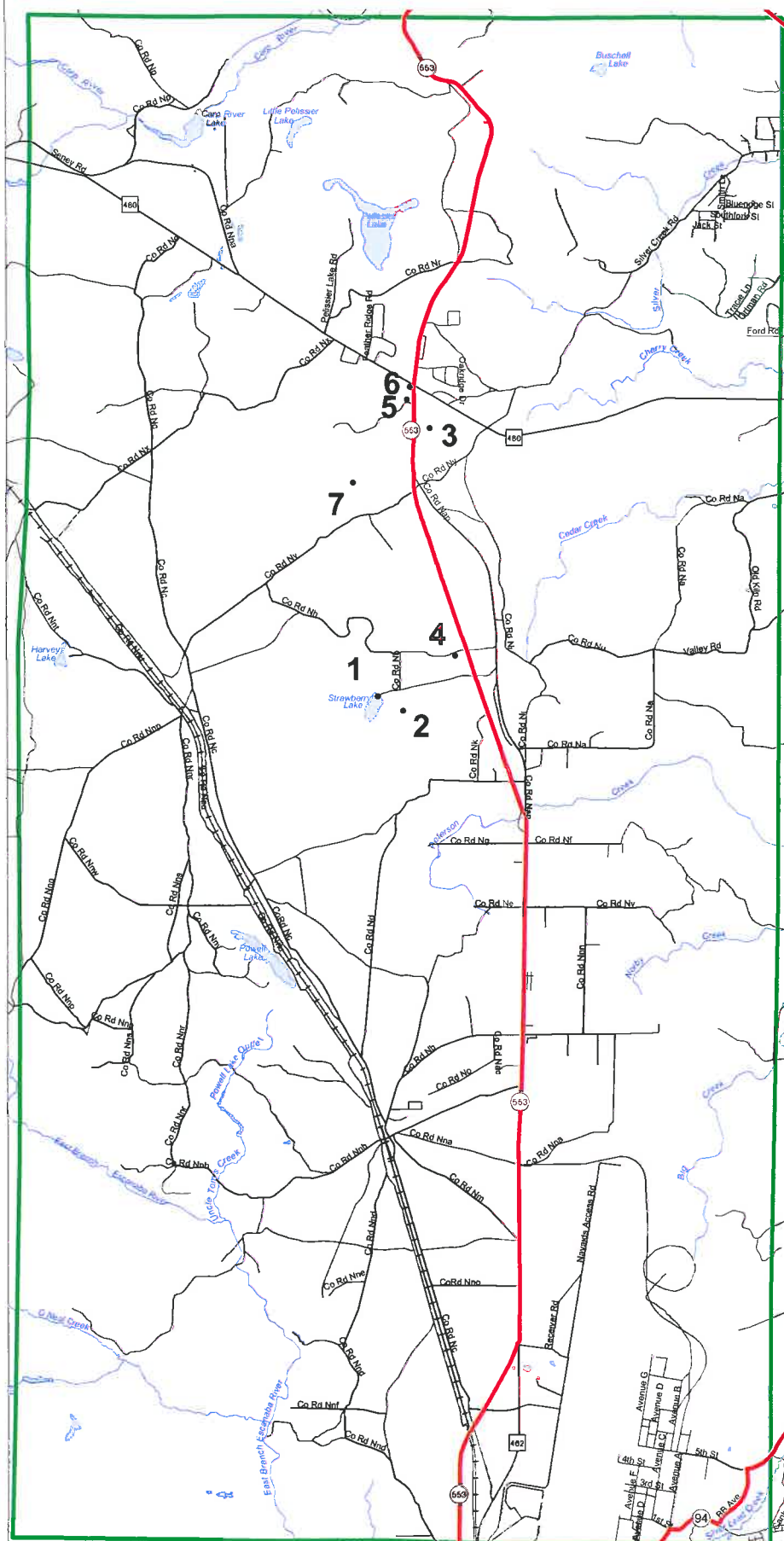
LEGEND

1. Strawberry Lake Recreation Area
2. Township Forest Area
3. Blueberry Ridge Pathway
4. Marquette County Fairgrounds
5. Sands Township Recreation Area
6. Township Gym / Office Complex
7. Sands / Gwinn Trail



Compiled By: CUPPAD, 2011

0.8 0 0.8 1.6 2.4 3.2 4 Miles



APPENDIX B

**NATIONAL PARK AND RECREATION ASSOCIATION
SUGGESTED FACILITY DEVELOPMENT STANDARDS**

NATIONAL PARK AND RECREATION ASSOCIATION
Suggested Facility Development Standards

Activity/Facility	Recommended Space Requirements	Recommended size and dimensions	Recommended orientation	No. of units per population	Service Radius	Location Notes
Badminton	1620 sq. ft.	Singles – 17' x 44' Doubles – 20' x 44' With 5' unobstructed area on all sides.	Long axis north – south.	1 per 5000	¼ - ½ mile	Usually in school, recreation center or church facility. Safe walking or biking access.
Basketball						
1. Youth	2400–3036 sq. ft.	46'-50' x 84'	Long axis north – south.	1 per 5000	¼ - ½ mile	Same as badminton. Outdoor courts in neighborhood and community parks, plus active recreation areas in other park settings.
2. High School	5040-7280 sq. ft.	50' x 84'				
3. Collegiate	5600-7980 sq. ft.	50' x 94' with 5' unobstructed space on all sides				
Handball (3-4 wall)	800 sq. ft. for 4-wall 1000 sq. ft. for 3-wall	20' x 40' – Minimum of 10' to rear of 3-wall court. Minimum 20' overhead clearance.	Long axis north-south. Front wall at north end.	1 per 20,000	15-30 minute travel time	4-wall usually indoor as part of multi-purpose facility. 3-wall usually outdoor in park or school setting.
Ice Hockey	22,000 sq. ft. including support area.	Rink 85' x 200' (minimum 85' x 185'. Addition 5000 sq. ft. support area).	Long axis north-south if outdoors.	Indoor- 1 per 100,000 Outdoor- Depends on climate	½ - 1 hour travel time	Climate important consideration affecting number of units. Best as part of multi-purpose facility.
Tennis	Minimum of 7,200 sq. ft. single court. (2 acres for complex.)	36' x 78'. 12' clearance on both sides; 21' clearance on both ends.	Long axis north-south.	1 court per 2000	¼ - ½ mile	Best in batteries of 2-4. Located in neighborhood/ community park or near school site.
Volleyball	Minimum of 4,000 sq. ft.	30' x 60'. Minimum 6' clearance on all sides.	Long axis north-south	1 court per 5000	½ - 1 mile	Same as other court activities (e.g., badminton, basketball, etc.).

NATIONAL PARK AND RECREATION ASSOCIATION
Suggested Facility Development Standards

Activity/Facility	Recommended Space Requirements	Recommended size and dimensions	Recommended orientation	No. of units per population	Service Radius	Location Notes
Baseball 3. Official 4. Little League	3.0-3.85 A minimum	<ul style="list-style-type: none"> • Baselines-90' Pitching distance-60.5' Foul lines-min. 320' Center field-400' + • Baselines-60' Pitching distance-46' Foul lines-200' Center field-200'-250' 	Locate home plate so pitcher throwing across sun and batter not facing it. Line from home plate through pitcher-s mound to run east-northeast.	1 per 5000 Lighted-1 per 30,000	¼ - ½ mile	Part of neighborhood complex. Lighted fields part of community complex.
	1.2 A minimum					
Field Hockey	Minimum 1.5A	180' x 300' with a minimum of 10' clearance on all sides.	Fall season-long axis northwest to southeast. For longer periods, north to south.	1 per 20,000	15-30 minutes travel time	Usually part of baseball, football, or soccer complex in community park or adjacent to high school.
Football	Minimum 1.5A	160' x 360' with a minimum of 6' clearance on all sides.	Same as field hockey.	1 per 20,000	15-30 minutes travel time.	Same as field hockey.
Soccer	1.7 to 2.1 A	195' x 225' x 330' to 360', with a 10' minimum clearance on all sides.	Same as field hockey.	1 per 10,000	1-2 miles	Number of units depends on popularity. Youth soccer on smaller fields adjacent to schools or neighborhood parks.
Golf-driving range	13.5 A for minimum of 25 tees	900' x 690' wide. Add 12' width for each additional tee.	Long axis southwest/northeast with golfer driving toward northeast.	1 per 50,000	30 minutes travel time.	Part of golf course complex as a separate unit. May be privately operated.
¼ - Mile Running Track	4.3 A	Overall width - 276' Length - 600' Track width for 8 to 4 lanes is 32'.	Long axis in sector from north to south to northwest/southeast with finish line at northerly end.	1 per 20,000	15-30 minutes travel time.	Usually part of high school or community park complex in combination with football, soccer, etc.

NATIONAL PARK AND RECREATION ASSOCIATION
Suggested Facility Development Standards

Activity/Facility	Recommended Space Requirements	Recommended size and dimensions	Recommended orientation	No. of units per population	Service Radius	Location Notes
Softball	1.5 t 2.0 A	Baselines-60' Pitching distance -45' (men), -40' (women). Fast pitch field radius from plate – 225' between foul lines. Slow pitch -275' (men) -250' (women)	Same as baseball.	1 per 5,000 (if also used for youth baseball)	¼ - to ½ mile	Slight difference in dimensions for 16" slow pitch. May also be used for youth baseball.
Multiple Recreation Court (Basketball, Volleyball, Tennis)	9.840 sq. ft.	120' x 80'	Long axis of courts with primary use north-south	1 per 10,000	1 – 2 miles	In neighborhood or community parks.
Trails	N/A	Well defined head. Capacity- Rural trails – 40 hikers/day/mile. Urban trails – 90 hikers/day/mile.	N/A	1 system per region	N/A	
Archery Range	Minimum 0.65 A	300' length x minimum 10' between targets. Roped clear space on sides of range. Minimum of 30' clear space behind targets. Minimum of 90' x 45' with bunker.	Archer facing north + or + 45 degrees.	1 per 50,000	30 minutes travel time	Part of a regional/ metro park complex.

NATIONAL PARK AND RECREATION ASSOCIATION
Suggested Facility Development Standards

Activity/Facility	Recommended Space Requirements	Recommended size and dimensions	Recommended orientation	No. of units per population	Service Radius	Location Notes
Combination Skeet and Trap Field (8 station)	Minimum 30 A	All walks and structures occur within an area approximately 130' wide by 115' deep. Minimum cleared area is contained within two superimposed segments with 100-yard radii (4 acres). Shot-fall danger zone is contained within two superimposed segments with 300-yard radii (36 acres).	Center line of length runs northeast/southwest with shooter facing northeast	1 per 50,000	30 minutes travel time	Part of a regional/ metro park complex.
Golf 4. Par 3 (18-hole) 5. 9-hole standard 6. 18-hole standard	• 50-60 A	• Average length varies- 600-2700 yards.	Majority of holes on north-south axis.	• --	½ to 1 hour travel time	9-hole course can accommodate 350 people per day. 18-hole course can accommodate 500-550 people per day. Course may be located in community park or school site.
	• Minimum 50 A	• Average length 2250 yards.		• 1/25,000		
	• Minimum 110 A	• Average length 6500 yards.		• 1/50,000		
Swimming Pools	Varies on size of pool and amenities. Usually 1 to 2 A site.	Teaching-minimum of 25 yards x 45' even depth of 3 to 4 feet. Competitive-minimum of 25m x 16m. Minimum of 27 square feet of water surface per swimmer. Ratio of 2:1 deck vs. water.	None-although care must be taken in sighting of lifeguard stations in relation to afternoon sun.	1 per 20,000 (Pools should accommodate 3% to 5% of the total population at a time.)	15 to 30 minutes travel time	Pools for general community use should be planned for teaching, competitive, and recreational purposes with enough depth to accommodate 1 m and 3m diving boards. Located in community park or school site.

NATIONAL PARK AND RECREATION ASSOCIATION
Suggested Facility Development Standards

Activity/Facility	Recommended Space Requirements	Recommended size and dimensions	Recommended orientation	No. of units per population	Service Radius	Location Notes
Beach Areas	N/A	Beach area should have 50 sq. ft. of land and 50 sq. ft. of water per user. Turnover rate is 3. There should be 3-4 A supporting land per A of beach.	N/A	N/A	½ to 1 hour travel time	Should have sand bottom with slope a maximum of 5 % (flat preferable). Boating areas completely segregated from swimming areas. In regional/ metro parks.

Adapted from:

Lancaster, R.A., Ed. Recreation, Park and Open Space Standards and Guidelines. Alexandria, VA: National Recreation and Park Association, 1983.

Mertes, J.D. and J.R. Hall. Park, Recreation, Open Space and Greenway Guidelines. Alexandria, VA: National Recreation and Park Association, 1995.

APPENDIX C

NATIONAL PARK AND RECREATION ASSOCIATION RECOMMENDED CLASSIFICATION SYSTEM FOR LOCAL AND REGIONAL RECREATION OPEN SPACE AND TRAILS

**NATIONAL PARK AND RECREATION ASSOCIATION
RECOMMENDED CLASSIFICATION SYSTEM FOR LOCAL AND REGIONAL RECREATION OPEN SPACE AND TRAILS**

Classification	General Description	Location Criteria	Size Criteria
Mini-Park	Used to address limited, isolated or unique recreational needs.	Less than ¼ mile distance in residential setting.	Between 2500 sq. ft. and one acre in size.
Neighborhood Park	Neighborhood park remains the basic unit of the park system and serves as the recreational and social focus of the neighborhood. Focus is on informal active and passive recreation.	¼ - to ½ -mile distance and uninterrupted by non-residential roads and other physical barriers.	5 acres is considered minimum size. 5 to 10 acres is optimal.
School-Park	Depending on circumstances, combining parks with school sites can fulfill the space requirements for other classes of parks, such as neighborhood, community, sports complex and special use.	Determine by location of school district property.	Variable-depends on function.
Community Park	Serves broader purpose than neighborhood park. Focus is on meeting community-based recreation needs, as well as preserving unique landscapes and open spaces.	Determined by the quality and suitability of the site. Usually serves two or more neighborhoods and ½ to 3 mile distance.	As needed to accommodate desired uses. Usually between 30 and 50 acres.
Large Urban Park	Large urban parks serve a broader purpose than community parks and are used when community and neighborhood parks are not adequate to serve the needs of the community. Focus is on meeting community-based recreational needs, as well as preserving unique landscapes and open spaces.	Determined by the quality and suitability of the site. Usually serves the entire community.	As needed to accommodate desired uses. Usually a minimum of 50 acres, with 75 or more acres being optimal.
Natural Resource Areas	Lands set aside for preservation of significant natural resources, remnant landscapes, open space, and visual aesthetics/buffering.	Resource availability and opportunity.	Variable.
Greenways	Effectively tie park system components together to form a continuous park environment.	Resource availability and opportunity.	Variable.
Sports Complex	Consolidates heavily programmed athletic fields and associated facilities to larger and fewer sites	Strategically located community-wide facilities.	Determined by projected demand. Usually a minimum of 25 acres,

**NATIONAL PARK AND RECREATION ASSOCIATION
RECOMMENDED CLASSIFICATION SYSTEM FOR LOCAL AND REGIONAL RECREATION OPEN SPACE AND TRAILS**

Classification	General Description	Location Criteria	Size Criteria
	strategically located throughout the community.		with 40 to 80 acres being optimal.
Special Use	Covers a broad range of parks and recreation facilities oriented toward single- purpose use.	Variable-dependent on specific use.	Variable.
Private Park/Recreation Facility	Parks and recreation facilities that are privately owned yet contribute to the public park and recreation system.	Variable-dependent on specific use.	Variable.
Park Trail	Multipurpose trails located within greenways, parks and natural resource areas. Focus is on recreational value and harmony with natural environment.	<ul style="list-style-type: none"> • Type I: Separate/single-purpose hard-surfaced trails for pedestrians or bicyclists/ in-line skaters. • Type II: Multipurpose hard-surfaced trails for pedestrians and bicyclists/ in-line skaters. • Type III: Nature trails for pedestrians. May be hard- or soft-surfaced. 	
Connector Trails	Multipurpose trails that emphasize safe travel for pedestrians to and from parks and around the community. Focus is on recreational value and harmony with natural environment.	<ul style="list-style-type: none"> • Type I: Separate/single-purpose hard-surfaced trails for pedestrians or bicyclists/in-line skaters <u>located in independent r.o.w. (e.g., old railroad r.o.w.).</u> • Type II: Separate/single-purpose hard-surfaced trails for pedestrians or bicyclists/in-line skaters. <u>Typically located within road r.o.w.</u> 	
On-Street Bikeways	Paved segments of roadways that serve as a means to safely separate bicyclists from vehicular traffic.	<p>Bike Route: Designated portions of the roadway for the preferential or exclusive use of bicyclists.</p> <p>Bike Lane: Shared portions of the roadway that provide separation between motor vehicles and bicyclists, such as paved shoulders.</p>	
All-Terrain Bike Trail	Off-road trail for all-terrain (mountain) bikes.	Single-purpose loop trails usually located in larger parks and natural resource areas.	
Cross-Country Ski Trail	Trails developed for traditional and skate-style cross-country skiing.	Loop trails usually located in larger parks and natural resource areas.	
Equestrian Trail	Trails developed for horseback riding.	Loop trails usually located in larger parks and natural resource areas.	

**NATIONAL PARK AND RECREATION ASSOCIATION
RECOMMENDED CLASSIFICATION SYSTEM FOR LOCAL AND REGIONAL RECREATION OPEN SPACE AND TRAILS**

Classification	General Description	Location Criteria	Size Criteria
		Sometimes developed as multipurpose with hiking and all-terrain biking where conflicts can be controlled.	

Adapted from:

Lancaster, R.A., Ed. Recreation, Park and Open Space Standards and Guidelines. Alexandria, VA: National Recreation and Park Association, 1983.

Mertes, J.D. and J.R. Hall. Park, Recreation, Open Space and Greenway Guidelines. Alexandria, VA: National Recreation and Park Association, 1995.

APPENDIX D

NATIONAL PARK AND RECREATION ASSOCIATION STANDARDS FOR PARK ACREAGE

NATIONAL PARK AND RECREATION ASSOCIATION Standards for Park Acreage					
Component	Use	Service Area	Desirable Size	Acres/1,000 Population	Desirable Size Characteristics
Mini-park	Specialized facilities that serve a concentrated or limited population or specific group, such as tots or senior citizens	Less than ¼ miles radius	1 acre or less	0.25 to 0.5 A	With neighborhoods in close proximity to apartment complexes, townhouse development or housing for the elderly.
Neighborhood Park or Playground	Area for intense recreational activities, such as field games, crafts, playground apparatus areas, skating, picnicking, wading pools, etc.	¼ to ½ mile radius to serve a population up to 5,000 (a neighborhood)	15 + acres	1.0 to 2.0 A	Suited for intense development. Easily accessible to neighborhood population (geographically centered for safe walking and biking access). May be developed as a school park facility.
Community Park	Area of diverse environmental quality. May include areas suited for intense recreation facilities, such as athletic complexes, large swimming pools. May be an area of natural quality for outdoor recreation, such as walking, viewing, sitting, picnicking. May be any combination of the above, depending upon site suitability and community need.	1 to 2 mile radius (several neighborhoods)	25 + acres	5.0 to 8.0 A	May include natural features, such as water bodies and areas suited for intense development. Easily accessible to neighborhood served.
Total Close-to-Home Space = 6.25 – 10.5 A/1,000					

APPENDIX E

BARRIER FREE ACCESSIBILITY REQUIREMENTS FOR PARKS

BARRIER FREE ACCESSIBILITY REQUIREMENTS FOR PARKS

Recreational areas, facilities, and programs play an important role in the life of the community; therefore it is essential that people with disabilities have an equal opportunity to enjoy these areas and any programs provided. Federal and state laws prohibit discrimination on the basis of disability, and these laws apply to parks and other recreation lands and programs controlled and operated by local units of government. The DNR has a strong commitment to barrier free recreational opportunities in our Department-managed programs and facilities. This commitment extends to those communities that receive recreation grants.

Under the state Utilization of Public Facilities by the Physically Limited Act (1966 PA 1, as amended) all public facilities, including improved areas used for recreation, must meet the barrier free design requirements contained in the state construction code. Under this act, the administration and enforcement related to barrier free design requirements are vested in the local or state government agency responsible for issuing a building permit. If the project does not require a building permit, administration and enforcement of barrier free design requirements are vested in the Department of Labor and Economic Growth.

Any request for an exception to the barrier free design requirements of the state construction code must be submitted to the Barrier Free Design Board, within the Department of Labor and Economic Growth (517-241-9300). The Barrier Free Design Board has the responsibility to receive, review, and process requests for exceptions to barrier free design specifications; require appropriate equivalent alternatives when exceptions are granted; and receive, process, and make recommendations for barrier free design rules.

Because the state construction code does not apply to many recreation facilities, it is essential that you also be aware of and understand the existing federal guidelines covering these types of facilities. In July 2004, the federal Architectural and Transportation Barriers Compliance Board (known as the Access Board) issued updated guidelines, entitled the Americans with Disabilities Act Accessibility Guidelines (ADAAG), for new or altered facilities covered by the Americans with Disabilities Act of 1990 (Public Law 101-336) or the Architectural Barriers Act of 1968 (Public Law 90-480). These guidelines should eventually be adopted as enforceable standards. Until that occurs, the existing ADAAG standards must be followed when the two conflict.

Included in the updated ADAAG are technical provisions for a number of types of recreation facilities, including play areas, amusement rides, boating facilities, fishing piers and platforms, golf courses, miniature golf courses, shooting facilities, swimming and wading pools, and spas. Technical provisions for these recreation facilities do not exist in the current AADAG. The Access Board has also proposed guidelines for sports facilities, trails, beaches, and picnic and camping areas. While none of these guidelines has yet been adopted as federal standards, they represent the best information available on developing barrier free recreation facilities and may be upheld in a court of law. Therefore, they should be referred to when designing new or renovated recreation facilities.

**APPENDIX F
PUBLIC INPUT**

FEBRUARY 8, 2001 TOWNSHIP BOARD DISCUSSION ON RECREATION PLANNING

- February 8, 2011 agenda
- Minutes of February 8, 2011 meeting

APRIL 25, 2011 PUBLIC MEETING DISCUSSION ON UPDATING THE RECREATION PLAN

- Published advertisement in March 21, 2011 issue of the Mining Journal
- Minutes of March 25, 2011 meeting
- Written comments received

JUNE 14, 2011 PUBLIC HEARING ON THE RECREATION PLAN

- Published public hearing notice in May 9, 2011 issue of the Mining Journal
- Minutes of June 14, 2011 meeting

JULY 12, 2011 TOWNSHIP BOARD ADOPTION OF RECREATION PLAN

- Minutes of July 12, 2011 meeting

SANDS TOWNSHIP
REGULAR MEETING
SANDS TOWNSHIP OFFICE COMPLEX
February 8, 2011

- A. **CALL TO ORDER:**
- B. **PLEDGE:**
- C. **ROLL CALL:**
- D. **SET/AMEND AGENDA:**
- E. **PUBLIC COMMENT: (3 min each) (20 min total)**
- F. **CONSENT AGENDA:**
 - 1. **TREASURER'S REPORT – 2/8/11**
 - 2. **APPROVE MINUTES - meeting of 1/11/1**
 - 3. **BUDGET REPORT-2/8/11**
 - 4. **APPROVE ACCOUNTS PAYABLE –**
- G. **COMMITTEE REPORTS:**
 - 1. **FIRE DEPARTMENT**
 - a. Fire Chief's Report
 - b.
 - 2. **AMBULANCE**
 - a. Ambulance coordinator report
 - b. EMP bill for supplies \$771.76
 - 3. **SUPERVISOR'S REPORT**
 - a.
 - b.
 - 4. **CLERK'S REPORT**
 - a.
 - b.
 - c.
 - 5. **LANDFILL**
 - a. Transfer Station –
 - b.
 - 6. **ZONING**
 - a. Report
 - b.
 - c.
 - 7. **LIBRARY**
 - a.
 - 8. **GROUNDWATER AND WELL TESTING**
 - a. Aquifer study update
 - b.
 - 9. **COUNCIL ON AGING**
 - a.
 - 10. **PARKS & RECREATION**
 - a. Progress summary –
 - 11. **PERSONNEL COMMITTEE**
 - a.

12. CEMETERY

a.

H. OLD BUSINESS:

- 1.
- 2.
- 3.

I. NEW BUSINESS

1. Wages and fees for fiscal yr 2011-2012
2. Supervisor appointment discussion
3. Application for employment

J. OTHER CORRESPONDENCE:

1. City Insurance
- 2.

K. PUBLIC COMMENT:

L. ADJOURNMENT:

**SANDS TOWNSHIP REGULAR MEETING
SANDS TOWNSHIP OFFICE COMPLEX
FEBRUARY 8, 2011**

A. CALL TO ORDER – 7:08 PM by Clerk D. Kallio

B. PLEDGE OF ALLEGIANCE

C. ROLL CALL: David Kallio, Joe Wixtrom, Cheryl Schram, and Darlene Walch.

Employees in Attendance: Bill Kapeller, Rickey & Becky Wilson, Jane Noe, Randy Yelle, Brian Mann, Frank Rosado, Lee Yelle, and Ben & Angela Yelle.

PUBLIC IN ATTENDANCE: Jim Noe, Jo Kapeller, Jim & Barb Kidder, Walt & Dawn Aho, Karen & Doug Chandler, Roni Yelle, Kay & Harold Wagner, Ken Contois, Ross Olsen, Pam Fjeldheim, and Debby Muskovitch.

D. Kallio requested a motion to appoint a chairperson be presented. C. Schram motioned, D. Walch supported to appoint J. Wixtrom as chairperson. Ayes: 4 Nays: 0 Motion carried.

D. AGENDA: C. Schram motioned, D. Walch supported, to accept agenda with addition of letter from Marquette Co. Board of Commissioners. Ayes: 4 Nays: 0 Motion carried.

E. PUBLIC COMMENT: None

F. CONSENT AGENDA:

1. TREASURER'S REPORT - General Fund \$322,098.19 Trust & Agency \$63.00

Fire Fund \$57,076.26 Ambulance Fund \$46,747.23 Parks/Rec \$45,366.72 Sanitation \$45,363.17

Taxes \$59,894.74 Road Repair Fund \$358,262.14 Capital Projects \$5,630.20

C.D TOTALS: Ambulance \$174,032.23 Roads \$324,546.21 Fire Dept \$49,004.05 General Fund \$519,173.78.

Money Markets: Fire \$56,449.92 Cemetery Perpetual Care \$4,767.24 Road Repair Fund \$90,355.36

C. Schram reported that she is waiting for a response for CD rates from the agencies contacted, and should be able to have figures at the next meeting.

2. APPROVE MINUTES: D. Walch motioned, C. Schram supported, to approve minutes of 1/11/11 as presented. Ayes: 4 Nays: 0 Motion carried.

3. BUDGET REPORT: D. Kallio reported that legislative line item is under funded at this time, and this is the first amendment needed, for this fiscal year. C. Schram motioned, D. Walch supported to approve amending the budget by taking \$3,000 from contingency and placing the \$3,000 in legislative. Ayes: 4 Nays: 0 Motion carried.

4. APPROVE ACCOUNTS PAYABLE: C. Schram motioned, D. Kallio supported, to approve accounts payable as presented; General Fund checks # 26630 - # 26705 and Tax Collection checks #2510 - #2527. Ayes: 4 Nays: 0 Motion carried.

G. COMMITTEE REPORTS:

1. FIRE DEPARTMENT

Fire Chief's report- Chief Rickey Wilson read report.

a. J. Wixtrom motioned, C. Schram supported, to accept the fire report and place on file. Ayes: 4 Nays: 0 Motion carried.

b. D. Kallio motioned, J. Wixtrom supported, to approve the recommendation from Fire Chief R. Wilson to dismiss Bill Woods, due to his moving from area, without prejudice from the fire department. Ayes: 4 Nays: 0 Motion carried.

2. AMBULANCE:

a. Frank Rosado reported all is well with the ambulance department.

b. J. Wixtrom motioned, D. Walch supported, to approve payment of \$771.76 to EMP for ambulance supplies. Ayes: 4 Nays: 0 Motion carried.

3. SUPERVISOR'S REPORT-

a. A copy of a letter from Marquette County Board of Commissioners regarding CR 595 was presented. No action needed, none taken.

4. CLERK'S REPORT-

a. No report

5. LANDFILL-

a. No report

6. ZONING-

a. Randy Yelle gave report.

7. LIBRARY- No report

8. GROUNDWATER AND WELL TESTING- Jim Noe, reported that he, D. Kallio, and R. Wilson had a meeting with North Jackson Company. Information regarding available computer programming that could set up spread sheets from existing data the township has collected over the past 30 or so years regarding the wells was presented. Additionally, having the current data correlated and reports generated would better represent the township in the event the township had to address litigation. There are programs that would enable the township to look into a system of study on water quality. D. Kallio reported on concerns in regards to possible elevated selenium levels and other possible contaminates. Having that type of data in a format that could compare current data with the U.S Geological survey report that was prepared by Grannemann in the 80's would be of great value to the township. At the meeting it was also discussed that Rickey would be able to use the reportable data for seeking the 2% grant monies. After a discussion regarding well testing, C. Schram motioned, D. Walch supported to approve D. Kallio contacting DEQ for gathering information regarding testing some of the monitoring wells within the township for selenium levels. Ayes: 4 Nays: 0 Motion carried.

9. COMMISSION ON AGING- Lee Yelle gave report.

10. PARKS & RECREATION COMMITTEE- D. Kallio reported on the need for the Recreation Plan to be updated in order to qualify for any land trust grants.

11. PERSONNEL COMMITTEE- No report.

12. CEMETERY- No report

H. OLD BUSINESS- None

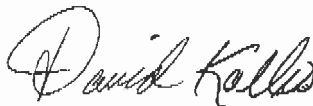
I. NEW BUSINESS –

1. Wages and fees for fiscal year 2011-2012: D. Kallio recommended that the wages and fees be maintained at their current level due to the uncertainty of the state revenue sharing amounts. D. Walch motioned, C. Schram supported, to approve keeping the 2011-2012 wages and fees the same as the previous year as presented. Ayes: 4 Nays: 0 Motion carried.
2. Appointment of Supervisor: There was lengthy discussion regarding the two candidates who had expressed an interest in filling the position. Those two candidates were David Kallio, current Clerk, and Karen Chandler, a resident interested in filling the position. Chair J. Wixtrom called for a 15 minute recess at 8:00 pm. At 8:15, meeting reconvened. After further discussion, C. Schram motioned to appoint Karen Chandler as Supervisor. There was no second to the motion. Motion died for lack of support. J. Wixtrom motioned, D. Walch supported to appoint David Kallio as Supervisor. Then, J. Wixtrom requested Clerk D. Kallio to leave the table area and join the audience. There was further discussion. Chair J. Wixtrom asked for a Roll Call vote to the motion on the floor: J. Wixtrom – yes, D. Walch –yes, C. Schram –yes. Motion approved. D. Kallio returned to table area. D. Kallio presented a letter of resignation from the Clerk's position. C. Schram motioned, D. Walch supported to accept the letter of resignation from D. Kallio. Ayes: 3 Nays: 0 Motion carried.
The Oath of Office for the Supervisor position was administered to David Kallio by Notary, Lee Yelle. The Clerk vacancy was addressed: D. Kallio motioned, J. Wixtrom supported to appoint Lee Yelle as Clerk. Roll Call vote: D. Walch –yes, C. Schram –yes, J. Wixtrom – yes, D. Kallio –yes. Motion approved.
3. Application for employment: C. Schram motioned, D. Walch supported to accept the application from Carl Johnson for a position on the garbage truck. Ayes: 4 Nays: 0 Motion carried.
4. C. Schram motioned, D. Kallio supported to have personnel committee publish an ad for the Administrative Assistant position. Ayes: 4 Nays: 0 Motion carried.
5. C. Schram motioned, J. Wixtrom supported to hold the 2010-2011 budget hearing on March 8th at 7pm. Ayes: 4 Nays: 0 Motion carried.
6. Zoning Administrator Randy Yelle informed the board that due to the supervisor transition, there will need to be a new appointment to the Zoning Board of Appeals. D. Kallio motioned, J. Wixtrom supported to appoint D. Walch to the Zoning Board of Appeals. Ayes: 4 Nays: 0 Motion carried.

J. OTHER/ CORRESPONDENCE: D. Kallio informed the board that City Insurance has forwarded to the township information on supplemental insurance. If any of the members are so inclined to review the mailing, it is available in the Clerk's office.

K. PUBLIC COMMENT: Karen Chandler gave a thank you to the board for considering her for the position and stated that Earl Yelle will be missed. Pam Feldjhaime voiced a thank you to Earl for the support given regarding the warming shed at the Blueberry Ridge ski trail and wants to keep the township board informed as progress is made.

L. ADJOURNMENT: C. Schram motioned, D. Walch supported to adjourn.
Ayes: 4 Nays: 0 Motion carried. Meeting adjourned at 8:55 p.m.


David Kallio
Clerk



Get Fit

with the right shoes from



Johnson's
Superior Shoes

1212 N. Third, Marquette • 226-2062

Marquette American Little League

ONLINE REGISTRATION

Teams Being Formed For The 2011 Season!
Register Now Thru March 31st!

www.marquettelittleleague.net

FOR FINANCIAL ASSISTANCE
CALL 250-0698 (Mike)

FOR REGISTRATION QUESTIONS
CALL 225-0153 (Janet)



SANDS TOWNSHIP OF MARQUETTE COUNTY PUBLIC MEETING NOTICE

The Sands Township Recreation Committee will hold a public meeting on Friday, March 25, 2011 at 6:30 pm at the Sands Township Hall, 987 State Hwy M-553, to receive input and suggestions on development of a 2011-2015 Sands Township Recreation Plan. Both oral and written comments will be accepted. All interested persons should plan to attend this meeting.

7 Days

Progress 2011 is coming

Don't miss the Monday March 28, 2011 Mining Journal

**Sands Township Parks and Recreation Committee
March 25, 2011
Township Office Complex
Meeting Minutes**

Present: David Kallio, Jennifer Wixtrom, Michelle Redlon, Sue Skutley, Pam Fjeldheim, Jennifer Cihak, Debby Muskovitz, Zeb Johnston, Carol Johnston, Judd Johnston, Brian Brozak, Ron Skutley

Meeting called to order at 6:37pm

The purpose of tonight's meeting is to seek community input for the newest five year recreation plan for Sands Township 2011-2015.

Strawberry Lake: brief history of the property discussed as was the need for an on sight caretaker. There have been some interested parties seeking to live and be caretaker of the property and cottage for the May-October 2011 season. There is much interest in upgrading the lake in the form of creating a place for swimming (possibly dredging the lake and bringing in sand), building a boardwalk/dock, and upgrades to the cottage.

Gym: A letter was submitted by Peter Redlon addressing his interest in having scheduled open gym times on a routine basis and having it staffed. Other citizens supported this idea and there was a lengthy discussion about some of the problems that could arise as in the past (mixed age groups showing up at the same time, people wanting to utilize different equipment..etc) The PRC will continue to discuss this and will come up with a proposed schedule for the 2011-2012 season. There was also a suggestion to utilize NMU students in the recreation programs that may want to lead some activities and possibly staff the gym.

Property for trails-fit strip: There is overwhelming support for having a walking/hiking trail in the township. There are a few possibilities for land acquisition to make a substantial trail adjacent or in close proximity to the township park. It was also suggested that we investigate the possibility of using the Blueberry Ridge Trails as a location for fitness stations which would better utilize the resources of both the township and the state.

Warming Shelter for Blueberry Ridge on township property/DNR Land Sands

Township: There was a letter submitted by Shawn and Danielle Sitar in support of the construction of a warming shelter for BBR.

There was a discussion about the history thus far in the attempt to have such a shelter constructed and the friends of blueberry ridge are seeking the cooperative assistance of the township recreation committee and board to realize this project. The recreation committee would like to incorporate this, as well as possibly the fitness stations at BBR into the new recreation plan. The step by step process of updating the recreation plan and adoption of the plan by the Sands Township board was presented and discussed.

Other Recommendations for improvements: Lighting for the park was discussed briefly and it was decided that it is a low priority at this time and having the park open during seasonal daylight hours seems to be sufficient.

The addition of a tennis backboard is an interest as is having some directed tennis lesson/day camp for kids.

There was interest in having a township block party to familiarize the township not only with each other, but with all the recreation facilities the township has to offer. The recreation committee will discuss possible dates and will submit the information to the township for the annual newsletter.

Meeting was adjourned at 8pm

Respectfully Submitted by,
Michelle Redlon, PRC Secretary

25 March 2011

Open gym time at the Sands Twp. Gym

To: Recreation committee

Dear Sands Twp. Recreation committee and board. We need to reinstate the open gym times at the Twp. Gym.

"Open gym times " were a point used to rally for the millage proposal, which did indeed pass in part because of the proposed open gym scheduling possibilities.

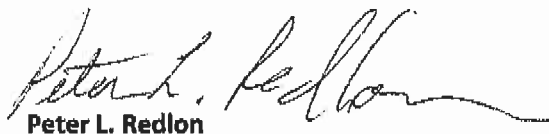
The people pay these taxes annually and have access to only a select few areas (i.e. exterior courts, playground, gazebo and restrooms) on a seasonal basis.

Although an attempt was made initially to open the gym on a routine basis, it was frequently closed due to lack of staffing. This resulted in people not being able to rely on the posted times which further resulted in low attendance. Part of the reasoning behind discontinuing the open gym times was lack of attendance. Lack of attendance should not be a reason to stop opening the gym to the general public. Not nearly enough time and notification was given to this effort.

I would like to suggest that we consider weekly or even bi-weekly opening of the gym. It could be something like "every first and third Wednesday of the month from 6PM to 8PM" And can never be superseded by a rental.

I would further suggest that numerous staff be trained to open and close the gym properly. And that those numerous staff members would collectively be able to consistently open the gym for months and years so that a routine would be established in the memories of the Sands citizens no different than the knowledge that the Sands Transfer Station is available on the 2nd and 4th Saturdays of the month.

It is crucial that this issue is taken under serious consideration given how quickly our children grow up.



Peter L. Redlon

184 Station Rd.

346-9956

125 Yelle Rd
Sands, MI 49841
24 March 2011

David Kallio
Sands Township Supervisor
987 State Highway M-553
Gwinn, MI 49841

Dear Mr. Kallio:

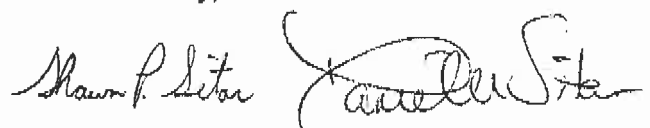
We are writing to ask you to support the ongoing efforts to develop a warming facility at the Blueberry Ridge Ski Trail system (BBR), and to incorporate BBR into the Sands Township Recreation Plan. We feel that Sands Township and its citizens have a stake in BBR because:

- Blueberry Ridge Ski trail is a constant draw for recreationists into our township and provides both economic and social benefits to Sands.
- Any investment by Sands Township into BBR would yield greater benefits than our investment. It would not be a financial burden because it would be supported by the State of Michigan and concerned user groups.
- It encourages healthy living through recreation and fitness and promotes appreciation of the great outdoors in our township.

The long-overdue warming facility at BBR would enhance the outdoor experience for skiers and skiing families. When kids get cold and have a miserable time, they are less apt to want to come back. The warming facility would help kids enjoy skiing at BBR. If they have a good cross country skiing experience, then will enhance appreciation of the outdoors. There are many reasons why a warming facility at BBR is a good thing for Sands Township, but at the minimum, the township should consider the warming facility as ^a safety feature.

We love skiing at BBR and it is one of the reasons we live in Sands Township (no kidding), and there are probably others that have moved here for the same reason. We thank you for working hard to take care of our township and we believe that supporting BBR would benefit Sands Township residents, businesses, and the extended community.

Sincerely,



Shawn and Danielle Sitar
Sands Township, MI

Etcetera

Lawsuits challenge new wolf | Pothole on the docket at Michigan Supreme Court

Veith will feel more comfortable in her position now that the interim tag has been removed.

"I think the confidence level is a big thing," he said. "People know who the superintendent is now."

The original timeline called for the new superintendent to take the district reins on July 1, but Retaskie said the official transition should happen much sooner than that with Veith.

Trustee Mark Smith cast the lone vote opposing the motion to hire Veith. Though Smith was satisfied with the result of the search, he said he was not completely happy with the process, which was facilitated by North Star Staffing, an external firm hired in February to conduct the search at a cost of \$5,800.

After interviewing each of the finalists for 90 minutes on Friday and Saturday, the board immediately entered into discussions about who to hire. Smith said he was hoping to have more time to evaluate the finalists.

"The point I made at the meeting several times is that it was a challenge for me as a board member ... to know as much about the background of the other

Sands Township Public Hearing Notice Recreation Plan Review

The Sands Township Recreation Committee has prepared a draft of the 2011-2015 Sands Township Recreation Plan. The Plan identifies possible recreation projects to be undertaken in the coming years. A copy of the Plan is available for public review at the Sands Township Hall, 987 State Hwy. M-553 (906-249-9169) during normal business hours.

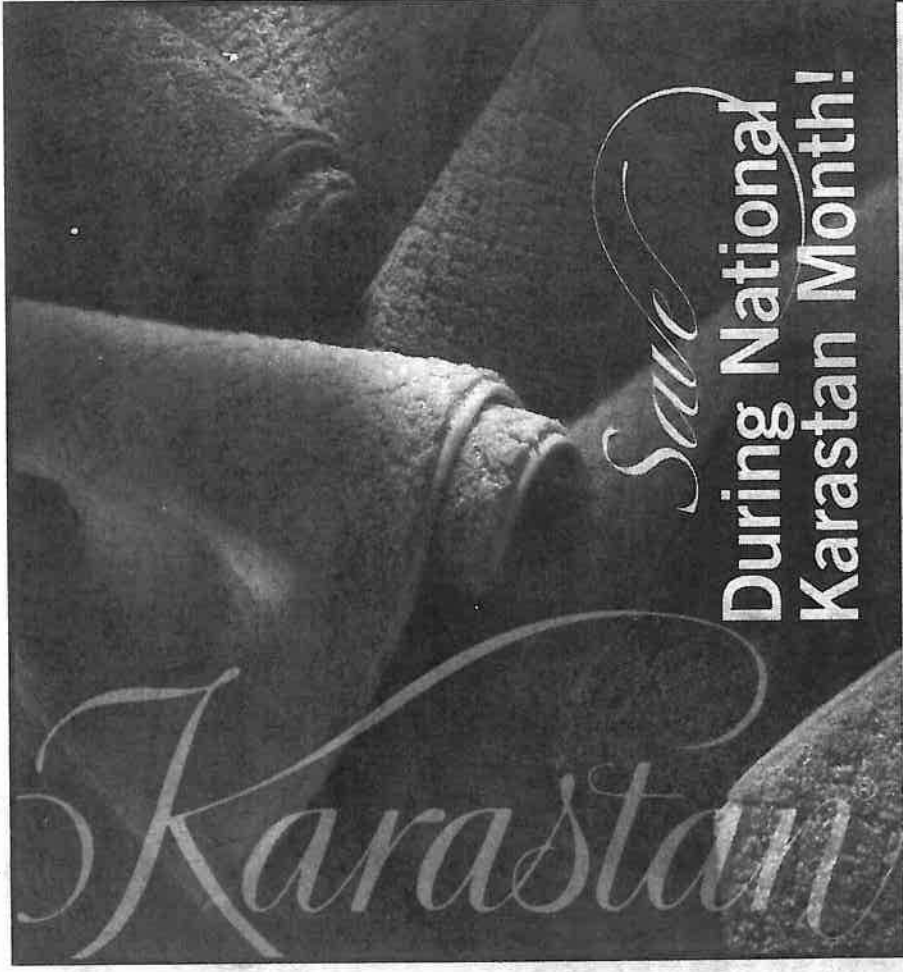
The Township Board will hold a Public Hearing at their regular meeting on June 14, 2011 at 7:00 p.m. at the Sands Township Hall to receive comments on the draft Recreation Plan. Both oral and written comments will be accepted. All interested persons should plan to attend this meeting. Following the Public Hearing, the Township Board will discuss the comments received and take formal action on the plan.

Lee Yelle, Township Clerk

**MUFFLERS
BRAKES
BATTERIES
SHOCKS**

**We'll... ✓ pick up
your car**

✓ fix it



Karastan

Save

**During National
Karastan Month!**

**SAVE
NOW!**

SANDS TOWNSHIP REGULAR MEETING
SANDS TOWNSHIP OFFICE COMPLEX
June 14, 2011

A. CALL TO ORDER – 7:08 PM by David Kallio

B. PLEDGE OF ALLEGIANCE

C. ROLL CALL: David Kallio, Cheryl Schram, Darlene Walch, Lee Yelle, Joe Wixtrom, arrived at 7:35. Employees in Attendance: Rickey Wilson, Jim Noe, Randy Yelle, April Ellis, Ben & Angela Yelle, Brian Mann, and Carolyn Sironen.

PUBLIC IN ATTENDANCE: Jo Kapeller, Deborah Mulcahey, Gary & Laverne White, Barb Kidder, Ross Olsen, Pam Fjeldheim, Shawn Sitar, Carol Johnston, Jenny Chiak, and Nancy Olsen.

D. AGENDA: L. Yelle motioned, D. Walch supported, to accept agenda with additions under J.2.b Ambulance service at Sawyer, J.3.b. Appointment of Solid Waste Authority member, and J.8.b. North Jackson contract. Ayes: 4 Nays: 0 Motion carried.

E. PUBLIC COMMENT: None.

F. OPEN PUBLIC HEARING: D. Kallio declared the Public Hearing for Recreation Plan Review open at 7:11 There was discussion regarding suggested amendments and corrections.

G. PUBLIC COMMENT- No comments from the public

H. CLOSE PUBLIC HEARING: D. Kallio declared Public Hearing closed at 7:20.

I. CONSENT AGENDA:

1. TREASURER'S REPORT - General Fund \$190,617.23 Trust & Agency \$63.00

Fire Fund \$38,920.46 Ambulance Fund \$24,102.42 Parks/Rec \$53,491.35 Sanitation \$60,539.10

Taxes \$1,024.58 Road Repair \$345,798.42 Capital Projects \$5,634.83

C.D TOTALS: Ambulance \$199,631.50 Road Repair Fund \$325,324.20 Fire Dept \$49,067.18

General Fund \$672,267.13

Money Markets: Fire \$83,713.42 Cemetery Perpetual Care \$4,769.04 Road Repair Fund \$140,522.83

C. Schram presented information regarding the joint ad for notice of summer deferment on taxes. C. Schram motioned, L. Yelle supported to approve participating in the County-wide ad for the notice regarding summer tax deferment. Ayes: 4 Nays: 0 Motion carried.

2. APPROVE MINUTES: D. Kallio motioned, C. Schram supported, to approve minutes of 5/10/11 meeting as presented. Ayes: 4 Nays: 0 Motion carried.

3. BUDGET REPORT: L. Yelle presented the budget v/s actual for the general, ambulance, fire, sanitation, parks & rec., and road revenues, and balance sheet as of May 31, 2011.

4. APPROVE ACCOUNTS PAYABLE: The general ledger was presented. L. Yelle motioned, D. Walch supported, to approve payment of checks as presented; General Fund checks # 26948 - # 27039, and Tax Collection checks #2564 - #2569. Ayes: 4 Nays: 0 Motion carried.

J. COMMITTEE REPORTS:

1. FIRE DEPARTMENT

Fire Chief's report- Rickey Wilson gave report. Report submitted and placed on file.

a. D. Kallio motioned, L. Yelle supported to approve the purchase of paint and supplies in the amount of \$197.97 and approve members painting station #2, and the purchase of a power washer for approximately \$250. Ayes: 4 Nays: 0 Motion carried.

b. Proposal for drain system at Station #2 was presented. D. Walch motioned, C. Schram supported to approve the installation of a 1,600 gallon septic tank at the cost of \$2,750 by LaJeunesse Trucking & Excavating. Ayes: 4 Nays: 0 Motion carried.

- c. D. Kallio motioned, L. Yelle supported to approve the fire department taking the 1938 Dodge fire truck to the Antique Auto Exhibit in Negaunee and to participate in the parades in Negaunee, Marquette and Ishpeming. Ayes: 4 Nays: 0 Motion carried.
 - d. Rickey Wilson requested permission to junk the 1962 International 6 X 6 grass rig for scrap. D. Kallio motioned, L. Yelle supported to approve selling the 1962 6 X 6 for scrap, with the funds going to the fire department auxiliary. Ayes: 4 Nays: 0 Motion carried.
2. **AMBULANCE:** Rickey Wilson reported on the stress that is being placed on the Sands Township EMS personnel due to the excessive need to cover for the Forsyth ambulance service, and the need to resolve the issue. C. Schram motioned, D. Walch supported to approve Rickey Wilson, Dave Kallio and Lyn Nelson requesting and having a joint meeting with Marquette County Commissioners Bill Nordeen and Bruce Heikkila, and Forsyth Township, to attempt to come up with a solution. Ayes: 4 Nays: 0 Motion carried.
3. **SUPERVISOR'S REPORT-**
- a. D. Kallio reported that the Quiet Title action is completed and the deed will be filed without the reversion clause and Sands Township will have no restrictions on the property. Now the board will have to consider what action will be taken to limit liability issues with the property.
 - b. D. Kallio made the recommendation to appoint Randy Yelle to the Solid Waste Authority. D. Kallio motioned, D. Walch supported to approve Randy Yelle as the new Chair, for the Solid Waste Authority. Ayes: 5 Nays: 0 Motion carried.
4. **CLERK'S REPORT-**
- a. L. Yelle reported that the 2010-2011 audit will begin July 6th.
 - b. Resolution #06142011 was presented for authorization of clerk and treasurer to pay essential bills. (Copy attached) Roll Call vote: D. Walch-yes, C. Schram-yes, D. Kallio-yes, J. Wixtrom-yes, L. Yelle-yes. D. Kallio declared resolution duly adopted.
 - c. A request for a sign at corner of Linda & Sicotte and Linda & Jack was made by a resident. After discussion, it was tabled until next meeting.
 - d. Insurance premium for 2011-2012 coverage with MML is \$15,611. C. Schram motioned, L. Yelle supported to approve payment of \$15,611 for insurance coverage with MML. Ayes: 5 Nays: 0 Motion carried.
5. **LANDFILL-**
- a. Bids for a new garbage truck were presented: Wisconsin Kenworth submitted a bid of \$91,930. Schultz Equipment & Parts Co submitted a bid of \$79,999. It was a consensus of the board to wait until the dollar amounts for the removal and placement of the packer on the new truck is obtained before making a final decision.
 - b. AECOM contract request. After discussion and review of the cost to enter into a contract with AECOM, it was a board consensus to not contract with AECOM for the transfer station improvements.
 - c. C. Schram motioned, D. Walch supported to approve contacting Cambensy for the building blueprints and bid package information and going with Mike Mileski for \$1,510 for the Site plan. Ayes: 5 Nays: 0 Motion carried.
6. **ZONING-** Randy Yelle presented zoning report. Report submitted and placed on file.

7. **LIBRARY-** C. Schram reported that there was a meeting June 1st. Report submitted and placed on file.

8. **GROUNDWATER AND WELL TESTING-**

a. D. Kallio reported that the township is in receipt of \$12,000 from the KBIC tribe 2% distribution dollars for the Sands Plain Aquifer project.

b. L. Yelle motioned, C. Schram supported to approve contracting with North Jackson Co. for the Web GIS and database for the hydrological monitoring database program for the Sands Plain Aquifer. Ayes: 5 Nays: 0 Motion carried.

(Initial payment of \$7,000 and a \$200 monthly access fee for the first 12 months with a charge of \$100 per month for basic user access and routine groundwater data level uploads, per forwarded email.)

9. **COMMISSION ON AGING-** Lee Yelle gave report.

10. **PARKS AND RECREATION COMMITTEE-**

a. Recreation Plan: Public hearing completed. No input from the public. Suggested corrections and updates were reviewed and considered. L. Yelle motioned, D. Walch supported to hold final approval of the draft recreation plan until CUPPAD has made suggested changes to the plan, with either a special meeting being called or addressed at the next meeting.

Roll Call vote: D. Walch-yes, C. Schram-yes, D. Kallio-yes, J. Wixtrom-yes, L. Yelle-yes.

b. Request to allow pickleball lines be painted on the tennis court.

D. Walch motioned, L. Yelle supported to approve the pickleball Club's request to paint lines on the existing tennis court, with club covering the cost. Ayes: 5 Nays: 0 Motion carried.

11. **PERSONNEL COMMITTEE-** No report

12. **CEMETERY-** No report

K. **OLD BUSINESS-**

1. None

L. **NEW BUSINESS –**

1. L. Yelle motioned, C. Schram supported to approve tentative approval of the newsletter, with board members reviewing and making contact with the clerk for final approval for newsletter to be published. Ayes: 5 Nays: 0 Motion carried.

- M. **OTHER/ CORRESPONDENCE:** ATC letter regarding clearing along electrical lines was received.

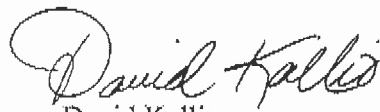
D. Kallio will contact the company to be assured that no hazardous chemicals will be used.

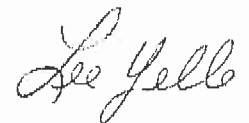
- N. **PUBLIC COMMENT:** Randy Yelle thanked Rickey Wilson for his input and information regarding the Solid Waste Authority board.

Deborah Mulcahey, representing the Citizens for the Betterment of Blueberry Ridge requested that the township consider moving forward to authorize discussions with the DNR and Marquette County, either through a deed or lease for obtaining land to build a warming hut.

After discussion, D. Walch motioned, D. Kallio supported to authorize Supervisor Dave Kallio to enter into discussions with the County and / or the DNR for the intent of investigating the possibilities of land acquisition. Ayes: 5 Nays: 0 Motion carried.

O. ADJOURNMENT: C. Schram motioned, L. Yelle supported, to adjourn.
Ayes: 5 Nays: 0 Motion carried. Meeting adjourned at 8:35 p.m.


David Kallio
Supervisor


Lee Yelle
Clerk

RECREATION PLAN REVIEW
SUGGESTED AMENDMENTS / CORRECTIONS

In Table 4-1 # 2. Township forest area 109 acres

4. Fairgrounds 196.5 acres

Possibly insert (not County owned)

6. Sandy should be changed to Sands and size addressed

8. Not consistent with rest of table

Table 4-3 heading: Not sure that Wells Township is correct. I think it should be Sands

In Table 4-4 Is CUPPAD inserting the needed information or is the Township or Rec. Committee to provide this information?

In section 6.1 Identified Needs: under **Blueberry Ridge Trail:**

Concerned with language as it implicates the township as having financial responsibility;
Strike Construct and change to **Help implement and support the construction of a
warming shelter/lodge;**

Table 6 #2 Reflective of suggested language in section 6.1

#4 Change to *Establish walking trail/fitness strip on township property or on state
owned properties such as the existing Blueberry Ridge ski trail.*

Recreation Plan Comments

Pg 6-9 - More information is available for 2010 census than when this was first written. I have all that information (CUPPAD will, too - easily accessed online). Most not a significant change.

Pg 6 - Gives 2000 info as the median age of residents is 36.1, lower than Mqt County. As of the 2010 census, the median age in Sands is 42, and Mqt County is 39.4. We are slightly higher - see attached age breakdown. This seems a significant change.

Pg 7 - It says per capital income, not per capita (2nd line - first word of paragraph beginning "In 1999" in middle of page).

Pg 12 - Last part of first sentence - ink raccoon? Do they mean to say mink and raccoon? There is no "and" to finish the list of mammals.

Pg 14/15 - No Accessibility Assessment Rating given like stated (need for Township owned facilities - #1, 2, 7, & 8).

Pg 15 - No size or length of Sandy/Gwinn Trail.

Pg 15 - #8 in the table (Township Gym/Office complex) is not shaded and does not say the number of acres. Should it say "an indoor recreational facility *is* located...?"

Pg 15 - Last paragraph - one MDNR grants? Should be singular grant.

Pg 16 - First paragraph - for development *of* a ballfield ...?

Pg 17 - Last paragraph - should *which* or other sort of word or grammar be inserted after NRPA to combine both parts of the sentence?

Pg 19 - Info on Acreage of Parks, etc. is needed.

Pg 19 - Says Wells Township(??) in last paragraph.

Pg 21 - Word trails is repeated in 3rd bullet under Township Recreation Area/Office Complex.

Pg 21 - Some items on bulleted lists have a period, others do not.

Pg 21 - Under Sands Plains, need comma after sled dog in first bullet.

Pg 22 - Under Year #1 project, it says "improve picnic and facilities and swimming area... Should it say "picnic *area* and facilities..." or "picnic ~~and~~ facilities and swimming area..."??

Pg 22 - Under Year #4 project, what is it connecting?

Sands Township Residents by Age, Compared with Statewide Average

Age Group	Number of Residents	% of Population	Average % of Marquette County	Difference of Sands and County	Average % of Michigan Population	Difference of Sands and State
Under 5 Years	121	5.3	5.2	+1	6.0	-.7
5-9	130	5.7	4.9	+.8	6.5	-.8
10-14	188	8.2	5.2	+3.0	6.8	+1.4
15-19	155	6.8	7.7	-.9	7.5	-.7
20-24	91	4.0	10.5	-6.5	6.8	-2.8
25-34	232	10.2	12.1	-1.9	11.8	-1.6
35-44	330	14.4	10.9	+3.5	12.9	+1.5
45-54	450	19.7	14.7	+5.0	15.3	+4.4
55-59	236	10.3	8.0	+2.3	6.9	+3.4
60-64	176	7.7	6.3	+1.4	5.8	+1.9
65-74	136	6.0	7.7	-1.7	7.3	+.7
75-84	33	1.4	4.8	-3.4	4.5	-3.1
85 Years +	7	.3	2.2	-1.9	1.9	-1.6

**SANDS TOWNSHIP REGULAR MEETING
SANDS TOWNSHIP OFFICE COMPLEX
JULY 12, 2011**

A. CALL TO ORDER – 7:00 PM by Supervisor D. Kallio

B. PLEDGE OF ALLEGIANCE

C. ROLL CALL: David Kallio, Joe Wixtrom, Cheryl Schram, and Darlene Walch, and Lee Yelle.

Employees in Attendance: Bill Kapeller, Jim & Jane Noe, Rickey Wilson, April Ellis, and Ben & Angela Yelle, Joelle Olsen.

PUBLIC IN ATTENDANCE: Jo Kapeller, Ross Olsen, Gary & Laverne White, Bruce Anderson, Doug Chandler, Nancy Olsen.

D. AGENDA: J. Wixtrom motioned, C. Schram supported, to accept agenda with additions under G1b. price of power washer increased to \$297 from \$250, G5e. Garbage complaint, G6b. purchase of computer generated maps for master plan, and G8b. meeting with CCI. Ayes: 5 Nays: 0 Motion carried.

E. PUBLIC COMMENT: None

F. CONSENT AGENDA:

1. TREASURER'S REPORT - General Fund \$189,031.10 **Trust & Agency** \$63.00

Fire Fund \$33,258.42 **Ambulance Fund** \$23,966.29 **Parks/Rec** \$51,682.76 **Sanitation** \$49,072.01

Taxes \$1,024.65 **Road Repair Fund** \$345,874.17 **Capital Projects** \$5,635.99

C.D TOTALS: **Ambulance** \$199,855.56 **Roads** \$325,324.20 **Fire Dept** \$49,067.18

General Fund \$672,866.34.

Money Markets: **Fire** \$83,786.81 **Cemetery Perpetual Care** \$4,769.63 **Road Repair Fund** \$140,636.34

C. Schram reported on the need to change procedure for tracking the expenditures and reimbursements regarding transactions on the MCSWMA bills. D. Kallio motioned, C. Schram supported to approve paying the temporary and authorized hauler charges on the MCSWMA bills out of the general fund instead of the sanitation fund, with this being retroactive as of April 1, 2011. Ayes: 5 Nays: 0 Motion carried.

2. APPROVE MINUTES: D. Walch motioned, L. Yelle supported, to approve minutes of 6/14/11 as presented. Ayes: 5 Nays: 0 Motion carried.

3. BUDGET REPORT: Budget report presented to board members. There was discussion regarding the action to take for funding the garbage truck and the improvements at the transfer station. C. Schram reported that there are CD's coming up for renewal in August and September. Other option is to possibly borrow from the road fund and repay as the CD's mature and are cashed in. The Clerk and Treasurer will check with the auditor on this issue.

4. APPROVE ACCOUNTS PAYABLE: L. Yelle motioned, J. Wixtrom supported, to approve accounts payable as presented; General Fund checks # 27040 - # 27135 Ayes: 5 Nays: 0 Motion carried.

G. COMMITTEE REPORTS:

1. FIRE DEPARTMENT

Fire Chief's report- Chief Rickey Wilson read report.

a. D. Kallio motioned, D. Walch supported, to accept the resignation without prejudice from the fire department from Gary Stevens. Ayes: 5 Nays: 0 Motion carried.

b. C. Schram motioned, L. Yelle supported to approve paying \$297 for the power washer which is an increase from the \$250 presented at last meeting. Ayes: 5 Nays: 0 Motion carried.

2. AMBULANCE:

a. R. Wilson reported he is still working on coordinating a joint meeting with Marquette County Commissioners and Forsyth Township.

b. L. Yelle motioned, J. Wixtrom supported to approve the purchase of batteries for the AED from PMI, \$137.41. Ayes: 5 Nays: 0 Motion carried.

3. SUPERVISOR'S REPORT-

a. D. Kallio reported that Sandy Redlon is requesting to step away from her position on the Board of Review, and he is recommending Dennis Grim be appointed to the Board of Review. L. Yelle motioned, J. Wixtrom supported to approve appointment of Dennis Grim to the Board of Review. Ayes: 5 Nays: 0 Motion carried.

4. CLERK'S REPORT-

a. L. Yelle reported that the IRS mileage reimbursement rate is at 55.5 ¢ per mile.

b. D. Kallio motioned, C. Schram supported to approve the extension of the METRO Act Permit that was approved in 2006. Ayes: 5 Nays: 0 Motion carried.

c. C. Schram motioned, D. Walch supported to approve paying CUPPAD yearly dues of \$425. Ayes: 5 Nays: 0 Motion carried.

d. D. Kallio motioned, L. Yelle supported to make the 6/15/11 phone query approval for the MTA dues of \$1,259.39 official. Ayes: 5 Nays: 0 Motion carried.

e. C. Schram motioned, L. Yelle supported to approve the \$150 expenditure to Spiffy Clean. Ayes: 5 Nays: 0 Motion carried.

f. D. Kallio motioned, C. Schram supported to approve the payment to Mqt. County Equalization bill of \$3,798.97. Ayes: 5 Nays: 0 Motion carried.

g. L. Yelle reported on the MTA webcast learning portal session, of which there was a \$25 charge.

h. There was discussion and questions regarding the townships course of action that can be taken on behalf of residents regarding cost and availability of service from Charter and AT&T and what latitude the franchise agreements give the township with Charter and AT&T. D. Kallio motioned, C. Schram supported to withhold the previous approval for the METRO Act until the August 9th meeting allowing board members to review agreements. Ayes: 5 Nays: 0 Motion carried.

5. LANDFILL-

a. C. Schram motioned, D. Kallio supported to approve paying GSI the additional \$600 for the boundary survey to the quoted \$1,510 bringing the total to \$2,110 for the transfer station site plan. Ayes: 5 Nays: 0 Motion carried.

b. L. Yelle motioned, D. Kallio supported to approve expenditure of \$6,581 for Crossroads Truck Repair to paint and transfer the packer to a new garbage truck once acquired. Ayes: 5 Nays: 0 Motion carried.

c. D. Kallio motioned, C. Schram supported to accept the bid of \$79,999 and \$6,024 for a 5 year extended warranty and \$1,438.40 for PTO & installation for a total package price of \$96,329.64 (which includes the \$6,581 charge for painting & transferring packer) for purchase of a 2012 7400 SBA6X4 International truck. Roll call vote: D. Walch-yes, C. Schram-yes, D. Kallio-yes, J. Wixtrom-yes, L. Yelle-yes. Motion carried.

- d. After discussion regarding improvements at the transfer station D. Walch motioned, C. Schram supported to authorize D. Kallio to contact Heidtman to have trees removed from building area with a cost of zero dollars, if done on Heidtman's time schedule or up to \$1,200 if a set time is to be established. Ayes: 5 Nays: 0 Motion carried.
- e. C. Schram motioned, D. Walch supported to approve hiring Bob's Septic for a cost of \$3,600 to remove stumps and brush once trees have been removed. Ayes: 5 Nays: 0 Motion carried.
- 6. **ZONING-** Randy presented report to the board members. Planning Commission will be reviewing Master Plan at their July 20th meeting. Request to have 12 colored copies of the Master Plan done at Office Max.
 - a. D. Kallio motioned, L. Yelle supported to approve the printing of 12 colored copies of the Master Plan for a total cost of \$411.60. Ayes: 5 Nays: 0 Motion carried.
- 7. **LIBRARY-** No report.
- 8. **GROUNDWATER AND WELL TESTING** D. Kallio reported that he is waiting to hear from North Jackson regarding the contract for the data base program. He also reported he will be meeting with CCI on Friday to discuss possibility of joint effort to test 2 to 3 wells for water quality, particularly selenium.
- 9. **COMMISSION ON AGING-** No report.
- 10. **PARKS & RECREATION COMMITTEE-**
 - a. The changes to the Recreation Plan were completed and reviewed. After discussion, a Resolution to adopt the updated Recreation Plan was presented and by Roll call vote: D. Walch-yes, C. Schram-yes, D. Kallio-yes, J. Wixtrom-yes, L. Yelle-yes. Resolution was adopted. (Copy attached)
 - b. C. Schram motioned, D. Kallio supported to appoint Brian Bezotte to the Recreation Committee. Ayes: 5 Nays: 0
 - c. D. Kallio motioned, C. Schram supported to approve payment of the Spodeck bill of \$465 for wood chips for the playground area. Ayes: 5 Nays: 0 Motion carried.
- 11. **PERSONNEL COMMITTEE** No report
- 12. **CEMETERY-** No report
- H. OLD BUSINESS-**
 - 1. D. Kallio reported that the quiet title is on file. The township now owns the old school building and approximately six acres.
 - 2. D. Kallio motioned, C. Schram supported to purchase and install "Caution children playing" signs at the corner of Linda & Sicotte and Jack. Ayes: 5 Nays: 0 Motion carried. (Request from Teresa Hassell)
- I. NEW BUSINESS** – Correspondence from the Secretary of State informing that the township is eligible to incorporate as a charter township. After discussion, L. Yelle motioned, D. Kallio supported to contact the township attorney in regards to the pros and cons associated with such an action. Ayes: 5 Nays: 0 Motion carried.
- J. OTHER/ CORRESPONDENCE:** None

K. PUBLIC COMMENT: Jo Kapeller commented on the nice job the cemetery worker is doing.

L. ADJOURNMENT: D. Walch motioned, C. Schram supported to adjourn. Ayes: 5 Nays: 0
Motion carried. Meeting adjourned at 8:38 p.m.

Lee Yelle
Clerk

David Kallio
Supervisor