

# CEDS Bi-Monthly Meeting #3

June 22, 2023

## Agenda

- ▶ Welcome and introductions
- ▶ UP Clean Energy Coalition - Michael Larson (MI Energy Options) and Abby Wallace (MEC)
- ▶ CEDS Data Presentation - Ryan Soucy
- ▶ Items of Regional Interest
- ▶ Partner updates



# Welcome and Introductions

<b>Alan Barr</b>	<i>Creative Change</i>	<b>Vince Bevins</b>	<i>Michigan Department of Transportation</i>
<b>Trent Bellinger</b>	<i>Delta Schoolcraft ISD</i>	<b>Victoria George</b>	<i>Schoolcraft Tourism &amp; Commerce</i>
<b>Craig Cugini</b>	<i>City of Ishpeming</i>	<b>Lois Ellis</b>	<i>Dickinson Area Economic Development Alliance</i>
<b>Trae Forgette</b>	<i>Marquette-Alger RESA</i>	<b>Marty Fittante</b>	<i>Invest UP</i>
<b>Christopher Germain</b>	<i>Lake Superior Community Partnership</i>	<b>Geri Grant</b>	<i>Superior Watershed Partnership</i>
<b>Abbie Hanson</b>	<i>Michigan EGLE</i>	<b>Nate Heffron</b>	<i>Superior Trade Zone/ City of Negaunee</i>
<b>Janice Ketcham</b>	<i>City of Gladstone</i>	<b>Julee Kaurala</b>	<i>Michigan Department of Health and Human Services</i>
<b>Alex Kofsky</b>	<i>Accelerate UP</i>	<b>Karen Kovacs</b>	<i>City of Marquette</i>
<b>Donna LaCourt</b>	<i>Michigan Department of Agricultural and Rural Development</i>	<b>Dotty LaJoye</b>	<i>Central UP Planning and Development</i>
<b>Brigitte LaPointe</b>	<i>Keweenaw Bay Indian Community</i>	<b>Ed LeGault</b>	<i>Delta County Economic Development Alliance</i>
<b>Emily Leach</b>	<i>Marquette County Planning</i>	<b>Jessie Viau</b>	<i>Hannahville Indian Community</i>
<b>Holly Peoples</b>	<i>Michigan Works of the Upper Peninsula</i>	<b>Kathy Reynolds</b>	<i>Greater Munising Bay Partnership of Commerce</i>
<b>Sue Roll</b>	<i>U.P. Arts &amp; Culture Alliance</i>	<b>Holly Thomma</b>	<i>USDA</i>
<b>Ryan Stern</b>	<i>UP Regional Labor Federation</i>	<b>Julie Shaw</b>	<i>Superior Alliance for Independent Living</i>
<b>Jordan Stanchina</b>	<i>City of Iron Mountain</i>	<b>Joe Thiel</b>	<i>Innovate Marquette SmartZone</i>
<b>Zak Aubert</b>	<i>Menominee County/Menominee DDA</i>	<b>David Nyberg</b>	<i>Northern Michigan University</i>
<b>Dave Ollila</b>	<i>Shophouse Park</i>	<b>Vicki Schwab</b>	<i>Michigan Economic Development Corporation</i>
<b>Irina Bruno</b>	<i>Bonifas Fine Arts Center</i>	<b>Steve Gillotte</b>	<i>MI Dept. of Labor and Economic Growth</i>

## Modern Infrastructure and Technology

### **Goal # 1:** Pursue opportunities to improve affordability and reliability of the region's energy supply

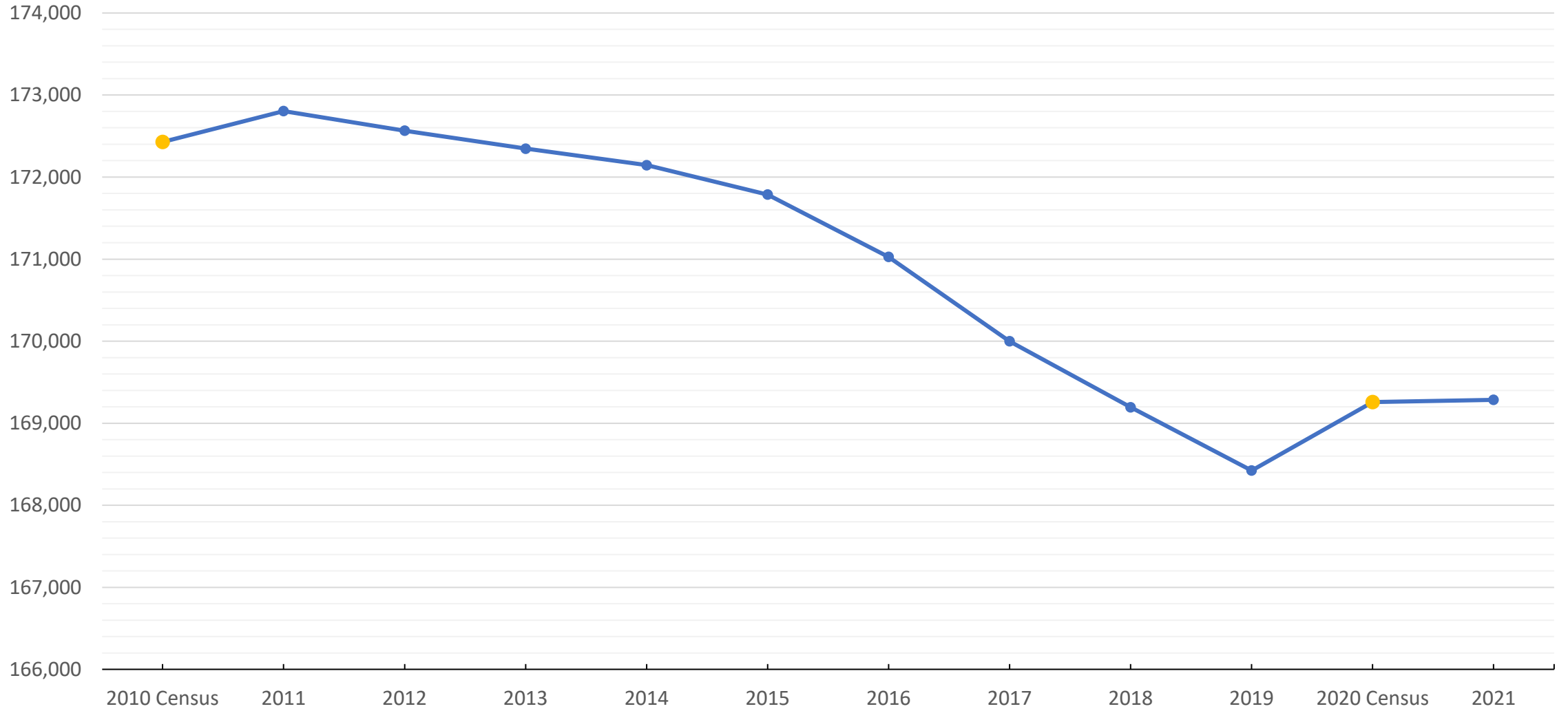
- Objective 1.1** Grow the region's renewable energy portfolio.
- Objective 1.2** Consideration of the recommendations from the U.P. Energy Task Force.
- Objective 1.3** Improve the affordability of the region's energy supply
- Objective 1.4** Grow the region's energy production from renewable sources to 10% by 2025.

A kayaker in a red kayak is shown on a clear, green river. The kayaker is wearing a light blue hoodie and a yellow life vest. The water is so clear that large, moss-covered rocks are visible underwater. The background shows a dense forest of green trees under a bright sky.

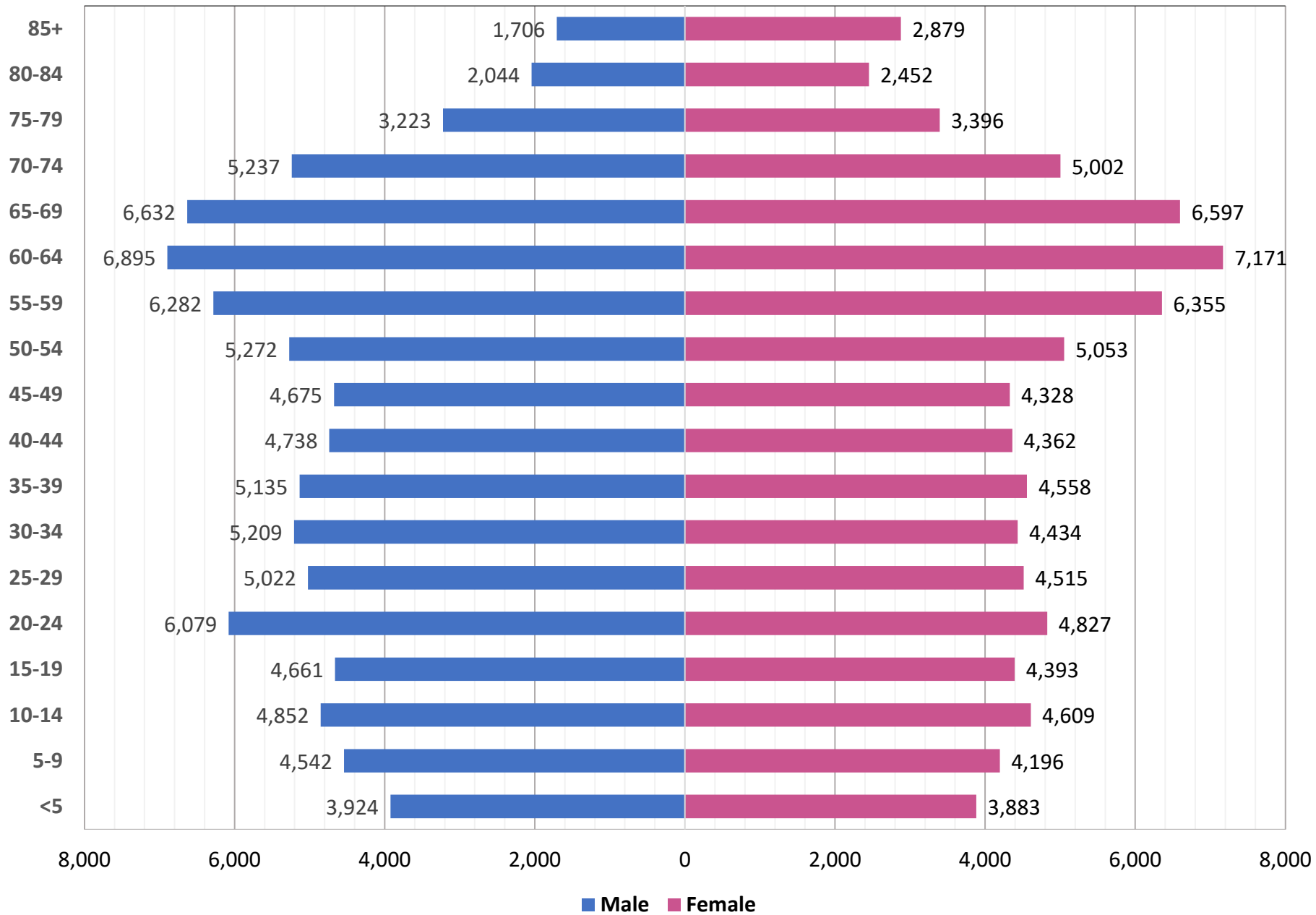
# 2023 CEDS Data Presentation Update

- ▶ Demographics
- ▶ Housing
- ▶ Labor & Employment
- ▶ Occupations & Industry
- ▶ Income
- ▶ Cost of Living
- ▶ Broadband Availability
- ▶ Distress
- ▶ Health

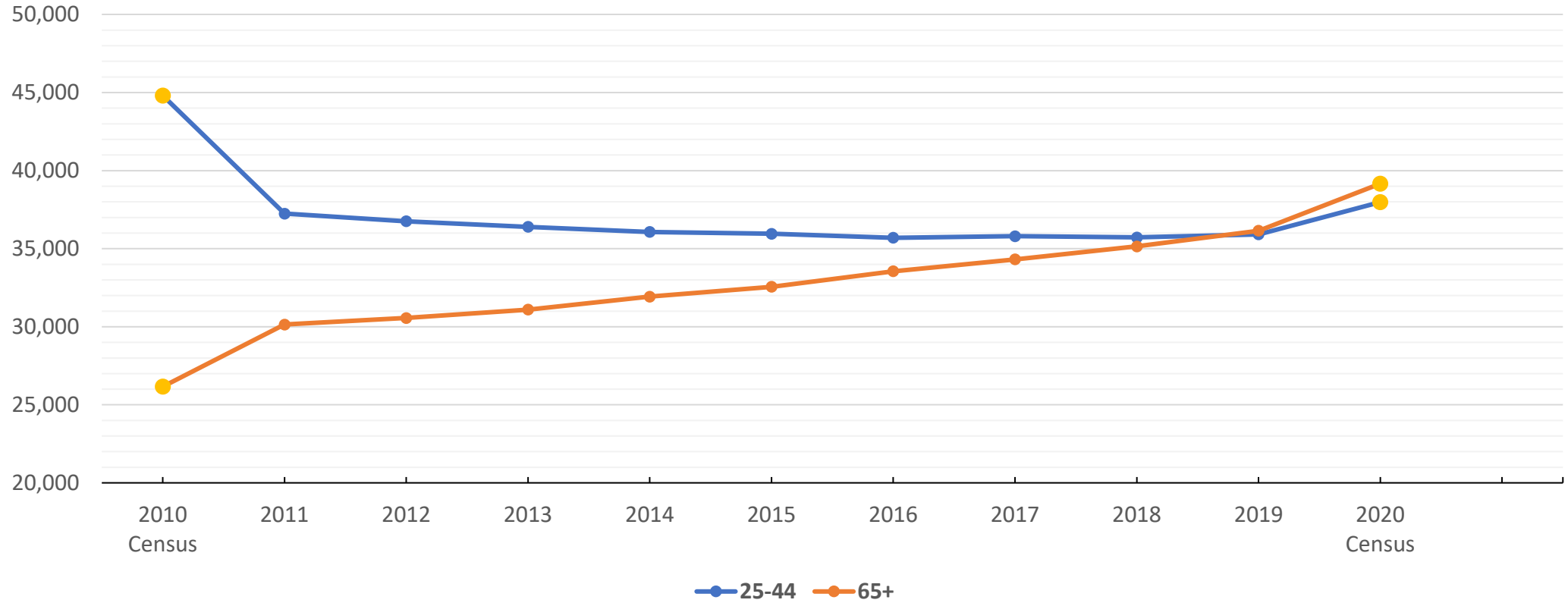
Overall Population, 2010-2021  
Six-County CUP Region, Decennial Census and ACS



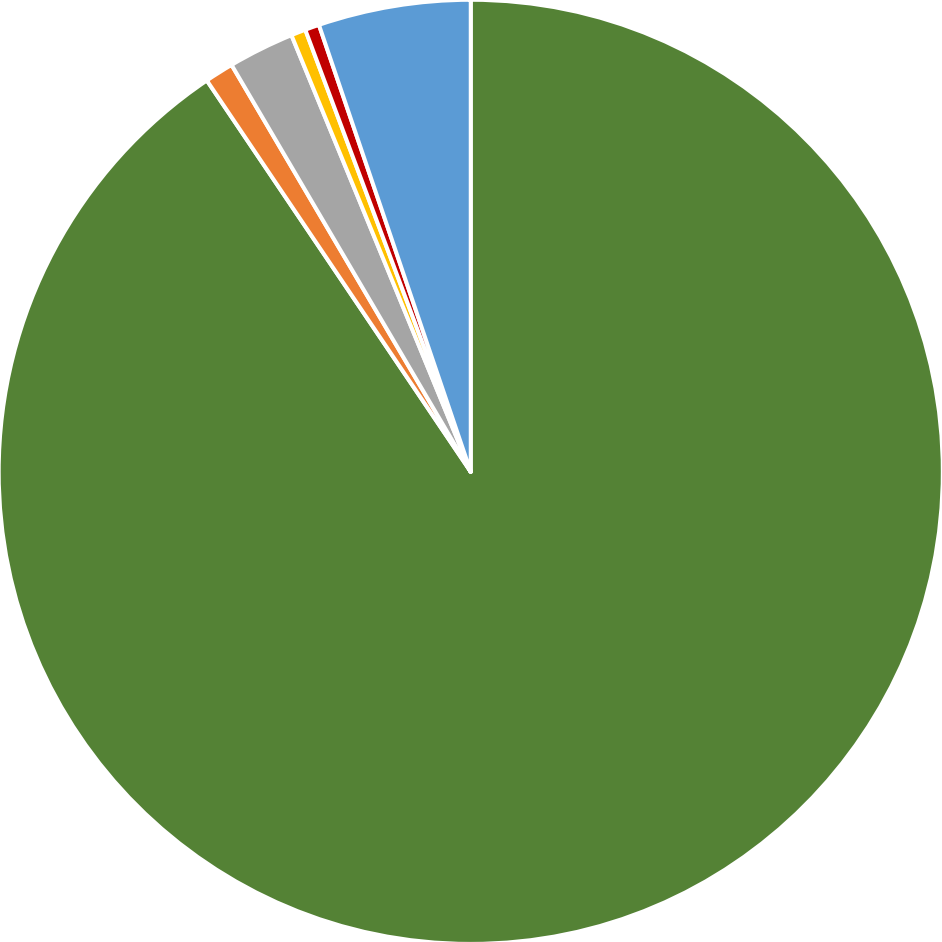
Central UP Population Pyramid, Census 2020



### Population change among ages 25-44 and 65+, Six-County Region, Decennial Census and ACS



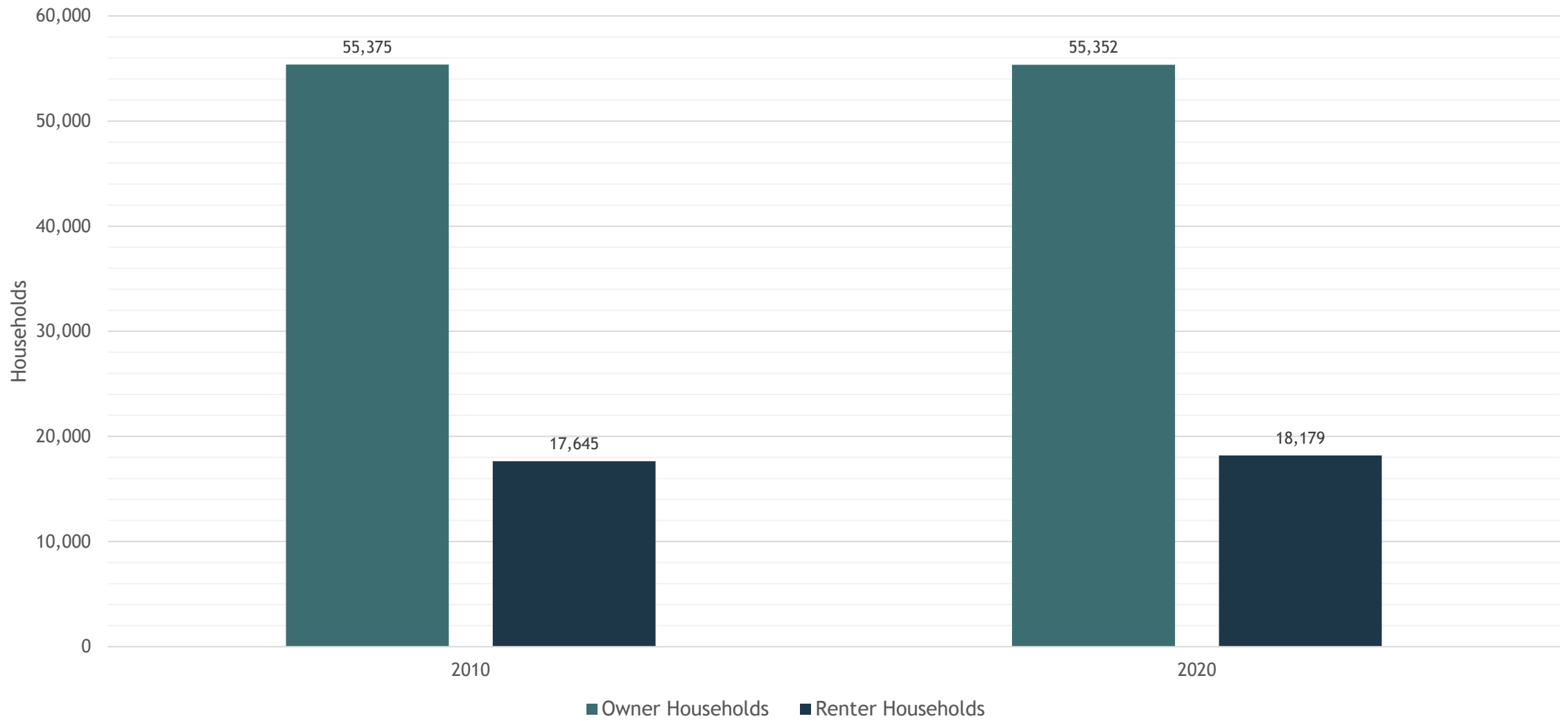
Race, Six County Central UP Region – Census 2020



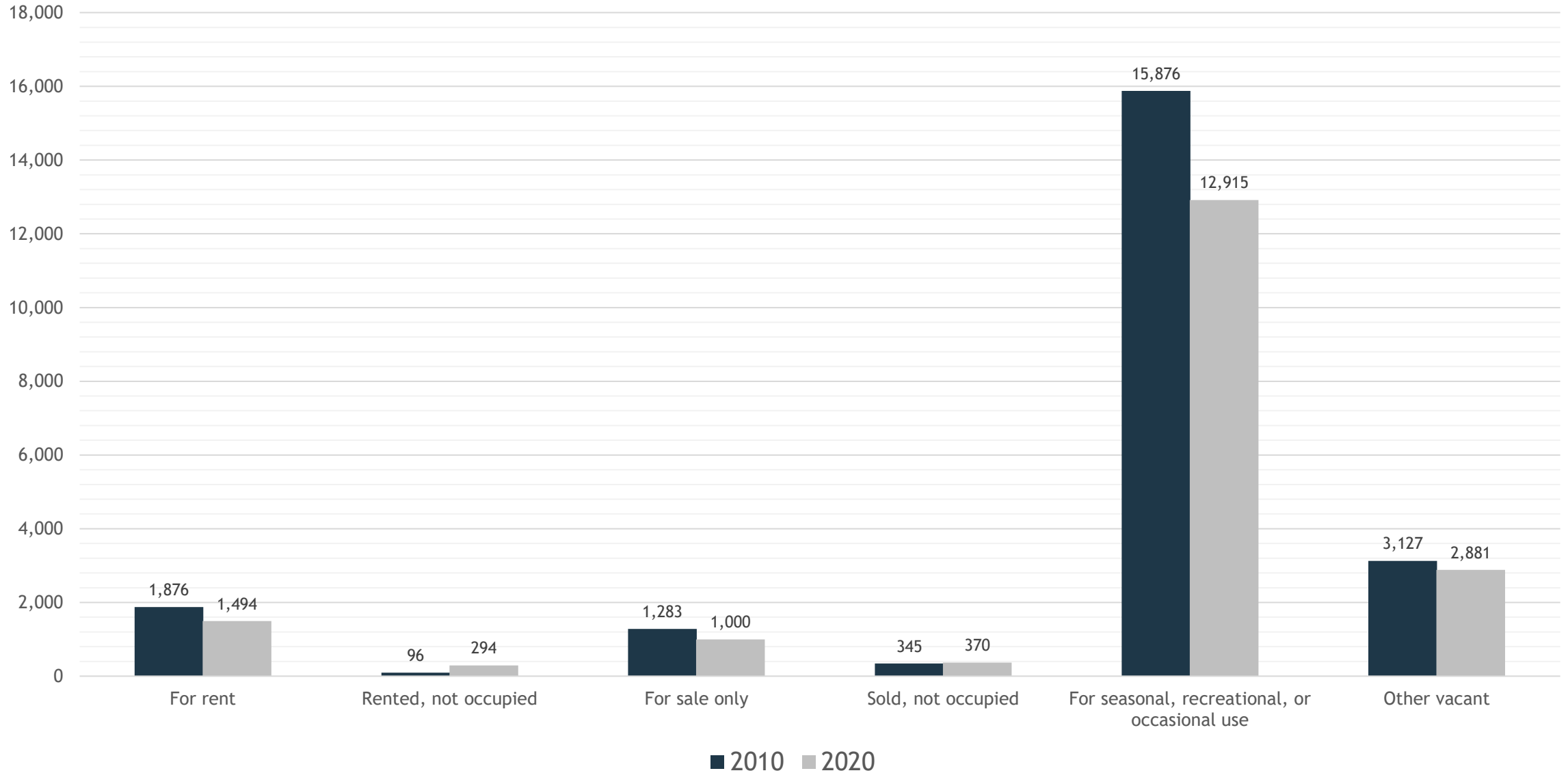
- White alone
- Black or African American alone
- American Indian and Alaska Native alone
- Asian alone
- Some Other Race alone
- Population of two or more races



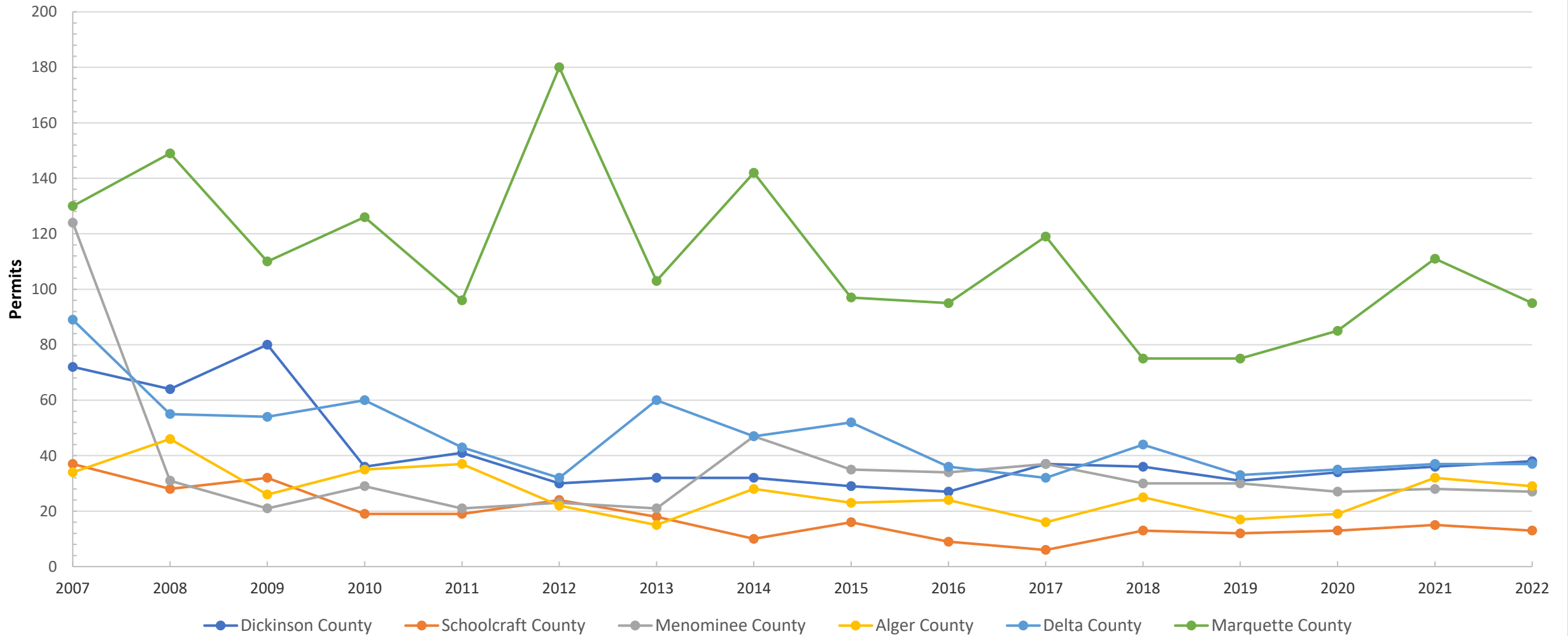
Owner and Renter Occupied Households, 2010 & 2020 - U.S. Census



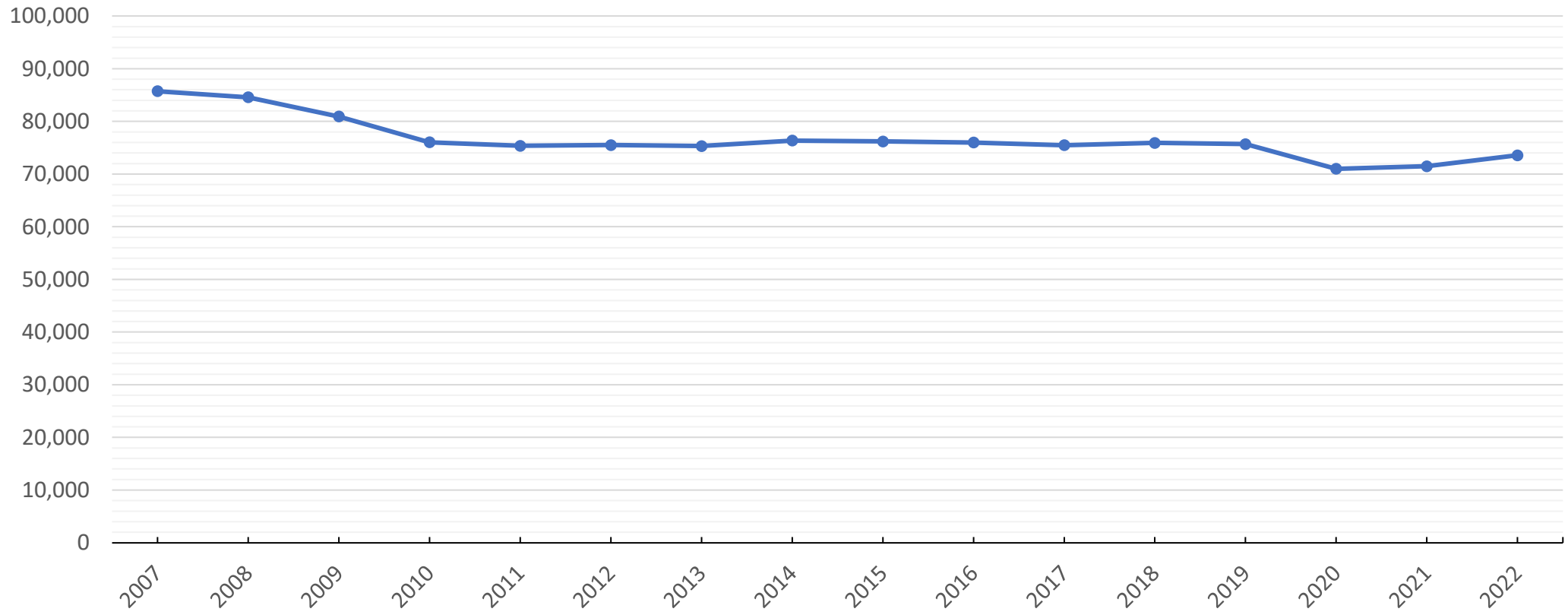
## Vacancy Status 2010 & 2020 - US Census



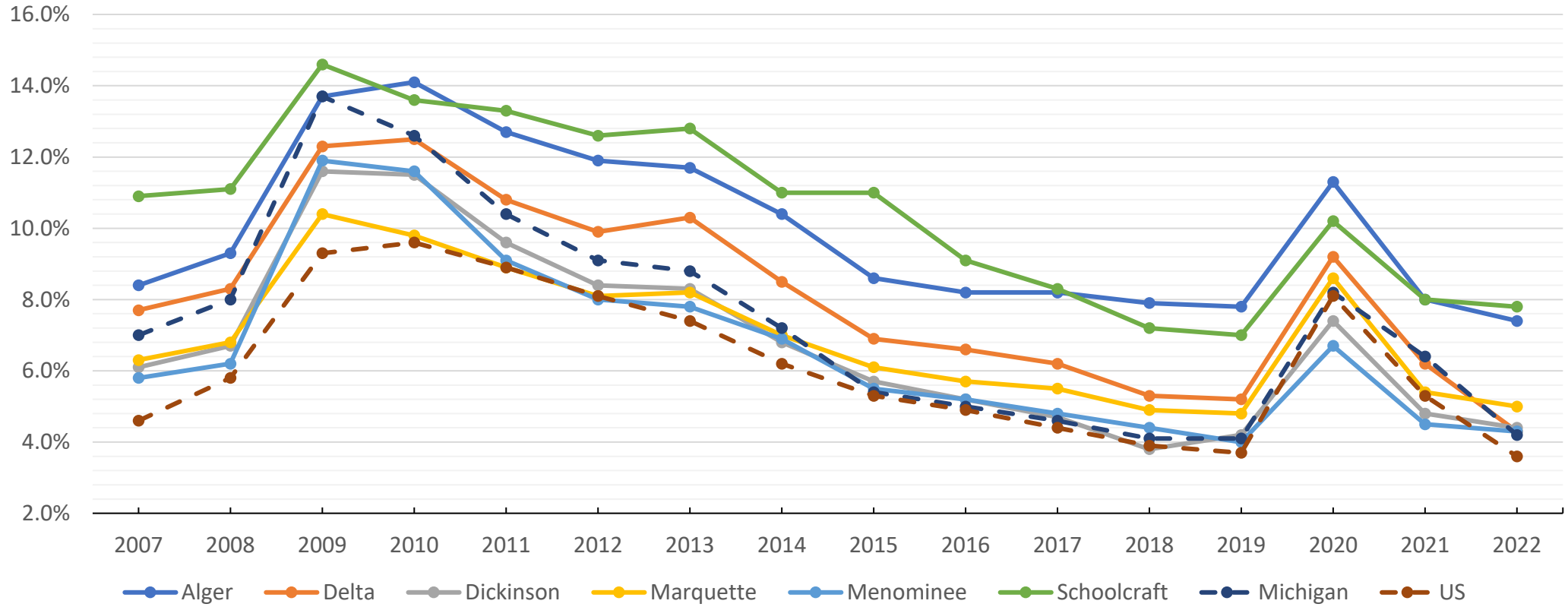
New Private Housing Structures Authorized by Building Permits  
2007-2022, FRED - St. Louis Federal Reserve



### BLS Annual Employment Average, 2007-2022 Six-County Region



BLS Average Annual Unemployment Rate, 2007-2022  
Six-County Region, State, and Nation



## UPPER PENINSULA EMPLOYMENT BY OCCUPATIONAL GROUP, 2022

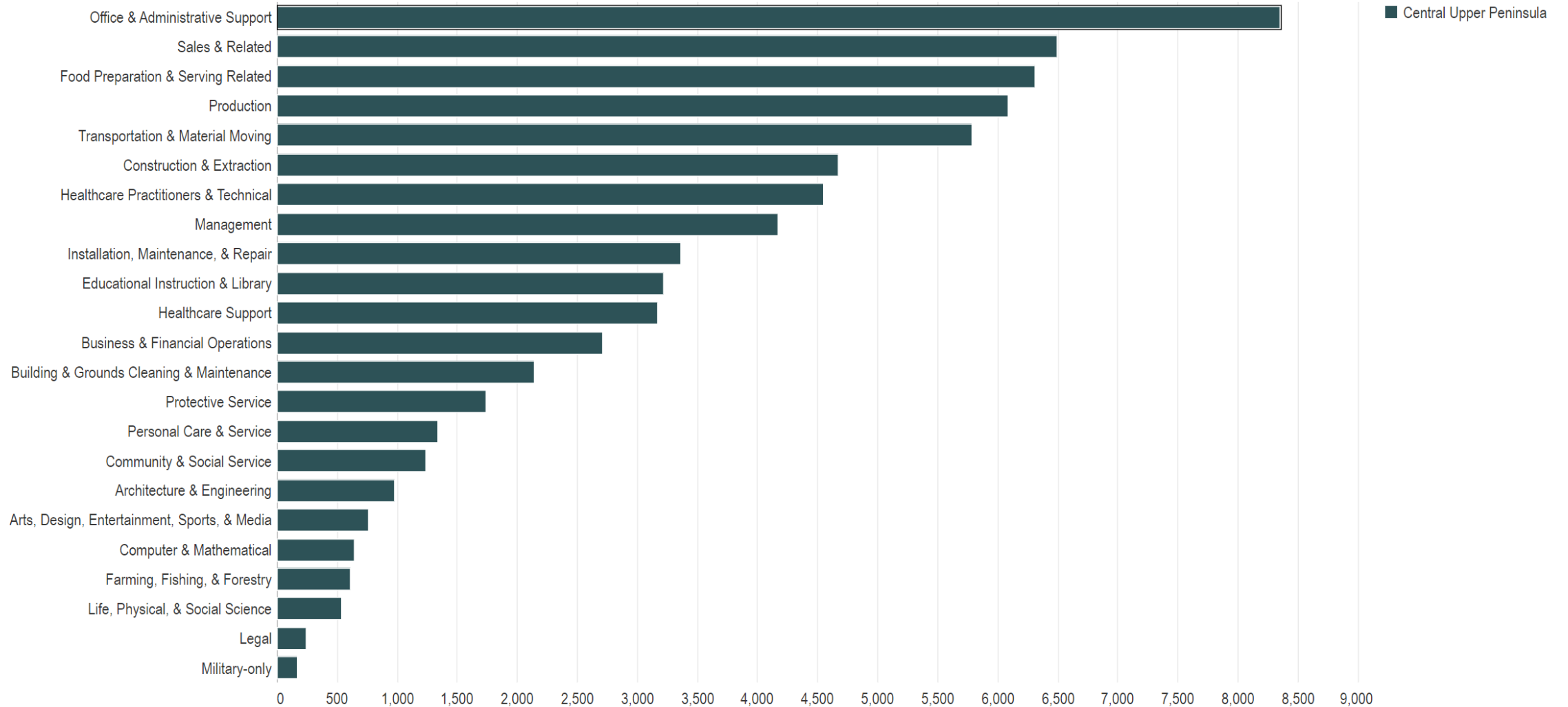
View details on the employment distribution of major occupational groups by hovering over any data point. Change the year viewed using the slider to the right, or switch between a regional overview and a county-level analysis using the radio buttons.

COUNTY VS REGION

- Upper Peninsula  
 Counties

YEAR

2022



## NET EMPLOYMENT CHANGE FOR SELECTED PERIOD BY OCCUPATION: CENTRAL UPPER PENINSULA

Change the period viewed using the year range selection to the right, or change the region analyzed using the radio buttons. Hover over any data point for more information.

### REGION SELECTION

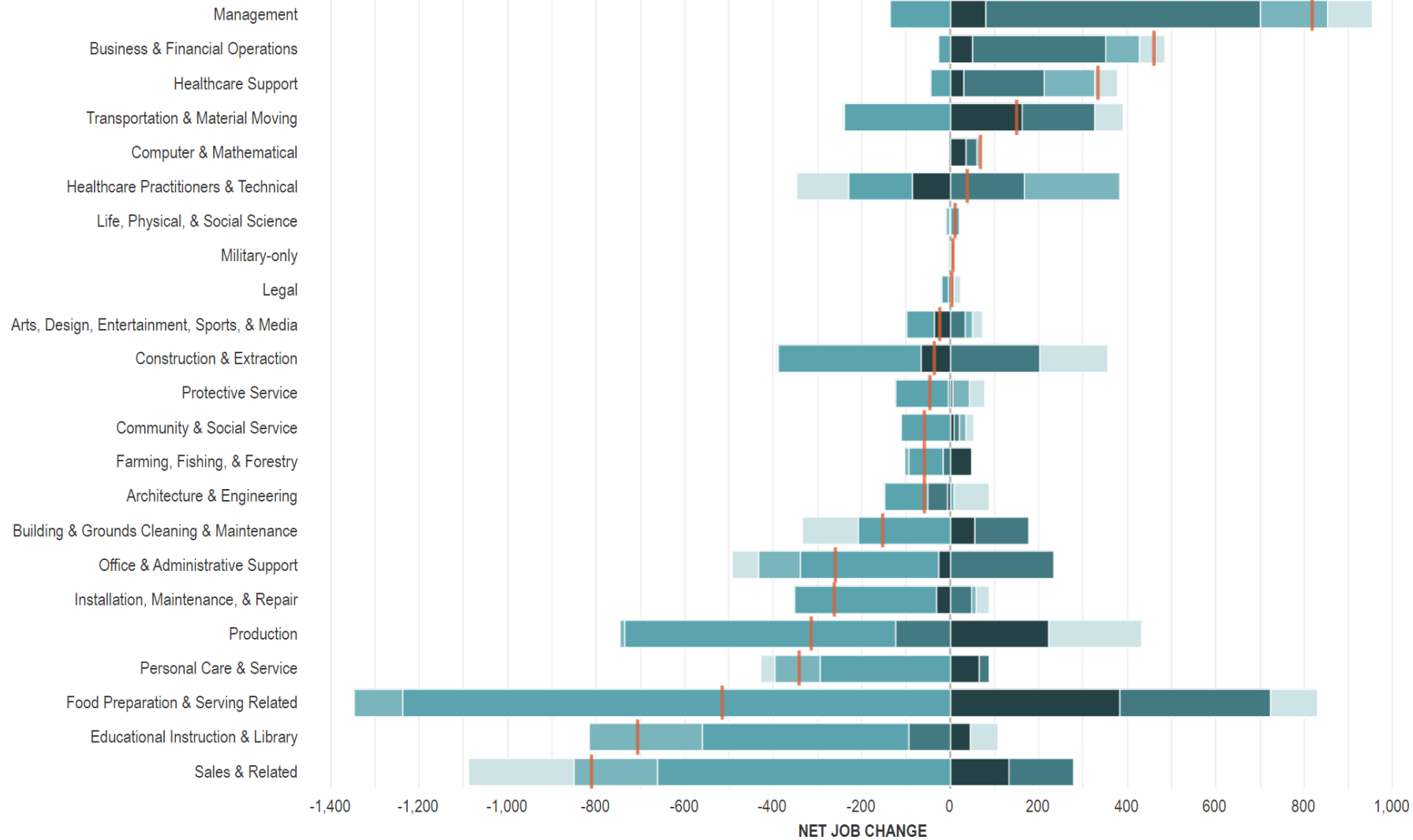
- Upper Peninsula
- Central Upper Peninsula
- Western Upper Peninsula
- Eastern Upper Peninsula

### YEAR RANGE



- 2018
- 2019
- 2020
- 2021
- 2022

| Total Net Change for Selected Period

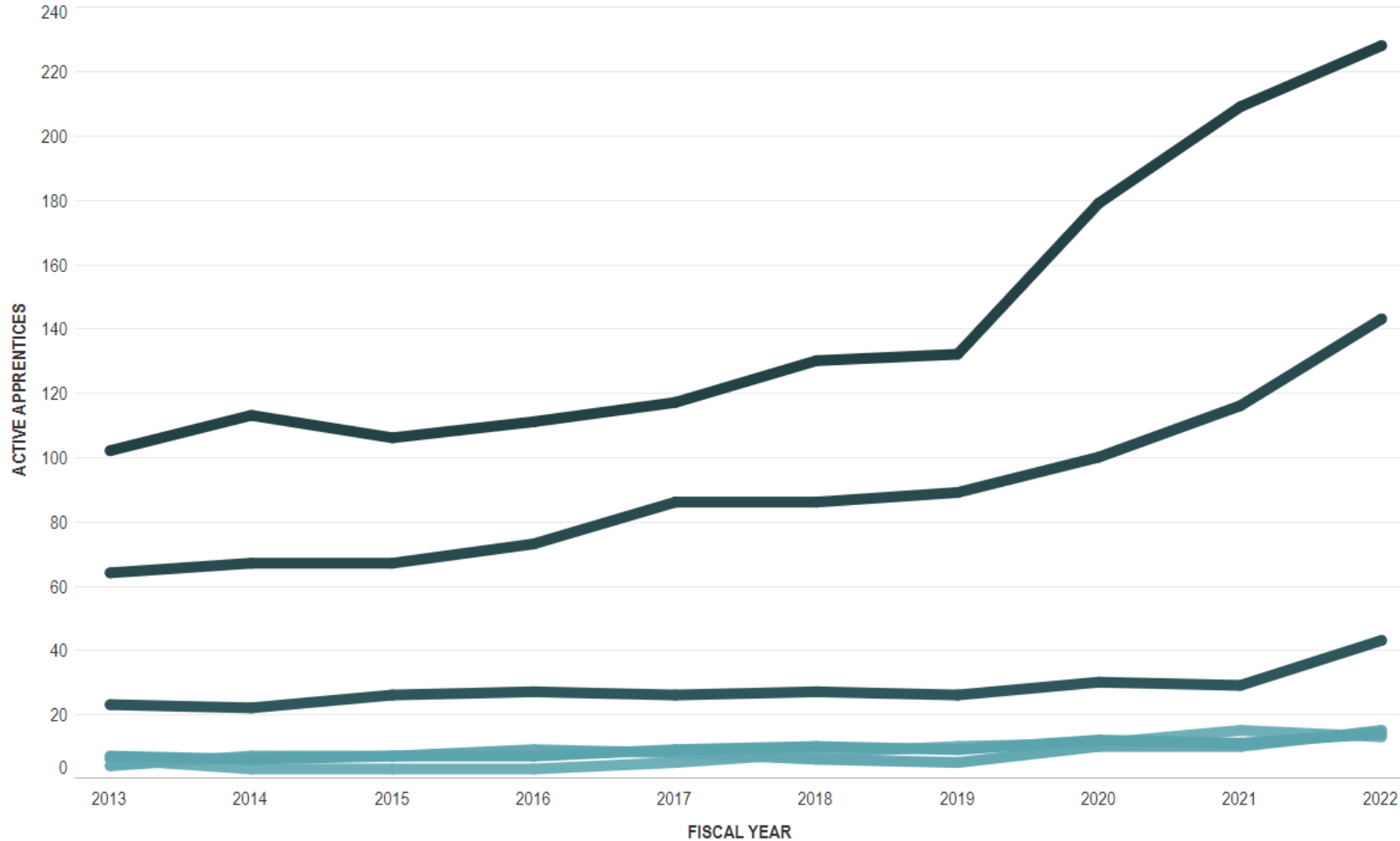


Sources: US Bureau of Labor Statistics (BLS); Lightcast 2023.1—QCEW Employees, Non-QCEW Employees, and Self-Employed; TIP Strategies, Inc.  
 Notes: Year Range selection should include the previous year from the first year included in the visualization (e.g., to see 2017-2021, use the range 2016-2021).

[Return to Menu](#)

## APPRENTICESHIP TRENDS IN ALL

This analysis shows annual active apprentices living in Marquette County, Delta County, Dickinson County and 3 more between 2013 and 2022. Click on a data point in the line chart to update the table on the right. Change the county and demographic characteristic viewed using the radio buttons. Hover over any data point for more information on starting and exit wages.



### COUNTY SELECTION

- Alger County
- Baraga County
- Chippewa County
- Delta County
- Dickinson County
- Gogebic County
- Houghton County
- Iron County
- Keweenaw County
- Luce County
- Mackinac County
- Marquette County
- Menominee County
- Ontonagon County
- Schoolcraft County

### APPRENTICE DEMOGRAPHICS

- Educational Attainment
- Industry Sector
- Union Affiliation
- Veteran Status
- Gender
- Age Groups
- Race-Ethnicity
- People with Disabilities

### INDUSTRY DISTRIBUTION: All, 2022

Construction	80.9%
Real Estate and Rental and Leasing	11.2%
Utilities	6.1%
Public Administration	0.9%
Information	0.4%
Health Care and Social Assistance	0.2%
Mining, Quarrying, and Oil and Gas Extraction	0.2%

Sources: US Department of Labor, Registered Apprenticeship Partners Information Database System (RAPIDS); TIP Strategies, Inc.

Notes: Active apprentices are those who were/are participating in a registered apprenticeship during the fiscal year. Starting wage is the median of reported wages among the selected region, group, and year as apprentices begin a program. Exit wage is the median of



# Industry Table

All Industries in Central U.P.

Save

Export

4-Digit

Filter

Keep

Hide

Jump To

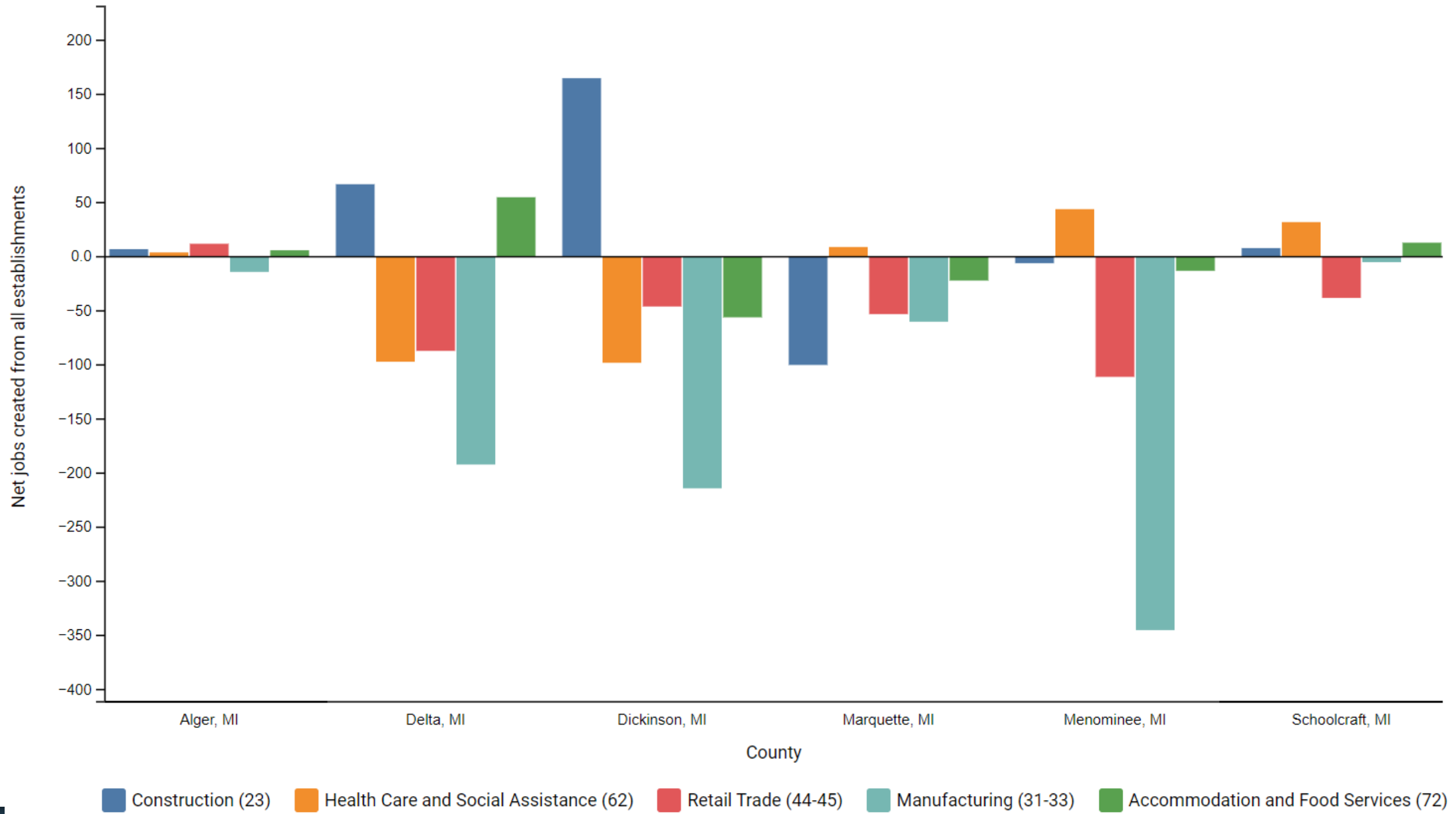
+ Create Group

Add/Remove Columns

NAICS	Description	2020 Jobs	2022 Jobs	2020 - 2022 Change	2020 - 2022 % Change
7225	Restaurants and Other Eating Places	3,982	4,819	837	21%
3363	Motor Vehicle Parts Manufacturing	265	905	640	242%
4539	Other Miscellaneous Store Retailers	256	513	257	100%
2382	Building Equipment Contractors	1,581	1,831	250	16%
1110	Crop Production	62	308	246	397%
3327	Machine Shops; Turned Product; and Screw, Nut, and Bolt Manufacturing	734	957	223	30%
3118	Bakeries and Tortilla Manufacturing	133	340	207	156%
3315	Foundries	396	561	165	42%
4523	General Merchandise Stores, including Warehouse Clubs and Supercenters	1,640	1,795	155	9%
7139	Other Amusement and Recreation Industries	337	489	152	45%
7211	Traveler Accommodation	865	1,008	143	17%
4931	Warehousing and Storage	45	179	134	298%
6232	Residential Intellectual and Developmental Disability, Mental Health, and Substance Abuse Facilities	151	280	129	85%
7224	Drinking Places (Alcoholic Beverages)	418	547	129	31%

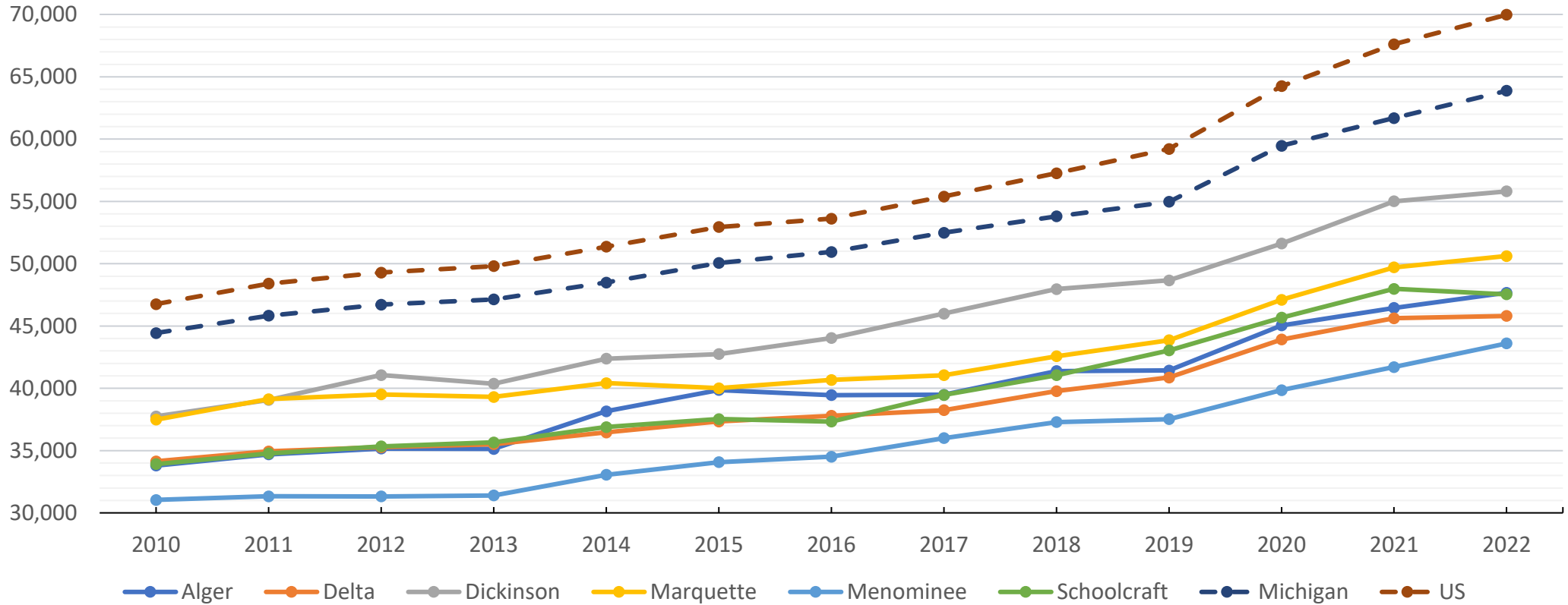
# NET JOB CREATION

Year: 2020

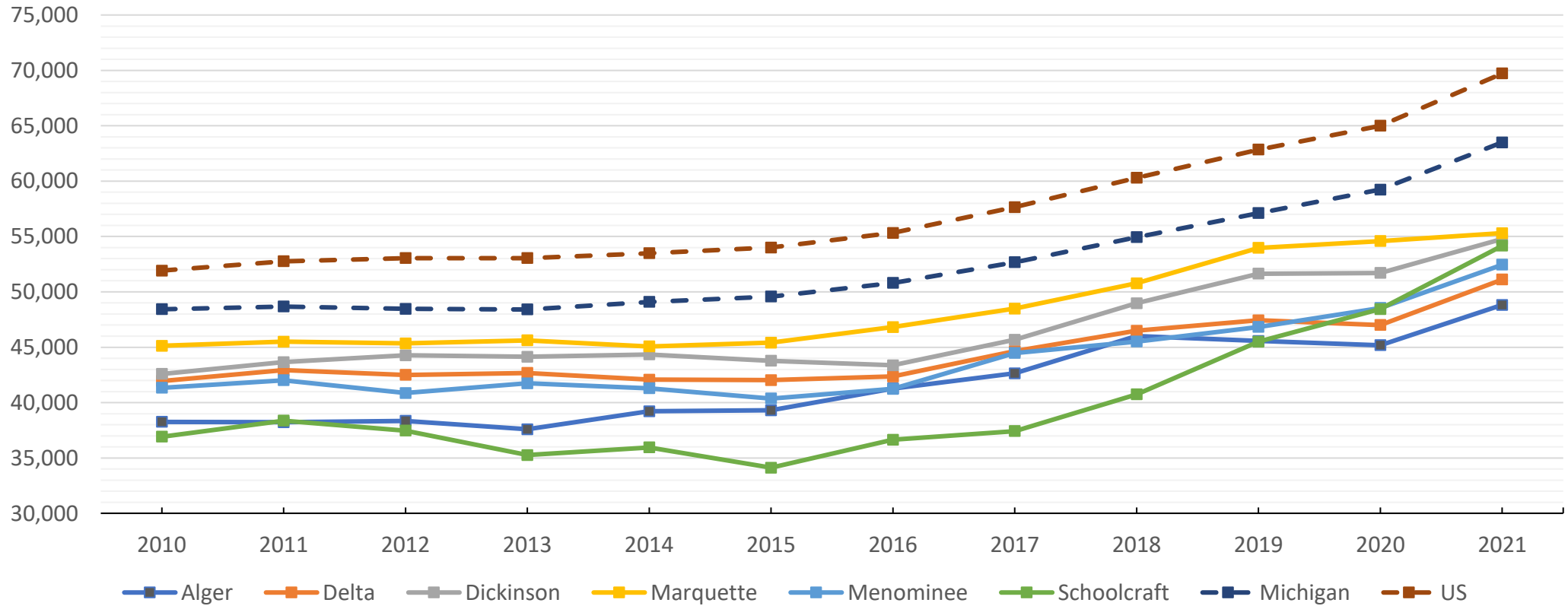


Source: U.S. Census Bureau - Center for Economic Studies - Business Dynamics Statistics (2020)

BLS Average Annual Pay, All Industries, Total Covered, 2010-2022  
Six-County Region with State and Nation



## ACS Median Household Income, 2010-2021 By County with State and Nation



## TYPICAL LIVING EXPENSES COMPARISON

Compare typical annual living expenses across the Central Upper Peninsula region and its counties. Change the region analyzed using the radio buttons, or change the living wage household structure using the dropdown menu. Hover over any data point for more information.

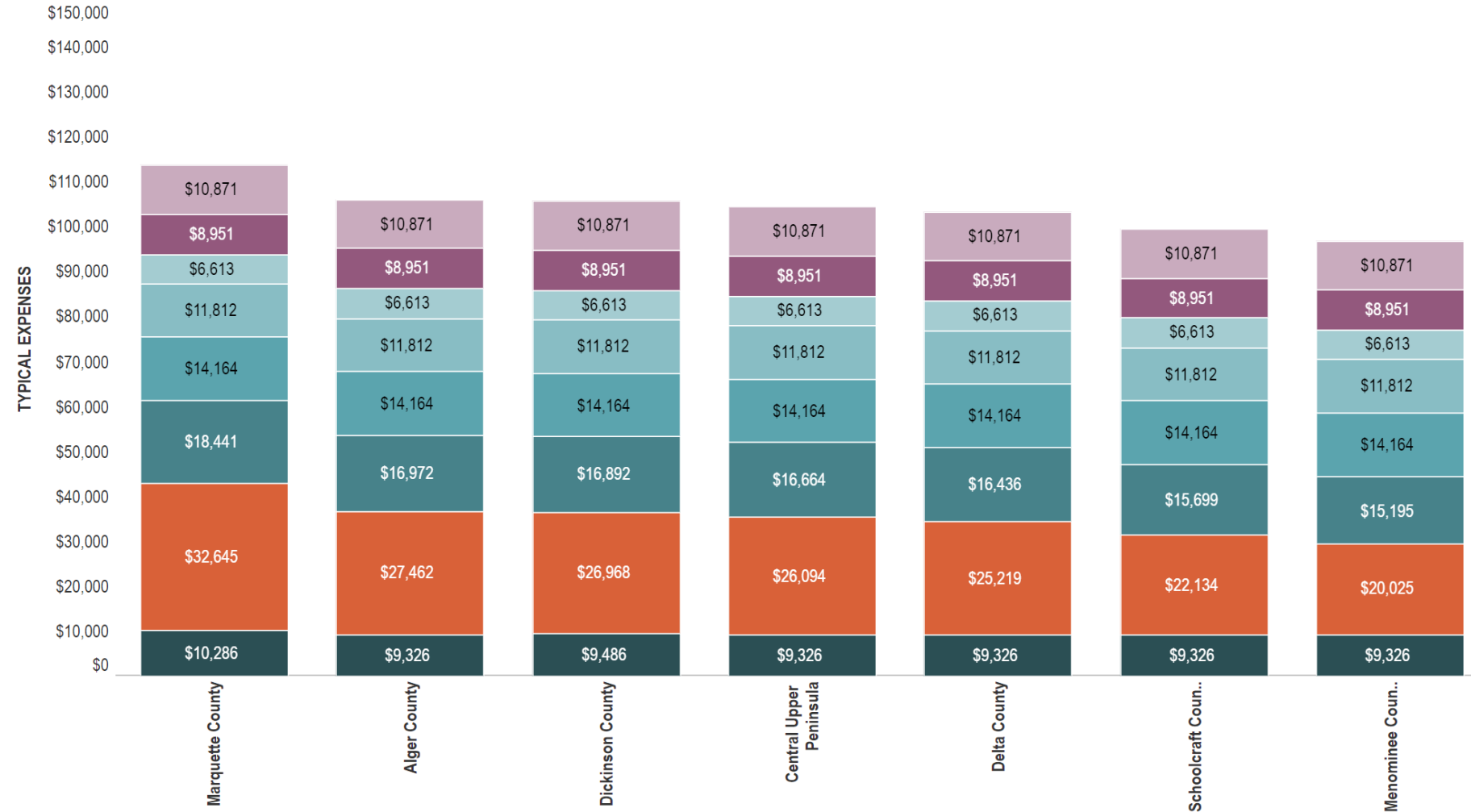
### REGION SELECTION

- Upper Peninsula
- Central Upper Peninsula
- Western Upper Peninsula
- Eastern Upper Peninsula

### LIVING WAGE SELECTION

Two adults, both working with two children

- Personal Service Expenses
- Social Engagement Expenses
- Medical Expenses
- Food Expenses
- Transportation Expenses
- Tax Expenses
- Child Care Expenses
- Housing Expenses



Sources: Glasmeier, Amy K. Living Wage Calculator, 2023, Massachusetts Institute of Technology (MIT); TIP Strategies, Inc.

Notes: Personal Service Expenses and Social Engagement Expenses include cost estimates from the 2021 Bureau of Labor Statistics Consumer Expenditure Survey for items not otherwise listed in the major budget components. Personal Services include expenses such as apparel and services, housekeeping supplies, personal care products and services, reading, and miscellaneous. Social Engagement includes expenses such as fees and admissions, audio and visual equipment and services, pets, toys, hobbies, and other entertainment supplies, equipment, and services. Hourly earnings are in 2021 USD.

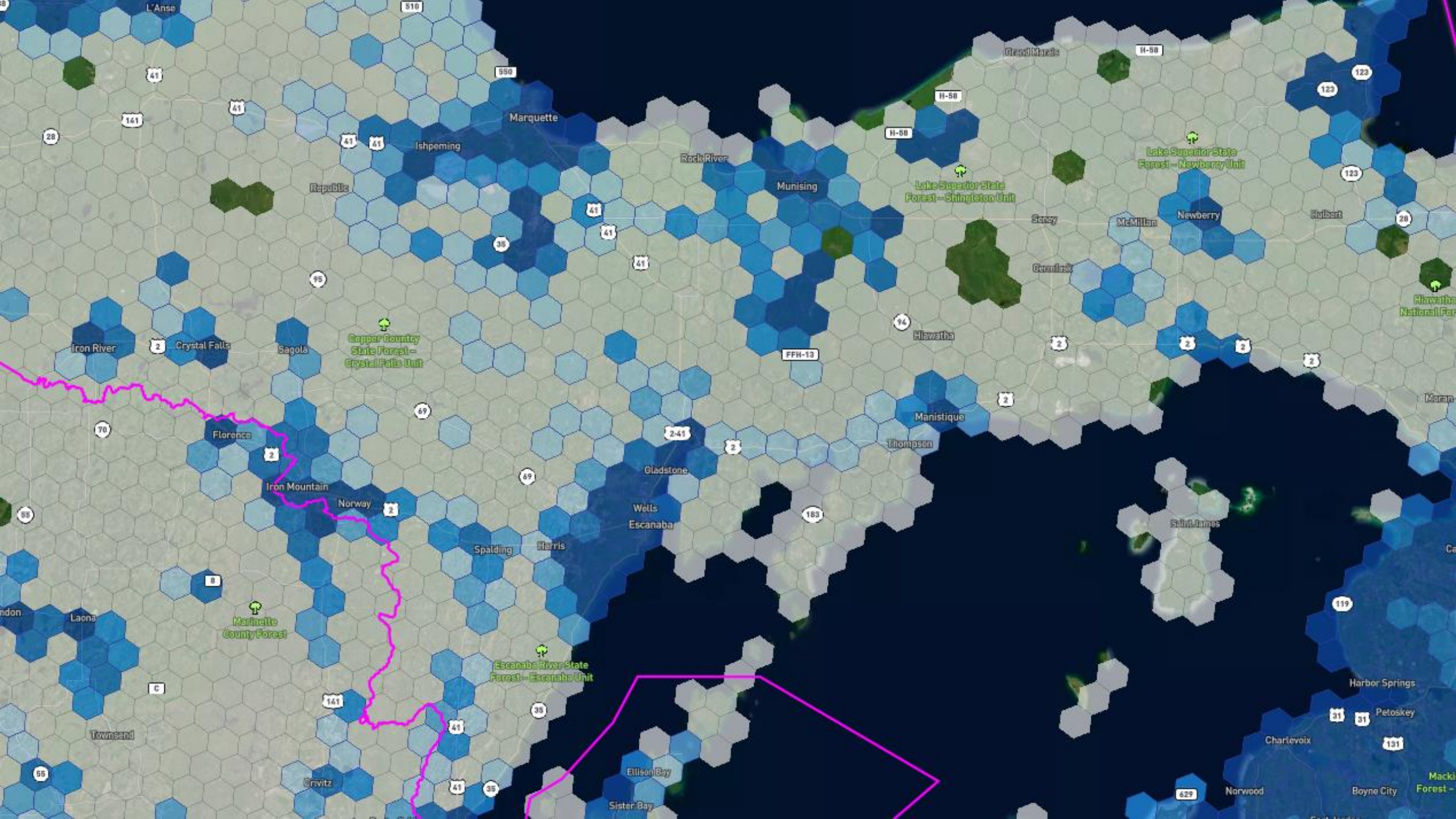
[Return to Menu](#)

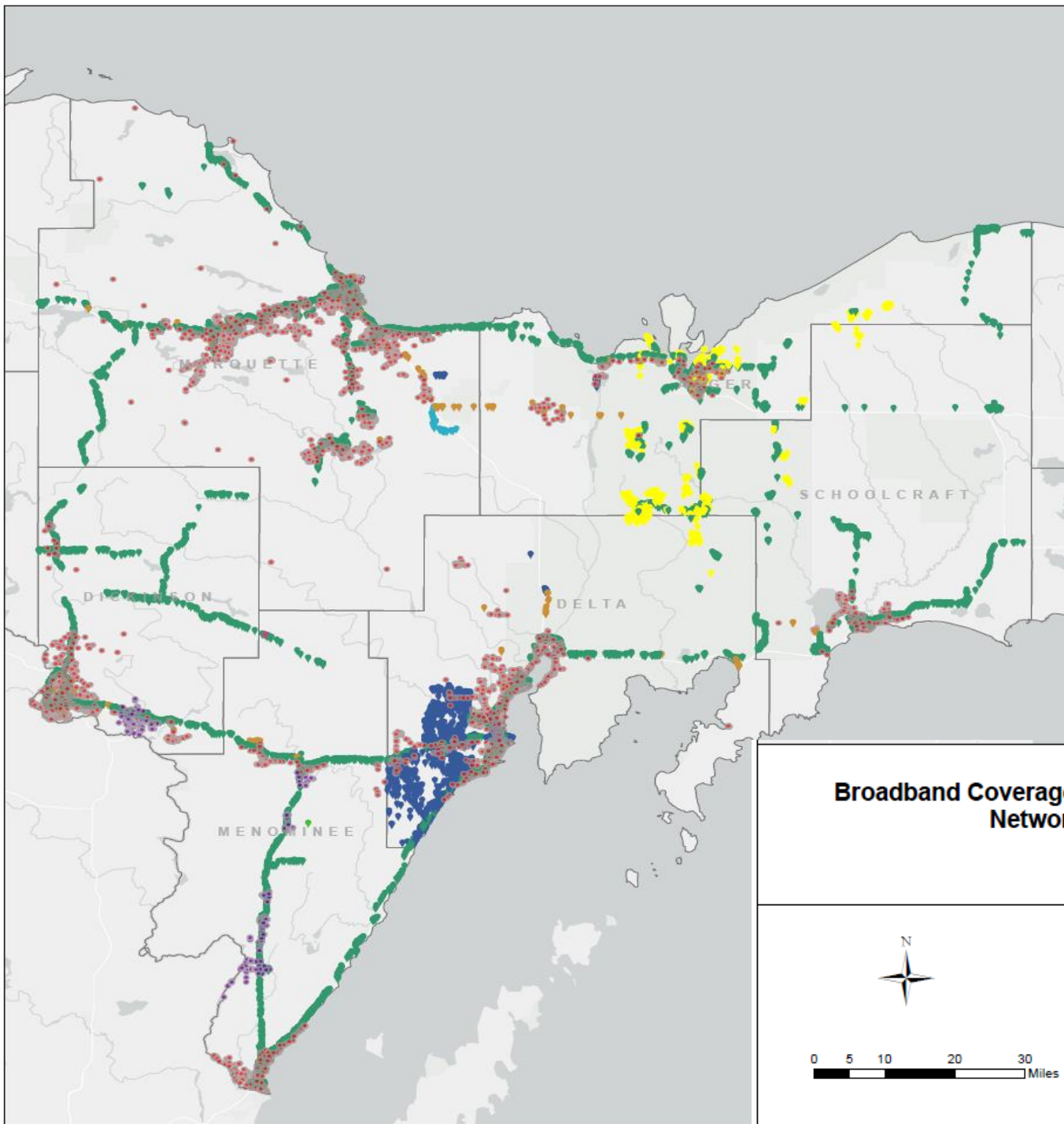
## The ALICE Stability Budget is Even Further Out of Reach

The ALICE Stability Budget incorporates the higher costs for maintaining a more financially stable household over time, including a 10% savings category that can be used in an emergency, for additional education, or to buy a home.

### ALICE Household Stability Budget, Selected Counties, Michigan, 2021

Monthly Costs and Credits	Single Adult	Two Adults	Two Adults Two Children	Two Adults, Two In Child Care
Housing - Rent	\$600	\$707	\$922	\$922
Housing - Utilities	\$154	\$239	\$292	\$292
Child Care	\$0	\$0	\$575	\$1,600
Food	\$632	\$1,173	\$2,080	\$1,800
Transportation	\$941	\$1,141	\$1,405	\$1,405
Health Care	\$189	\$389	\$557	\$557
Technology	\$125	\$160	\$160	\$160
Miscellaneous	\$264	\$381	\$599	\$674
Savings	\$264	\$381	\$599	\$674
Tax Payments	\$554	\$720	\$1,294	\$1,490
Tax Credits	\$0	\$0	(\$787)	(\$1,267)
Monthly Total	\$3,723	\$5,291	\$7,696	\$8,307
ANNUAL TOTAL	\$44,676	\$63,492	\$92,352	\$99,684
Hourly Wage	\$22.34	\$31.75	\$46.18	\$49.84





### Broadband Coverage (Cable vs. Fiber Networks)



#### Cable

Max Download Speed, Max Upload Speed

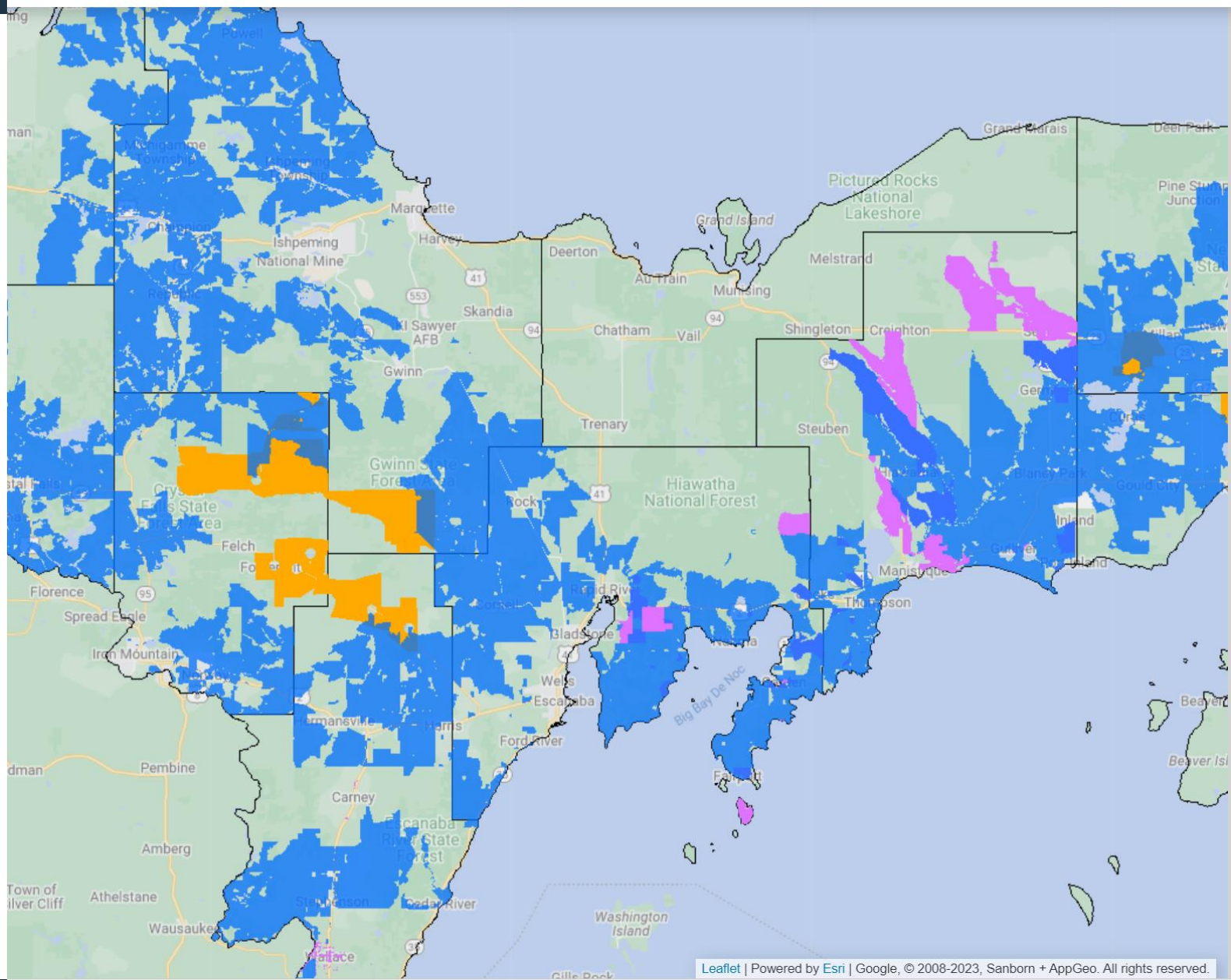
- 1000,35
- 1000,100

#### Fiber

Max Download Speed, Max Upload Speed

- 100,100
- 200,200
- 300,300
- 500,50
- 1000,35
- 1000,500
- 1000,1000
- 5000,5000





⊞ drag edge to resize

Search Address

Basemaps

Data Layers

- + **Approved Addresses**
- + **Community Anchor Institution**
- **Boundaries**
  - Parcels
  - Village
  - City
  - Township
  - School Districts
  - State Senate Districts
  - State House Districts
  - Congressional Districts
  - Counties
- Opportunity Zones**
- **Funding Commitments**
  - RDOF Funded Areas
  - CMIC Awarded Areas
  - USDA ReConnect Funded Areas
  - ACAM Funded Areas
  - ...
  - NTIA Tribal Broadband Grant Fu

### Economic Distress Criteria

24-month Avg. BLS Unemployment Rate ending **April 2023**

**2021** Per Capita Personal Income (BEA PCPI)

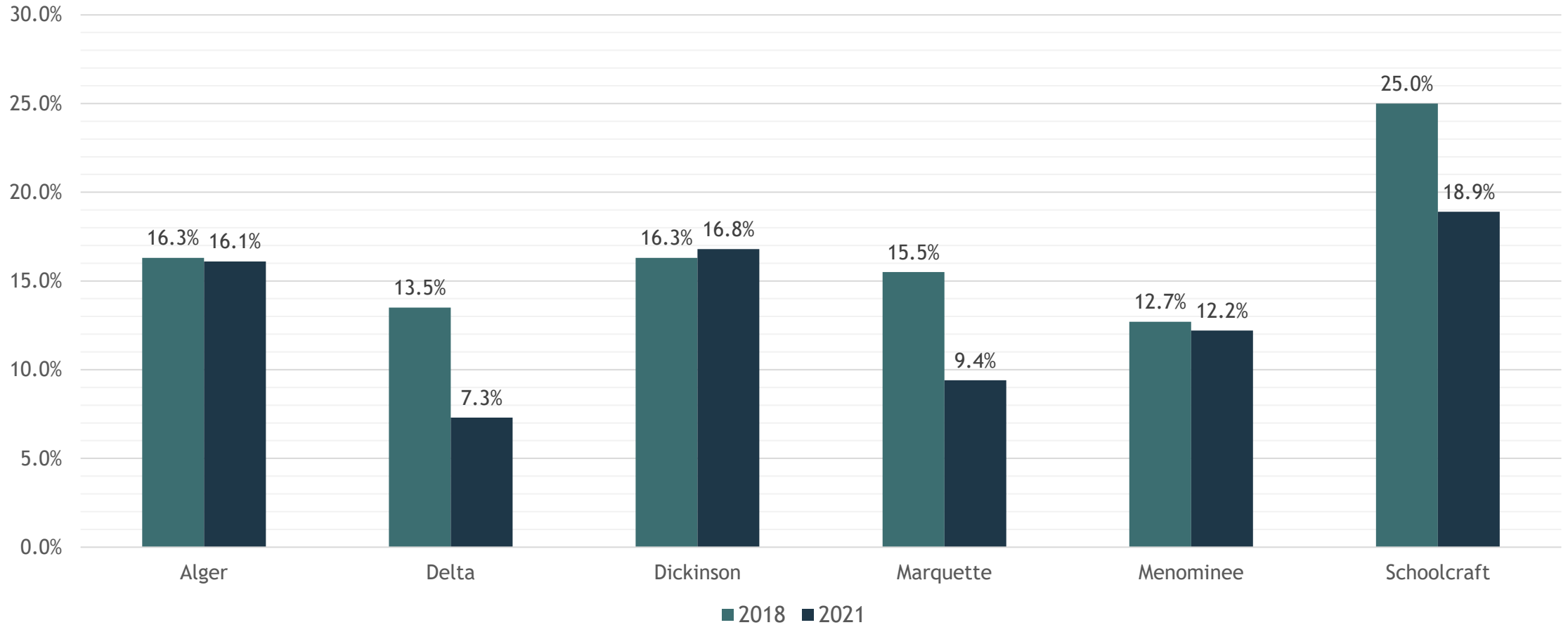
**2021** Per Capita Money Income (ACS 5-year PCMI)

	24 Month Unemployment	Threshold Calculation	BEA PCPI	Threshold Calculation	ACS 5-Year PCMI	Threshold Calculation
Selected Region	5.18	1.13	\$48,616	75.8	\$29,540	78.5
U.S.	4.05	0.00	\$64,143	100.0	\$37,638	100.0
Alger County, MI	7.73	3.68	\$42,171	65.8	\$21,998	58.4
Delta County, MI	5.66	1.61	\$46,524	72.5	\$29,228	77.7
Dickinson County, MI	4.37	0.32	\$55,335	86.3	\$32,101	85.3
Marquette County, MI	5.01	0.96	\$47,870	74.6	\$29,939	79.6
Menominee County, MI	4.30	0.25	\$48,873	76.2	\$28,819	76.6
Schoolcraft County, MI	7.92	3.87	\$49,103	76.6	\$29,867	79.4

**Note:** The threshold calculation for unemployment reflects the percentage point difference between the unemployment rate for the selected area and the U.S. figure. For example, if a region has a 24-month rate of 6.9 and the U.S. rate is 7.9, the difference shown in the threshold column is -1.0—meaning it is 1 percentage point lower than the national rate. The threshold calculation for income is the selected area's per capita value divided by U.S. per capita income and shown as a percentage share of the U.S. figure. For example, if the selected area has a threshold calculation of 145.2, this means its per capita income is 45.2 percent higher than the nation at large.

**Source:** StatsAmerica, using U.S. Bureau of Labor Statistics (unemployment), U.S. Bureau of Economic Analysis (PCPI) and U.S. Census Bureau (ACS 5-year PCMI) data

## Population Reporting Health Status Only "Fair" or "Poor" Regional Adult Health Survey, 2021 U.P. Community Health Needs Assessment

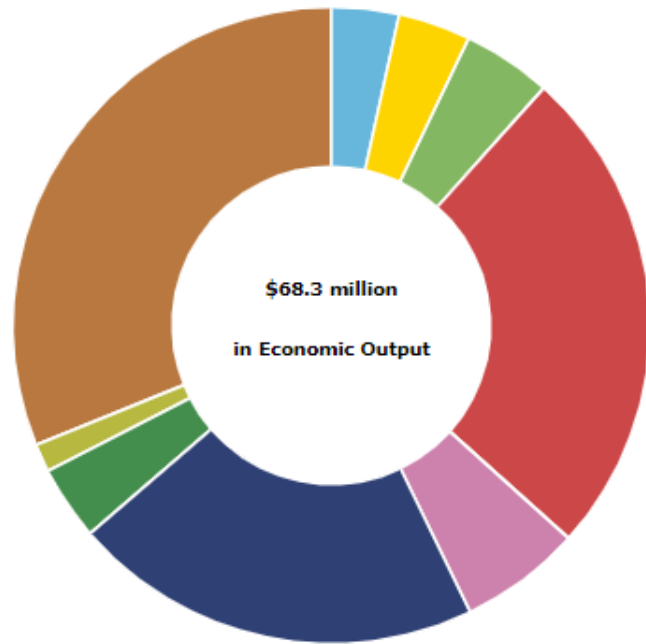


# Pictured Rocks National Lakeshore

In 2021, 1.3 million park visitors spent an estimated \$64.2 million in local gateway regions while visiting Pictured Rocks National Lakeshore. These expenditures supported a total of 773 jobs, \$21.1 million in labor income, \$36.8 million in value added, and \$68.3 million in economic output in local gateway economies surrounding Pictured Rocks National Lakeshore.

- Visitor Spending    Jobs    Labor Income    Value Added    Economic Output

Click on a Park for more information or select a Park



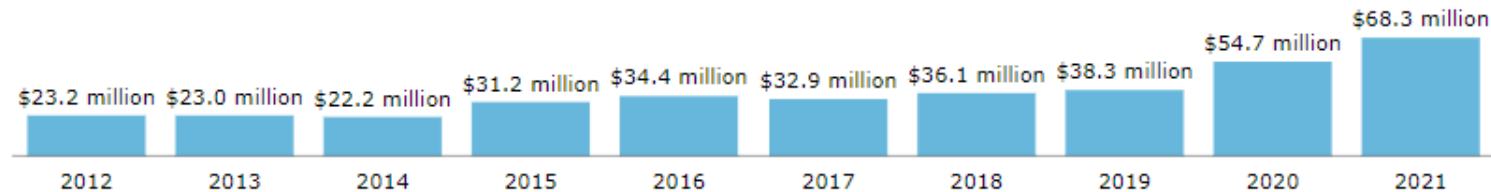
## Directly Affected Sectors

- Camping
- Gas
- Groceries
- Hotels
- Recreation Industries
- Restaurants
- Retail
- Transportation

## Secondary Effects

- Secondary Effects

## Total Economic Output Contributed to Pictured Rocks National Lakeshore Gateway Economies



# Regional News and Partner Updates

- ▶ Open Opportunities:
  - ▶ Renew America's Nonprofits - Energy Efficiency grant through DOE
    - ▶ <https://www.energy.gov/scep/renew-americas-nonprofits>
  - ▶ Rural and Tribal Assistance Program - Pre-development assistance for transformative rural transportation projects.
    - ▶ <https://www.transportation.gov/buildamerica/RuralandTribalGrants>
- ▶ Deadlines approaching:
  - ▶ DNR SPARK - June 26<sup>th</sup>
  - ▶ MEDC RAP 2.0 - June 30<sup>th</sup>
- ▶ Regional Housing Partnership
  - ▶ Steering meeting - June 26<sup>th</sup>
  - ▶ Action Plan development meeting - July 25<sup>th</sup> at the NMU Northern Center

Anything to share that's relevant to regional development? Let us know!

Thank you for attending.

**Next Meeting:** Thursday, August 24<sup>th</sup> in Escanaba.



### **Equity and Racial Justice**

Longstanding disparities in housing have compromised individual and family access to housing and generational wealth-building. To achieve the vision, housing opportunities must be equitable.



### **Older Adult Housing**

Housing for older adults (age 65 or older) is of special concern in Michigan due to the growth of its aging population.



### **Housing Ecosystem**

The housing ecosystem consists of components that interconnect across the priority areas of the plan. Attention to the housing ecosystem is foundational to the effectiveness of actions taken to improve housing in the state.



### **Rental Housing**

Rental housing is an important housing option for Michigan residents who cannot afford or are not interested in homeownership.



### **Housing Ecosystem**

The housing ecosystem consists of components that interconnect across the priority areas of the plan. Attention to the housing ecosystem is foundational to the effectiveness of actions taken to improve housing in the state.



### **Homeownership**

Homeownership is another key part of the housing continuum and presents opportunity for household financial benefit, generational wealth building, and community stability.



### **Housing Stock**

Michigan has a pressing need to develop, rehabilitate, and preserve housing across the state at price points for every level of income.



### **Communication and Education**

The plan includes a focus on inclusive communication and education, an essential complement to the other areas.

