



TILDEN TOWNSHIP

Recreation Plan 2025 - 2030



This page left blank

TABLE OF CONTENTS

Section 1	Introduction <i>A vision for parks and recreation in Tilden</i>
Section 2	Community Description <i>Description, demographics & data</i>
Section 3	Natural Environment <i>Landscape features</i>
Section 4	Administrative Structure
Section 5	Recreation Inventory
Section 6	Comments & Issues Scoping
Section 7	Values, Goals & Objectives
Section 8	Action Plan <i>Priority projects</i>

Section 1

Introduction to the Recreation Plan

Approximately every five years, communities across Michigan update their recreation plans to qualify for annual Michigan Department of Natural Resources (MDNR) grant funding programs, thereby enhancing their recreational opportunities. The MDNR defines the 5-year recreation plan format and requires that it includes the community's priority goals, objectives, and projects that can ideally be completed within the five years.

This document provides data on community demographics, natural resources, existing and recreational assets, operational management, and citizen input on the value of recreation. It also outlines the types of recreational facilities Tilden Township residents and public leaders want in their community, along with common goals, objectives, and strategies to achieve these aims. This 5-year document will also serve as a roadmap for future recreation endeavors by regularly identifying priority projects for Township officials, enabling them to plan accordingly.

The Planning Process

Ideally, a community's recreation plan is done in coordination with other plans within the community and the surrounding area. Doing so prevents the costs of duplicative recreation projects and enables greater coordination of recreation resources. Broader coordination of the recreation plan also raises awareness of the planning and development process among individuals, private sector businesses, non-profits, and community-based organizations that may wish to contribute resources toward Tilden Township's recreational goals.

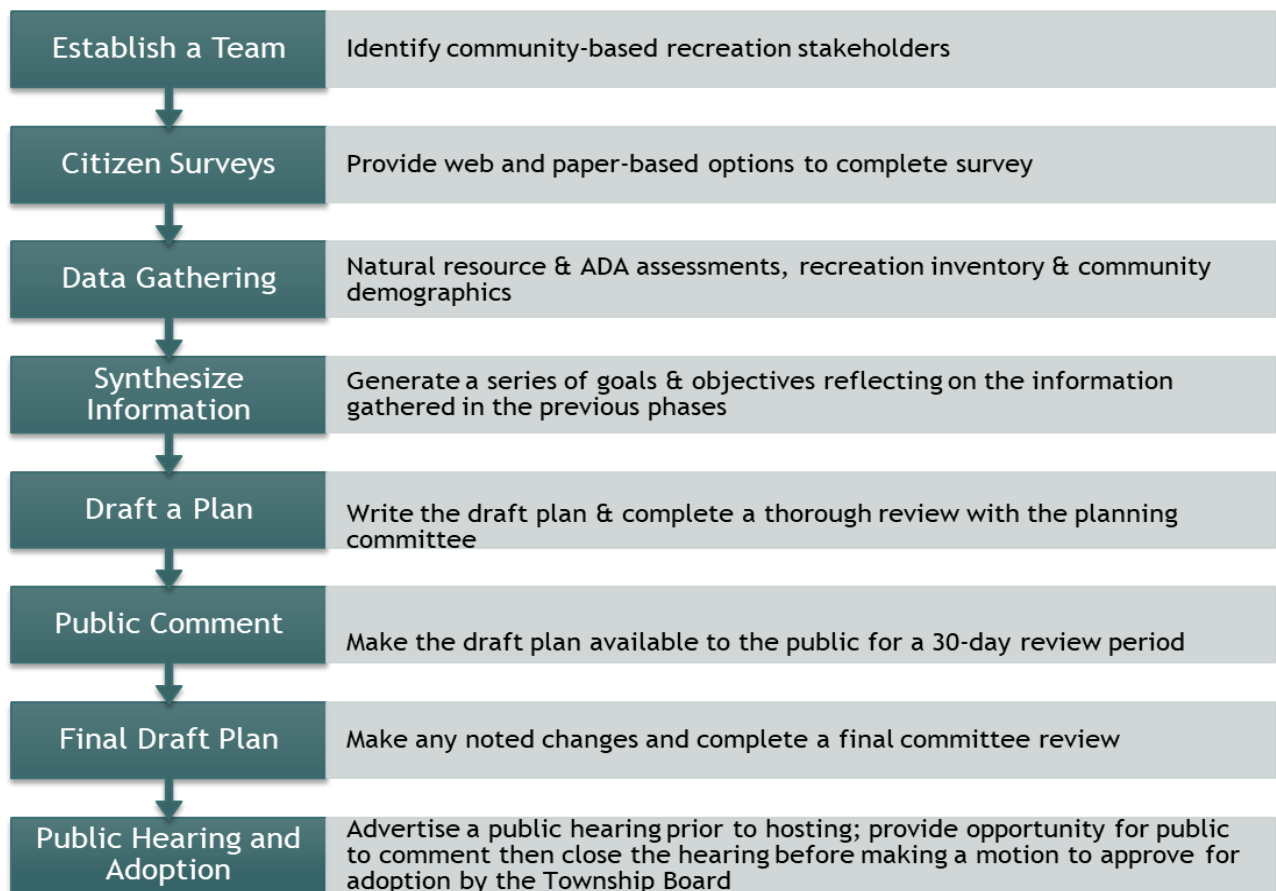
Plans reviewed during the development of the Tilden Township Recreation Plan 2025- 2030 include the following:

- The Marquette County Master Plan
- The Tilden Township Master Plan
- The Tilden Township Recreation Plan 2012 - 2016
- The Marquette County Recreation Plan
- The Ishpeming Township Recreation Plan (draft)
- The City of Ishpeming Recreation Plan

All plans above share common features, including a clear understanding among individual communities of the importance of offering local recreational resources to their residents. They recognize what types of recreation their residents prefer and actively seek support through grants, non-profit organizations, and local volunteers to enhance recreational opportunities.

Plan Development Steps

The development of a community park and recreation plan, often called a five-year recreation plan, involves several steps before it is considered complete and recorded with the Michigan DNR.



Section 2

Community Description

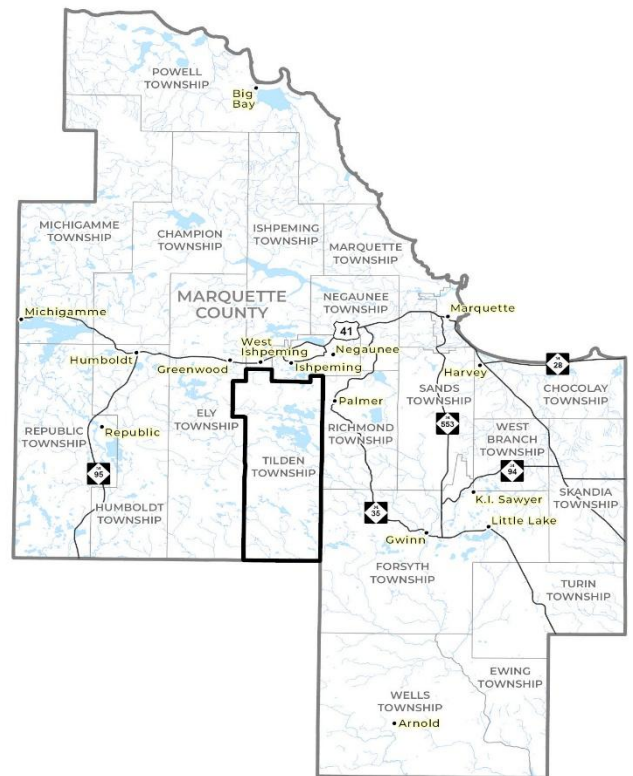
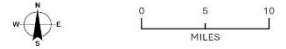
TILDEN TOWNSHIP

Tilden Township is a small rural civil township situated in the western part of Marquette County in Michigan's Upper Peninsula. According to the U.S. Census, Tilden Township had a population of approximately 1,045 in 2020 and an estimated 1,164 in 2023. The township spans about 95.90 square miles, with 89.80 square miles of land and 6.10 square miles of water. It is bordered by Ishpeming Township and the City of Ishpeming to the north, Richmond Township to the east, Forsyth Township and West Branch Township to the south, and Ely Township to the west. Tilden Township includes the unincorporated community of National Mine, located just south of the City of Ishpeming. Overall, it is a rural area with a population density of around 11.6 people per square mile. The median household income is comparable to most other townships in the area at \$63,000. The exception is Ishpeming Township with a much higher median household income of \$79,485.

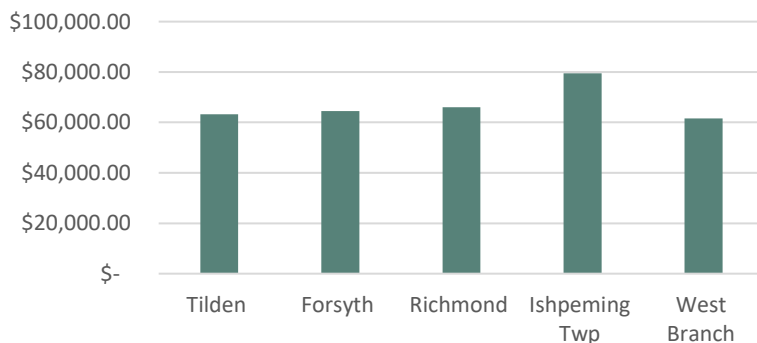
Tilden Township

Marquette County

-  Tilden Township
-  Marquette County
-  Township Boundary



Median Household Income



When Tilden Township was initially formed, it was part of Chippewa County in the eastern Upper Peninsula. The first recorded meeting for the township took place in April 1884, marking the beginning of its organization as a civil

township. At that time, there were only 143 voters, and the township was a much larger geographic area than it is today.

Tilden Township has a rich history of iron ore mining. Mining first began in the Township as part of the Marquette Iron Range shortly after iron ore was discovered in 1844. The current Tilden mine began open-pit operations in the early 1970s. Today, the Tilden Mine is the last active iron ore mine in the Upper Peninsula and is approximately 1,200 feet deep.

With the closure of the Republic mine in 1981 and the neighboring Empire mine in 2016, Tilden Township has experienced the direct and indirect effects of a natural-resource-based economy driven primarily by global markets.

Yet the residents of Tilden Township are proud, resilient, and resourceful. Township leaders recognize the importance of investing in their community, as shown by the high quality of their existing recreation facilities and their commitment to planning for additional recreational opportunities through the survey process and the development of a five -recreation plan.

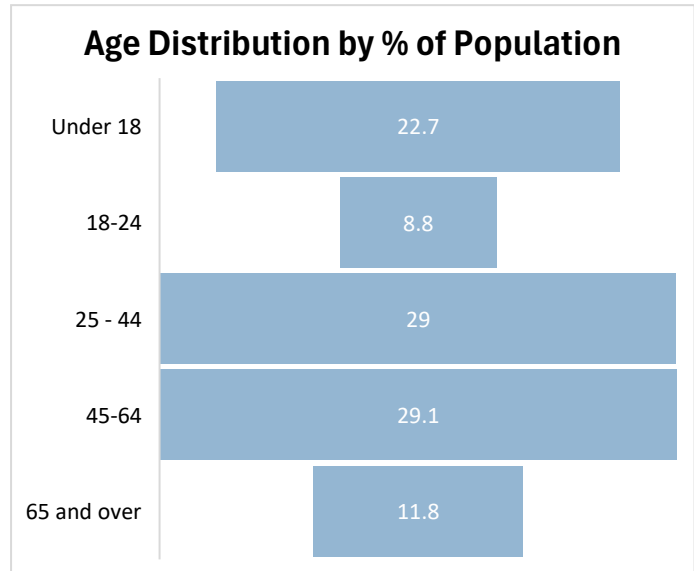
For Tilden Township, recreation is a natural transition to a more diversified economy, as the natural landforms in the Township offer opportunities to develop interesting trails of all types. The Township's leaders consistently work toward creating and improving recreational facilities for residents and visitors of all ages and abilities.



“...the township has the right geography to offer so many year-round activities, “

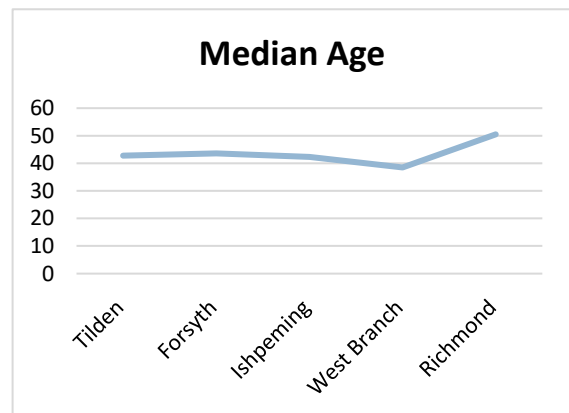
Resident of Tilden Township

Like all local government units in the Upper Peninsula, except for university towns, the population is aging. There is a significant number of individuals in specific age ranges, which has implications for the types of recreation facilities that a community should provide. In Tilden Township, we observe the following age distribution, expressed as a percentage of the population.



Compared to other rural townships in Marquette County, Tilden has a relatively good population distribution, with over 20% of the population under 18 years old and approximately 58% in the working-age group of 25 to 64 years. There is a lag in the number of 18-24-year-olds, but that is not uncommon in single-sector economies. If mining jobs are not available or desirable, 18- to 24-year-olds will likely move closer to other employment opportunities or pursue further education. Both are natural responses to that age demographic. As Tilden continues to make their Township a desirable place to live, they will return one day because Tilden Township will always be their home.

According to the U.S. Decennial Census of 2020, the median age in Tilden Township is approximately 43 years. This demographic trend is consistent across all townships in the western part of Marquette County. The exceptions are West Branch Township, which has a slightly lower median age of 38 years, and Richmond Township, which has a higher median age of 52 years.



Disability Demographics

It's no surprise that the prevalence of disabilities increases sharply with age, consistent with state and national trends where rates nearly double every twenty years. Around 14.5% of Tilden Township's population reported one or more disabilities in 2020, slightly above Michigan's statewide average of 13.8%. Below is a table that breaks down the types of disabilities in Tilden Township by age groups.

Disability by Age Group - Tilden Township (ACS 2023 5-year)

Age Group	Estimated Percentage with a Disability	Notes
Under 5 years	0%	Very small population sample—no disabilities reported.
5 to 17 years	2.6%	Represents children with cognitive, ambulatory, or independent living difficulties.
18 to 34 years	7.4%	Disability prevalence increases as working-age adults are included.
35 to 64 years	13.9%	Includes individuals with hearing, cognitive, or mobility impairments.
65 to 74 years	24.7%	Reflects age-related mobility, hearing, and vision impairments.
75 years and over	48.5%	Nearly half of the residents in this group report at least one disability.

These statistics have direct implications for recreation planning, as accessible design features are essential for residents with mobility and sensory challenges. Recreation facilities that incorporate universal design principles not only comply with ADA requirements but also create a more welcoming and inclusive environment for individuals of all abilities and ages. Strategic investments in accessible trails, clear signage, and barrier-free facilities will ensure that recreation opportunities are available to all Tilden Township residents.

Workforce

Tilden Township maintains a highly industrial-oriented workforce, with construction, extraction, and trades accounting for the largest share, followed by management and office-related occupations. The township’s total labor force participation rate is about 66% of residents aged 16 and over, consistent with other rural Upper Peninsula communities. Below is a table that shows the occupations of individuals in the workforce in Tilden Township. The table also displays the percentage of employees in each occupation and the estimated number of workers.

Workforce by Occupation (ACS 2023 5-year)

Occupation Category	Percent of Employed Labor Force	Approximate Workers
Management, business, science, and arts occupations	~26%	125
Service occupations	~15%	72
Sales and office occupations	~18%	86
Natural resources, construction, and maintenance occupations	~27%	130
Production, transportation, and material moving occupations	~14%	66



Section 3

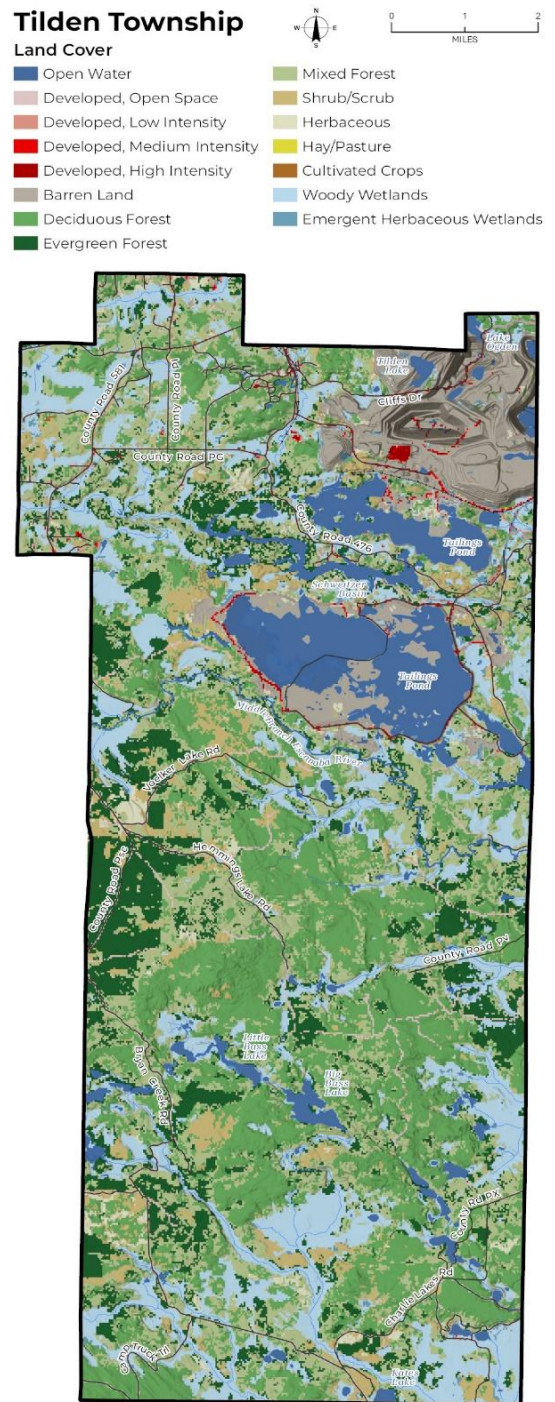
Natural Environment

Tilden Township boasts a rich and diverse natural environment that provides the foundation for numerous recreational opportunities and significantly contributes to the community's quality of life. This section examines the key natural features that inform recreation planning, including land cover, wildlife, geology, soils, topography, and hydrology.

Land Cover

Tilden Township's landscape features a diverse mosaic of natural and managed ecosystems, as illustrated in the Land Cover map for Tilden Township. Tilden Township features a landscape characterized by a distinctive mix of woody wetlands, deciduous forest, and evergreen forest, shrub and scrub, and barren land associated with mining.

The landscape typologies are described in greater detail on the next page and form the basis of Tilden Township's natural recreational resources.



Woody Wetlands



Woody wetlands, also known as forested wetlands or swamps, offer significant environmental, economic, and cultural value by supporting high biodiversity, filtering water, protecting shorelines, and providing recreational opportunities.

Deciduous Forest



Deciduous forests are defined by tree species that shed their leaves in autumn. In the Upper Peninsula, the typical species include sugar maple and beech, often mixed with eastern hemlock, white pine, yellow birch, and white cedar.

Evergreen Forest



Evergreen forests are also known as coniferous forests. These are some of the largest trees that have adapted to cold climates with long winters. They support a variety of wildlife, including the crossbill birds, which have a specialized beak for prying open pinecones to access the seeds. Common conifer species in the Upper Peninsula are white pine, spruce, and fir.

Shrub and Scrub



Shrub and shrub habitats are characterized by a mix of shrubs, small trees, and herbaceous plants, often forming dense, tangled thickets. Shrub and scrub areas can be wetlands or uplands that are located where there is no dominant tree canopy, making them a transitional zone between open fields and mature forests.

Barren Land



Barren land in Tilden Township involves significant landscape changes, resulting in large open pits, rock piles, and distinctive-colored tailings basins that appear barren from a natural perspective, but these areas significantly contribute to Michigan's economy and provide good-paying jobs.

Section 4

Administrative Structure

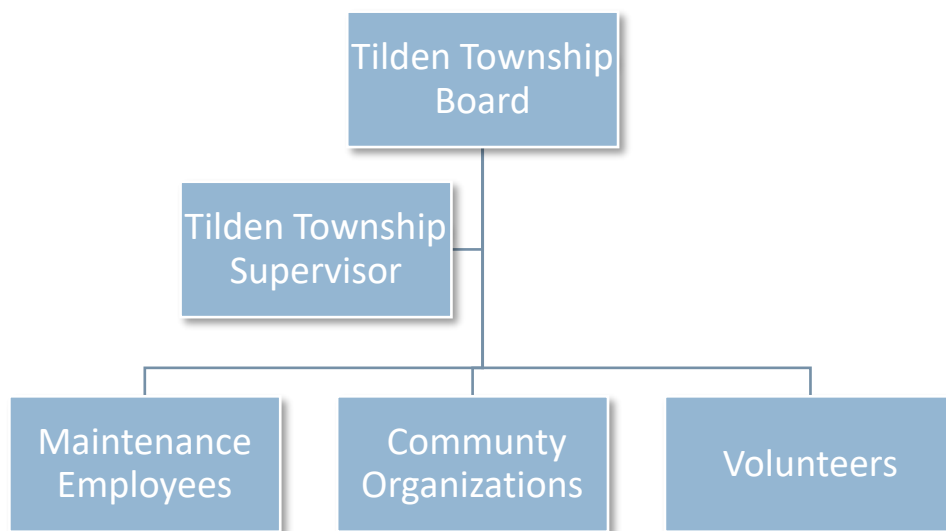
Recreation administration, planning, and development are the responsibilities of the Tilden Township Board. This five-member elected governing body regularly reviews its recreation plans to ensure they are implemented. The Township Board holds the authority to commit funds for parks and recreation, accept grants, purchase land, and make final decisions on recreation-related projects.

Budget Information

The Township allocates funds from its General Fund to support park maintenance and capital improvements for recreation facilities. The adjacent table is the amount of annual funds the Tilden Township Board has dedicated toward recreation in the past five years.

Year	Budget
2021	\$10,000
2022	\$10,000
2023	\$10,000
2024	\$10,000
2025	\$10,000

The organizational chart below visually represents the Townships' organization structure relating to recreation and demonstrates how departments and employees relate to one another.



Volunteer & Community Partnerships

Tilden Township is filled with community pride, especially around its school’s sports and academic successes, as well as the recreational facilities that bring the community together. Community organizations that are frequent contributors to assisting and enhancing the Township’s recreation facilities include the local Boy Scout troops and Eagle Scouts who have installed trail markers, benches, and veteran signs, and local softball teams who benefit from the Township’s recent softball field improvements and volunteer their time to help maintain it in appreciation of having the field available to them.

Tilden Township has been a member of the Iron Ore Heritage Trail since its inception. The NICE Community School District, along with Tilden Township and the Iron Ore Heritage Trail, is interested in developing a trail that connects Aspen Ridge Elementary/Middle School to the Iron Ore Heritage Trail. This project would provide an opportunity to integrate recreation, history, and culture into the school’s curriculum.

In addition to the support of volunteers and community groups, Cliffs Natural Resources, the operator of the Tilden Township mine, also partners with Tilden Township to enhance the quality of life in the township through contributions to recreation and other Township services and improvements.

Section 5

Recreation Inventory

The National Recreation Association (NRPA) standards are considered a guide to help develop specific criteria and a baseline for park development within local government boundaries. This includes evaluating the provision of one park for every 2,323 residents and ensuring there are 10.4 acres of parkland for every 1,000 residents. Due to its lower population density, Michigan’s Upper Peninsula in general tends to have a higher acreage of parkland per resident, and Tilden Township is no exception. The NRPA standards are acreage ratios that were developed for more urban and suburban communities. They include the following metrics.

<i>Park Type</i>	<i>Service Area (radius)</i>	<i>Size (Acres)</i>	<i>Acres/1,000 pop</i>	<i>Uses</i>
<i>Mini-Park</i>	<1/4 mi	1 or less	0.25 to 0.5	Specialized facilities serving a concentrated population

<i>Neighborhood Park</i>	1/4 to 1/2 mi	15+	1 to 2	Areas for intense recreation activities
<i>Community Park</i>	1 to 2 mi	25+	8 to 10	Areas for diverse recreation activities
<i>Regional Park</i>	1 hr. drive	200+	5 to 10	Large natural areas for outdoor recreation

Considering Tilden Township has a population of about 1045 according to the 2020 US Census, the table below demonstrates that Tilden Township exceeds the NRPA guidelines by approximately 25 acres.

Park	Park Type	Size (acres)	Acres/1000 pop per DNR	Acres/1000 pop Tilden Township
Tilden Recreation Complex	Community Park	6 acres	8 to 10	-4
Tilden Township Hall	Community Park	40 acres	8 to 10	+30
Emma's Park	Neighborhood Park	1 acre	1-2	1
Total Acres		47	22	+ 25

Park Accessibility Assessment

The Americans with Disabilities Act (ADA) requires all public facilities to be accessible to persons with disabilities. The Michigan Department of Natural Resources (MDNR) uses the following accessibility grading systems for parks and recreation facilities:

1. None of the facilities meet accessibility guidelines
2. Some facilities meet accessibility guidelines
3. Most facilities meet accessibility guidelines
4. The entire park meets accessibility guidelines
5. The entire park was developed using the principles of universal design

Each recreation facility in this inventory is assigned an accessibility rating based on the following scale. These ratings were determined through on-site evaluations and reflect current conditions at the time of assessment.

Township-owned Recreation Facilities

Tilden Township takes pride in the quality of its recreation facilities. Maintenance is routinely provided through the Township’s Public Works Department, and the Township continues to seek opportunities to upgrade and improve existing recreation facilities. The map on the following page shows the location of park facilities within Tilden Township.

“Tilden Township does a great job of maintaining its parks.”

...Tilden Township Resident

Tilden Township Recreation Facility Grant History

Tilden Township has leveraged DNR funding to support the development and maintenance of its recreation facilities since 1973 for a total amount of \$87,266.41. Below is a complete list of the grants that Tilden Township has received from the DNR:

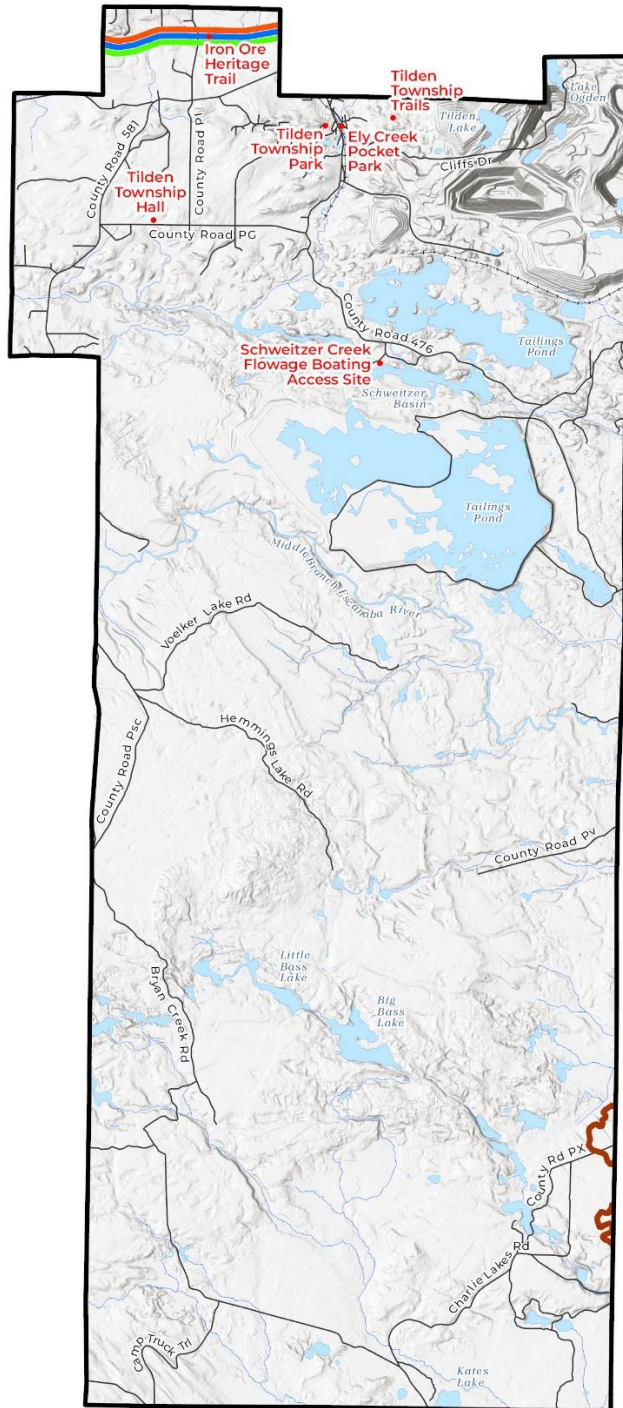
Project No.	Year	Project Title	Project Description	Grant Amount
26-00403	1973	Tilden Twp. Recreation Area	Developed 4 acres to include picnic area, ball field/ site improvements, parking, and playground improvements	\$2,916.41
BF98-005	1998	Tilden Township Play Area	Further development of the Township’s Community Center park with additional playground equipment	\$15,750.00
RP12-452	2012	Tilden Twp. Recreation Complex	Development included the construction of a new playground, improving accessibility	\$27,600.00
RP16-0102	2016	Tilden Township Hall Playground	Development project that renovated an existing playground. The proposed project included new accessible safety surfacing and benches for parents and caregivers, accessible walkways, and specially designed equipment.	\$41,000.00

Tilden Township



Trails

- Recreation Facilities
- Iron Ore Heritage Trail
- DNR Designated Motorcycle Trail
- DNR Designated Snowmobile Trail
- DNR Designated ORV Route



Tilden Township Recreation Complex

ADA Rating: 3 out of 5



The Tilden Township Recreation Complex is a Community Park located in National Mine (Section 21 T47N-R27W).



The six-acre site features two tennis courts, a baseball field used for girls' softball, Little League, and fast pitch, three separate horseshoe courts utilized by a men's and women's league, playground equipment, a basketball court, a lighted ice rink, a volleyball court, a pavilion, a concession station, and restrooms. The six-acre site is used frequently by Township residents and various baseball, softball, and horseshoe leagues. Physical education students from Westwood High School also use the ball fields. The tennis courts were resurfaced in 2007 and are scheduled to be resurfaced in 2026, with new pickleball markings. The Township would like to encourage additional teams to use the available ballfields.

Tilden Township Hall & Community Center

ADA Rating: 4 out of 5



The



Tilden Township Hall is located at 3145 County Road Pg. The Township Hall is located on 40 acres. The site features a well-maintained Community Park with an ADA rating of 4. ADA parking is well-marked with signage and designated parking lines in a paved lot. It is adjacent to a level grade accessible pathway that leads to the playground. The playground equipment is new and well-designed for children of all abilities.

The Township has developed a non-motorized trail that loops through the forest behind the Township Hall for about 1.5 miles. The Township Board plans to enhance development of the non-motorized trail by adding lighting and signage, while maintaining a well-groomed cross-country skiing trail for year-round use.



“...I love the new ski trails and playground at the County Rd PG location”
Tilden Township Resident

Emma's Park (Ely Creek Pocket Park)

ADA Rating: 2 out of 5

Emma's Park is a mini park located next to a Tilden Township Maintenance building. The address is 150 County Road PCE. The original name of the park was Ely Creek Pocket Park, but after it was developed, it became frequented by a neighborhood girl named Emma, so it came to be fondly known as Emma's Park.

In 2010, the township purchased a parcel at the county's foreclosure sale. The land is located next to Ely Creek in National Mine and includes a dilapidated log cabin. The log cabin was demolished, and the parcel has been converted to a pocket park for township residents to enjoy. Picnic tables, a grill, and a basketball court were added to the lot in 2011.



Trail Networks

ORV Trails

Tilden Township offers a variety of well-developed trails for both motorized and non-motorized activities. These trails provide access for hunting, fishing, walking, hiking, skiing, and off-road recreational riding with snowmobiles and off-road vehicles (ORVs). Additionally, ORVs are permitted on all county roads within Tilden Township, as well as on state forest roads, unless

specifically marked as closed. This makes it easier to access the backcountry from private property.



C Route -- Negaunee, Ishpeming, Tilden & Ely Townships Marquette County, Michigan

Description: 46.3 Miles, Negaunee - Michigamme Twp

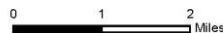
Advisory: Trails and Routes have two-way traffic.
Disclaimer: Trails shown on this map are an approximate representation of the trail system at the time of publication and may not reflect current ground conditions.
Stay on signed trails only!



- P** Parking lot
- 65" Restricted ORV Route
- Restricted ORV Route - ORV's Less than 65"
- ORV route - ORV's of all sizes including off-road motorcycles. ORV license and trail permit required unless licensed by the Secretary of State.
- Highway
- Paved road
- Gravel or dirt road
- Lakes and rivers
- State forest land
- City or village
- Township
- County boundary



Updated: 03/27/2024



Above is a map showing the C-Route, which is 46.4 miles long from Negaunee to Ishpeming and Tilden Township. The DNR C-Route, is a major segment of Michigan's extensive ORV trail system, primarily featuring dirt/gravel roads and trails (like those near Gwinn, Cascade, and Little Lake) that allow ATVs, UTVs (under 65" wide), and motorcycles for scenic off-road adventure through state forests, connecting to other routes and attractions like Laughing Whitefish Falls and Sugarloaf Mountain, requiring licenses and permits for use.

Snowmobile Trails

C-Route is also part of the state's extensive snowmobile route across the Upper Peninsula during the winter months. The map below shows the Michigan DNR snowmobile trails across Marquette County. The ORV C-Route becomes Trail # 82.

Michigan Department of Natural Resources
Snowmobile Trails
 Marquette County



Updated: 11/27/2024



0 12 Miles

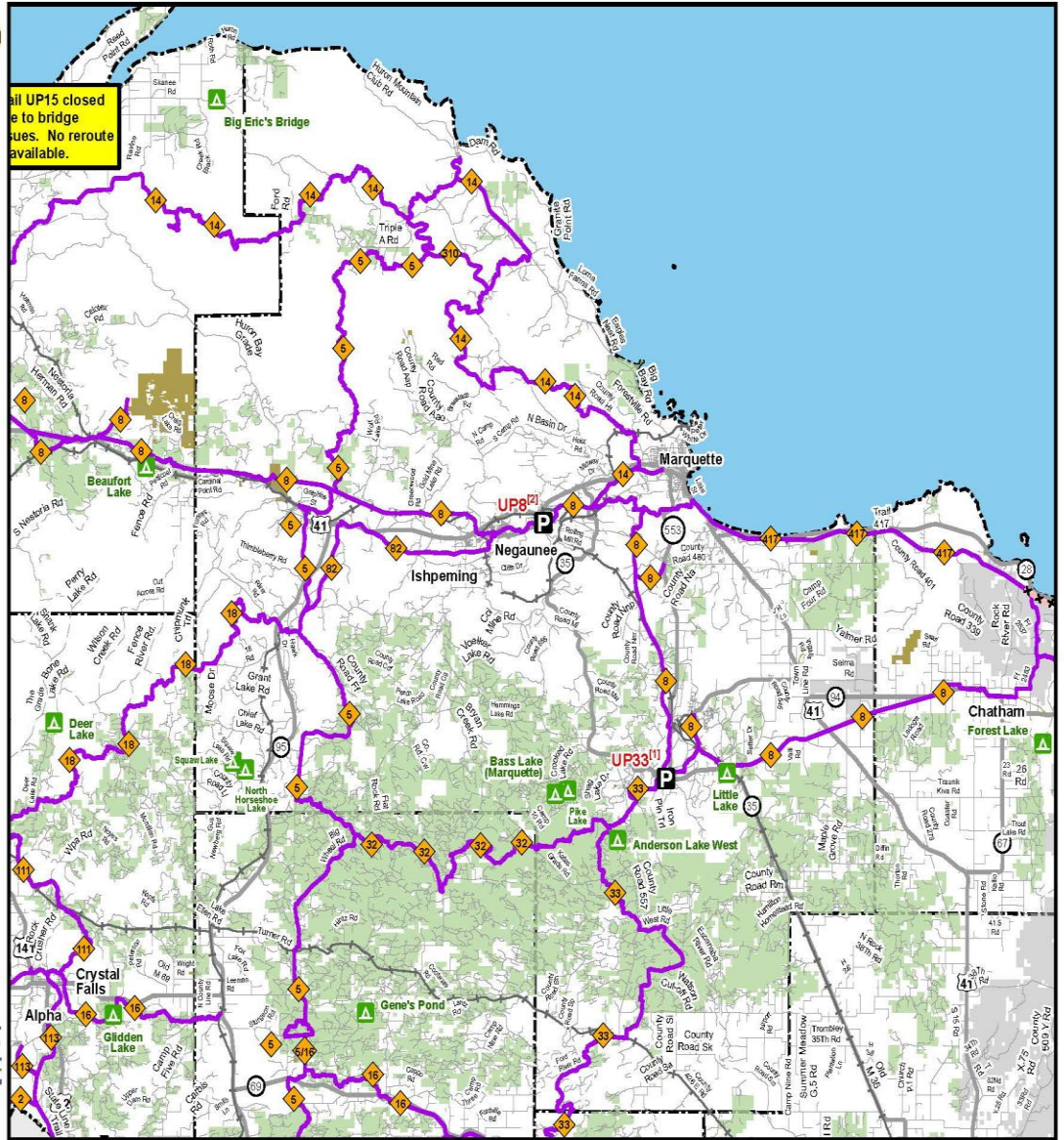
- Parking lot
- State forest campground
- Temporarily closed trail
- Snowmobile trail
- Highway
- Paved road
- Gravel or dirt road
- Railroad
- State forest land
- State park
- Federal land

Parking
 UP33¹¹ Parking off of M-35 in Gwinn just west of intersection with M-553
 UP8²¹ East of Silver St, South Side of Rail St



RIDE
 of
RIGHT

Michigan.gov/Snowmobiling



The Iron Ore Heritage Trail

The Iron Ore Heritage Trail follows the same route through Tilden Township as the DNR ORV and DNR Snowmobile Route. The map below illustrates how these three trail systems interconnect in Tilden Township. While the Iron Ore Heritage Trail does not have a designated trailhead in Tilden Township, the trailheads at the Cliff Shaft Mine are conveniently located nearby.

Tilden Township has been a participating member of the Iron Ore Heritage Trail since its inception, as the heritage trail highlights the history of iron ore mining in Marquette County. Tilden Township plays a significant role in both the history and future of iron ore mining in Marquette County and the state of Michigan.

Mountain Biking

Negaunee and Ishpeming offer incredible mountain biking. The Range Area Mountain Biking Association (RAMBA) is a Bronze Level International Mountain Biking Association (IMBA) that has developed over 80 miles of meticulously crafted trails across the Iron Range, where there are remnants of the west-end of Marquette County's mining history.

Section 6

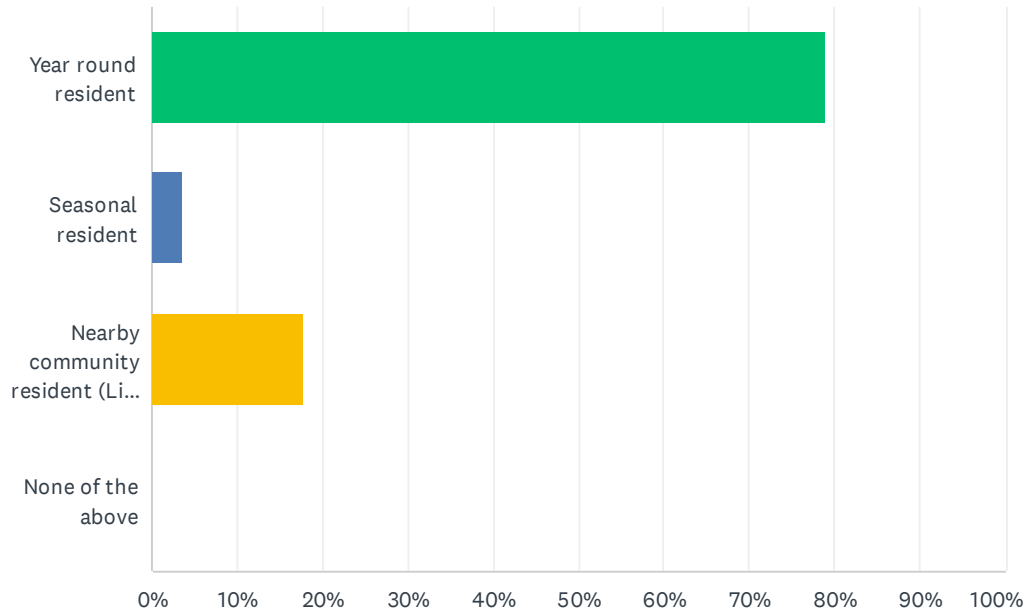
Community Input

A community survey was conducted at the beginning of the planning process. The survey was announced as being available to residents through social media and paper copies were made available at the Township Hall. The survey was available from September 8, 2025 to November 24, 2025.

Eighty-five surveys were completed and processed; however, not all respondents answered every question. The input received is shown below and helped define the township's priorities for future parks and recreation endeavors.

Q1 Please select what best describes your residency:

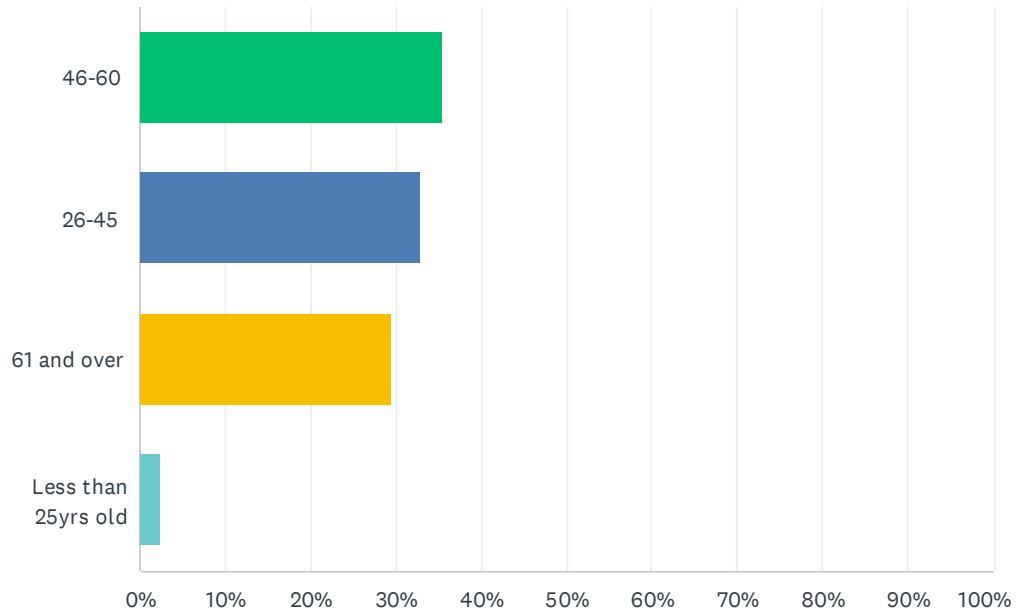
Answered: 85 Skipped: 0



ANSWER CHOICES	RESPONSES	
Year round resident	78.82%	67
Seasonal resident	3.53%	3
Nearby community resident (Live outside township limits)	17.65%	15
None of the above	0.00%	0
TOTAL		85

Q2 Are you:

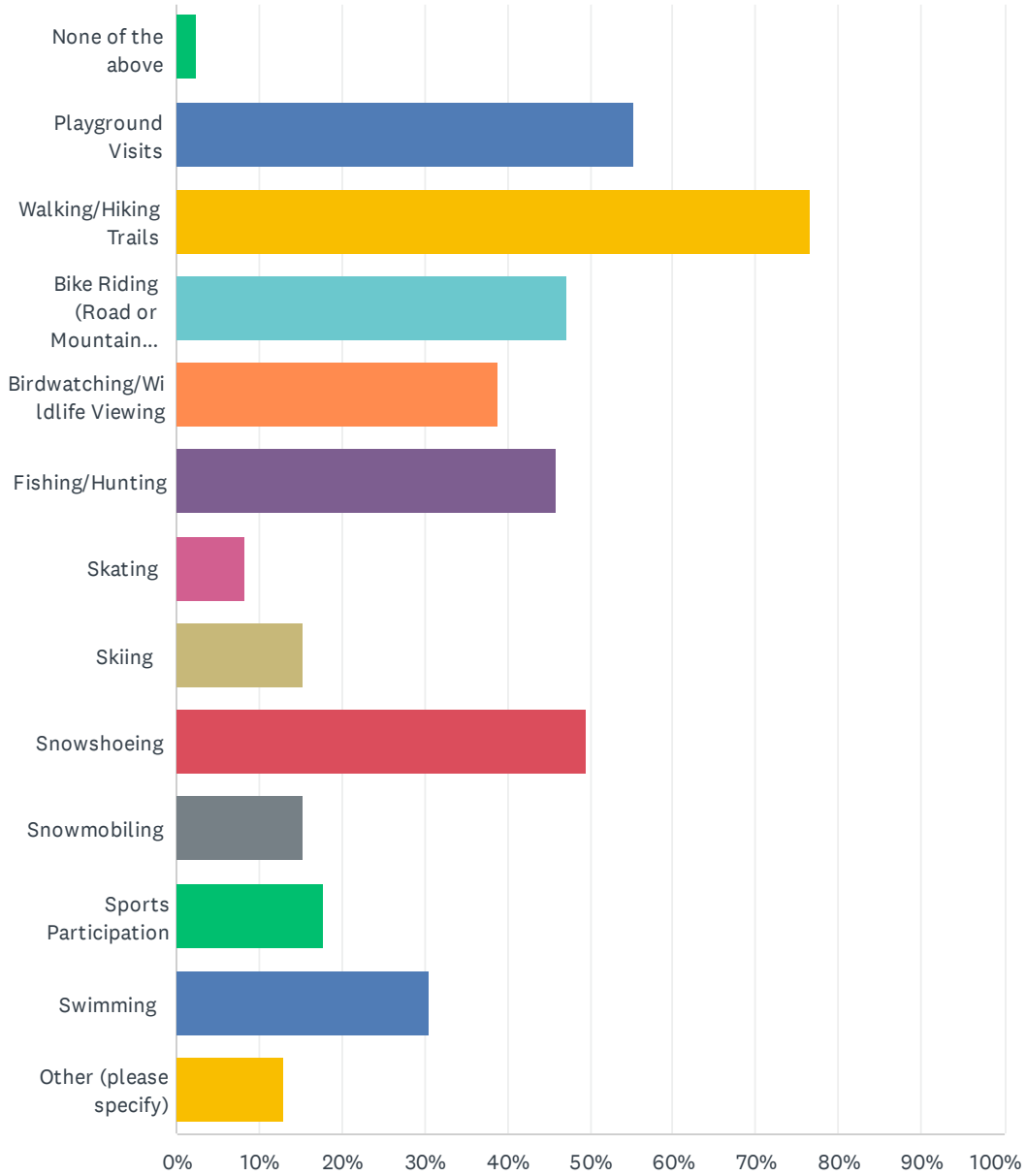
Answered: 85 Skipped: 0



ANSWER CHOICES	RESPONSES	
46-60	35.29%	30
26-45	32.94%	28
61 and over	29.41%	25
Less than 25yrs old	2.35%	2
TOTAL		85

Q3 In the past two years, what recreational activities have you or a member of your household participated in? (choose all that apply)

Answered: 85 Skipped: 0



Tilden Township Recreation Survey

ANSWER CHOICES	RESPONSES	
None of the above	2.35%	2
Playground Visits	55.29%	47
Walking/Hiking Trails	76.47%	65
Bike Riding (Road or Mountain Biking)	47.06%	40
Birdwatching/Wildlife Viewing	38.82%	33
Fishing/Hunting	45.88%	39
Skating	8.24%	7
Skiing	15.29%	13
Snowshoeing	49.41%	42
Snowmobiling	15.29%	13
Sports Participation	17.65%	15
Swimming	30.59%	26
Other (please specify)	12.94%	11
Total Respondents: 85		

Q4 What do you think of when someone mentions recreation in Tilden Township?

Answered: 78 Skipped: 7



Q5 What do you VALUE about Tilden Township's recreation opportunities?

Answered: 75 Skipped: 10



Q6 What would you like to STAY THE SAME about Tilden Township's recreation opportunities?

Answered: 72 Skipped: 13



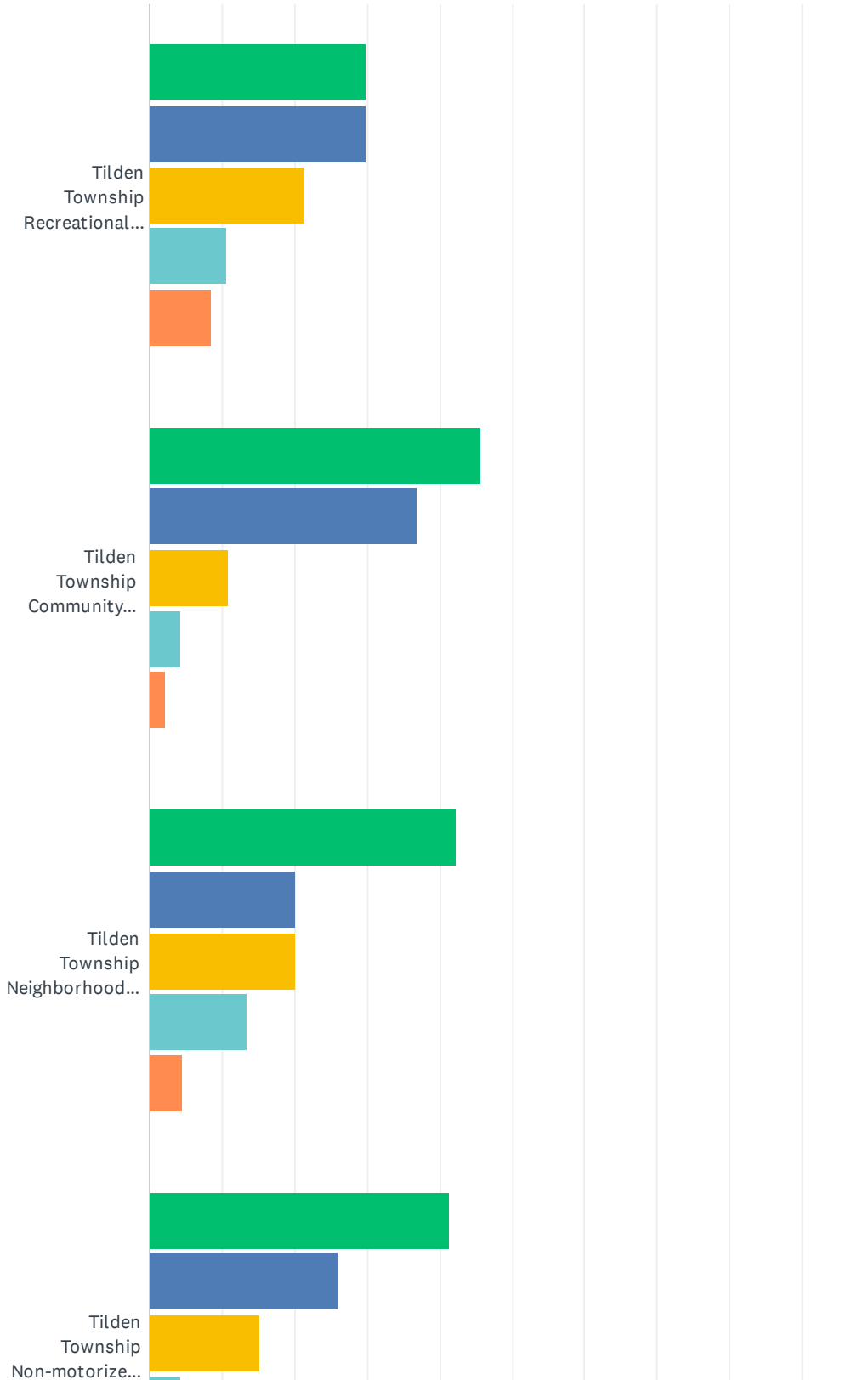
Q7 What would you like to CHANGE about Tilden Township's recreation opportunities?

Answered: 69 Skipped: 16

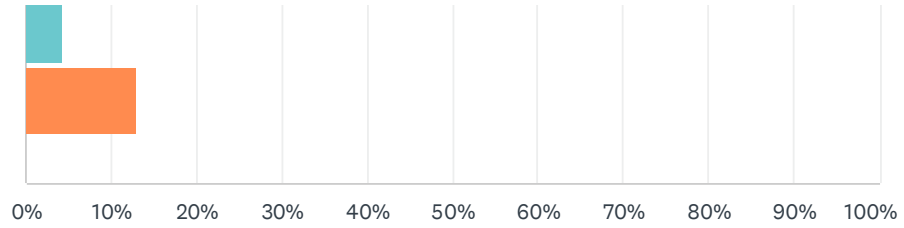
skiing areas need township road maintenance Better often hiking access trails walking trails
Nothing keep opportunities walk grooming lighting bike park Add

Q8 In the past year, how often have you or a member of your household visited the following recreation areas in Tilden Township?

Answered: 47 Skipped: 38



Tilden Township Recreation Survey

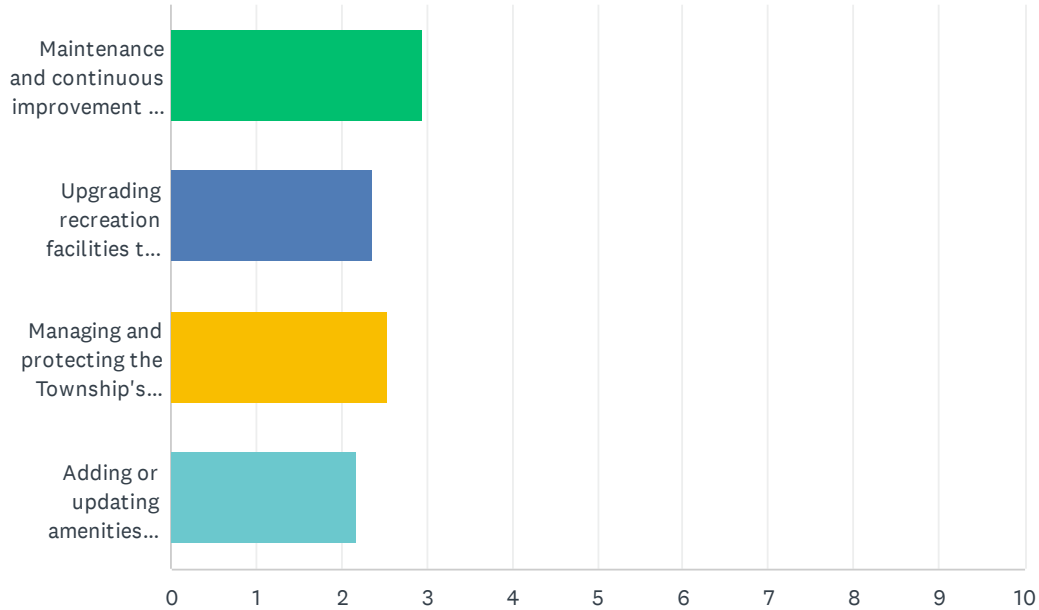


■ Never
 ■ 1-2 per year
 ■ 3-6 per year
 ■ Monthly
■ Weekly or ...

	NEVER	1-2 PER YEAR	3-6 PER YEAR	MONTHLY	WEEKLY OR MORE	TOTAL
Tilden Township Recreational Complex	29.79% 14	29.79% 14	21.28% 10	10.64% 5	8.51% 4	47
Tilden Township Community Center	45.65% 21	36.96% 17	10.87% 5	4.35% 2	2.17% 1	46
Tilden Township Neighborhood Park	42.22% 19	20.00% 9	20.00% 9	13.33% 6	4.44% 2	45
Tilden Township Non-motorized Trail	41.30% 19	26.09% 12	15.22% 7	4.35% 2	13.04% 6	46

Q9 What should be a priority when addressing Tilden Township's Recreation Plan? (1: Highest priority, 2: Moderate Priority, 3: Lowest Priority)

Answered: 83 Skipped: 2



	1	2	3	4	TOTAL	SCORE
Maintenance and continuous improvement of facilities and parks	38.55% 32	26.51% 22	25.30% 21	9.64% 8	83	2.94
Upgrading recreation facilities to be accessible and inclusive to all individuals	16.87% 14	28.92% 24	27.71% 23	26.51% 22	83	2.36
Managing and protecting the Township's natural assets for access and enjoyment by the public	28.92% 24	19.28% 16	27.71% 23	24.10% 20	83	2.53
Adding or updating amenities (lighting, water sources, picnic facilities, etc.)	15.66% 13	25.30% 21	19.28% 16	39.76% 33	83	2.17

Survey Results and Key Findings

The survey results revealed several important insights that have direct implications for recreation planning.

- **Park Usage:** Residents of Tilden Township who enjoy recreational opportunities visit all of the Township's recreation sites regularly for multiple reasons.
- **Multi-Generational Needs:** The diverse age demographics of respondents highlight the importance of creating inclusive recreation spaces that serve all residents, from families with young children to seniors.
- **Walking and Hiking Trails:** Walking and hiking trails were the favorite recreational activity among survey respondents. Snowshoeing and skiing are also identified as being recreational favorites and directly relate to trail use and the Townships' desire to improve non-motorized trails for all-season use.
- **Nature and Wildlife:** Quiet, beautiful woodland settings and wildlife viewing are valued by the residents of Tilden Township.
- **Playgrounds:** Survey respondents love their local parks in Tilden Township. It can be seen that the Township takes pride in the development and maintenance of its parks and recreation features, and the community appreciates it.

These findings have directly informed the goals, objectives, and action plan presented in subsequent sections of this recreation Plan.

Section 7

Based on community input, demographic analysis, and an assessment of existing recreation resources, Tilden Township has identified three primary goals to guide recreation development over the next five years. These goals reflect community priorities expressed through the public survey process and address identified facility needs.

GOAL 1: Continue to develop and enhance the non-motorized trail at the Tilden Township Community Center.

Primary Objective: Transform the non-motorized trail into a high-quality, well-lit, and well-maintained cross-country ski trail during the winter months, and into a beautifully wooded

trail system that gently slopes and winds through the dense forest during the spring, summer and fall.

OBJECTIVES:

1. Grade and smooth the trail to allow greater access for mobility devices.
2. Install lighting so the trail can be used during the winter months.
3. Install signage at the trailhead and along the trail to give users confidence that they are not going to get lost.
4. Provide seating areas and a smokeless fire pit at the trail head and ski racks so skiers can gather and socialize before or after their ski.

GOAL 2: Continue to improve and maintain our existing recreation facilities.

OBJECTIVES:

1. Inspect and document all components of each recreation facility for wear and tear.
2. Maintain a list of capital improvements that need to occur annually.
3. Maintain a list of capital improvements that need to occur within the next five years.
4. Continue to develop five-year recreation plans that provide guidance for future recreational development needs in the community.

GOAL 3: Honor the community's connection to nature by incorporating natural elements and educational opportunities into recreation facilities.

OBJECTIVES:

- Create gardens featuring native plants
- Install educational signage about the local ecology
- Provide opportunities for environmental education
- Develop walking trails linking to adjacent natural areas
- Create opportunities for wildlife viewing
- Use natural materials for pathway construction to protect habitat

Section 8

Action Plan

The Action Plan was developed for the Township's future recreation facility development and programming based on the stated goals and objectives. The chart below is not considered a comprehensive list of recreation projects as circumstances are constantly evolving. The Township should revisit its recreation plan and, as needed, amend its recreation priorities.

Year	Facility	Improvements	Est. Costs	Funding Source	Responsible Agency
2026	Non-motorized Trail	Enhance amenities to include lighting, signage, and areas for trail users to gather, relax and socialize	\$200,000	DNR Recreation Passport Grant and General Fund	Planning Commission Tilden Township Board
2027	Tilden Township Recreation Complex	Resurface basketball court, add pickleball to current tennis courts. Address parking accessibility options	\$150,000	DNR Recreation Passport Grant and General Fund	Planning Commission Tilden Township Board
2028	Tilden Township Hall Recreation Center	Seek plans and cost estimates for improvements to the playground and update accessibility parking area and pathway	\$5,000	General Fund	Planning Commission Tilden Township Board
2029	Tilden Township Recreation Complex	Develop plans and estimates for improved accessible access up the hill to the parking area	\$5,000	General Fund	Planning Commission Tilden Township Board
2030	Tilden Township Recreation Complex	Implementation of accessible access to the parking area	\$200,000	DNR NRTF Grant and General Fund	Planning Commission Tilden Township Board
2030	Township Hall Community Park	Develop plans and specifications for improvements	\$15,000	General Fund	Planning Commission Tilden Township Board